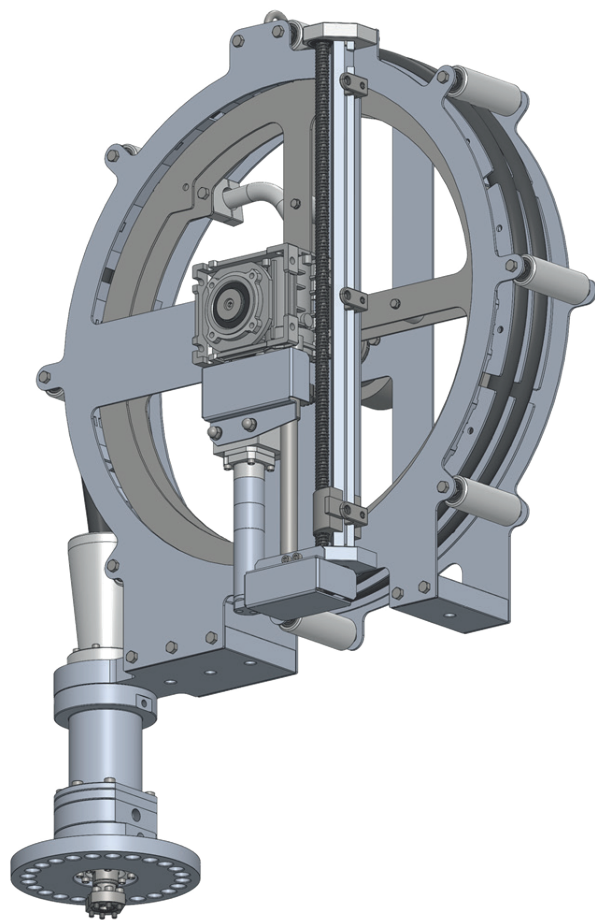


# CLEANING SYSTEMS FOR INDUSTRIAL TANKS



## COMPANY PROFILE

**BOLONDI CLEANING HEADS** launched its activities in 1980 with the production of cleaning heads. Today it offers the market a comprehensive range of products for cleaning and sanitising from small containers to large areas at low, medium and high pressure. All products from the BOLONDI CLEANING HEADS range are designed for industrial applications in the food, pharmaceutical, chemical, winemaking and municipal cleaning sectors.

In addition to continuous research and development, the key to success is the ability to manage every order, from design to delivery, always with the needs of the client in mind. Thanks to the continuous investments in research and development, and the strong focus on exporting, the company now has clients in more than 60 countries around the world.



The meticulous construction of each individual cleaning head, as well as the careful integration into industrial installations and machinery, makes every product in the range a guarantee of quality. Particular attention is given to the finishing of each and every component which, together with innovative design, makes it possible to produce truly technologically advanced masterpieces in every respect.

Enthusiasm, a passion for excellence, innovation, and the empowerment and professional growth of people are the main values that inspire us and guide us every day in what we do.

## ROTATING CLEANING HEADS WITH FRONT SPRAY/SECTOR CLEANING

P.4

- PW SERIES
- SW SERIES ▶ Max. 200 bar
- XC070E-PT

## LOW-PRESSURE ROTATING HEADS FOR INTERNAL CLEANING

P.14

- RT SERIES ▶ Max. 10 bar
- XM SERIES

## ROTATING HEADS FOR INTERNAL CLEANING

P.20

- IB200 ▶ Max. 200 bar
- FW ▶ Max. 400 bar
- MW SERIES ▶ Max. 500 bar
- RW SERIES
- XB SERIES ▶ Max. 200 bar
- XC SERIES

## ROTATING CLEANING HEADS WITH LINEAR MOVEMENT

P.32

- RT SERIES
- TA SERIES
- XT SERIES

## ROTATING CLEANING HEADS WITH ROTARY MOVEMENT

P.44

- TA0500-TA0600 SERIES

## ACCESSORIES

P.46

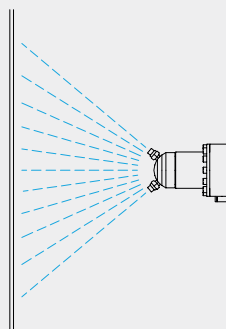


*Acquamotor (water-driven)*

**PW049-AAB** self-rotating cleaning head with flow-rate priority and lateral discharge.  
Nozzle holder: 6 different cleaning angles.

### APPLICATIONS

- Car washes



**PW049-AAB**

### TECHNICAL SPECIFICATIONS

FLOW RATE 15 - 30 l/min

MAX PRESSURE 150 bar

MAX TEMPERATURE 90 °C

WATER INLET 3/8" G

NOZZLES 1/8" NPT

MATERIALS

Gaskets: NBR

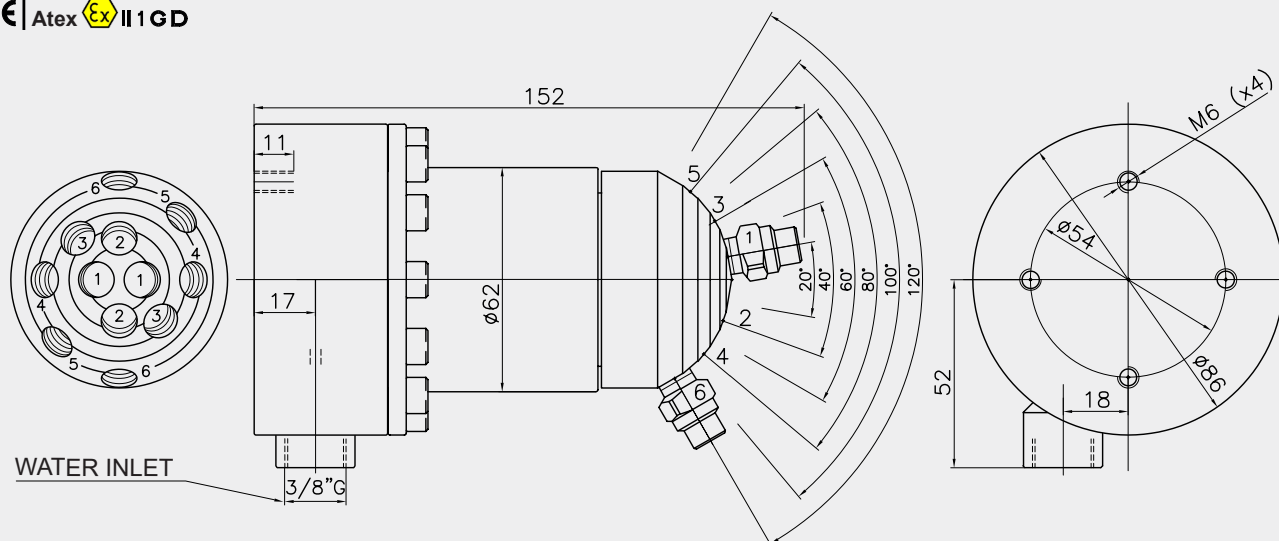
AISI 316 - ALUMINIUM

INLET HOLE -

ROTATION SPEED 100-200 rpm

WEIGHT 3 kg

CE | Atex  II 1 GD

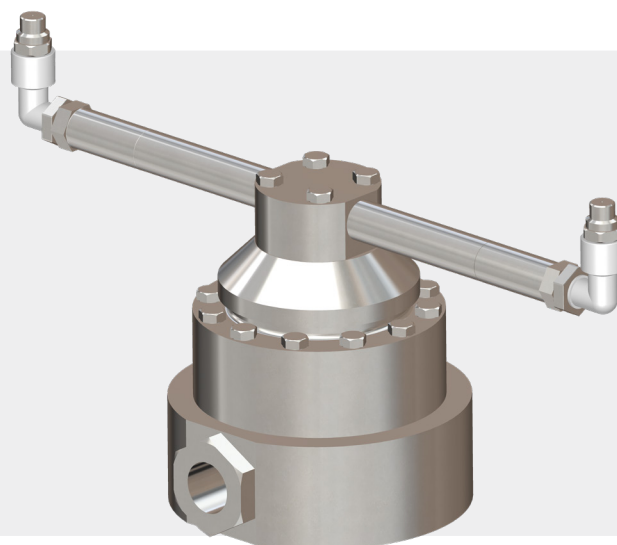


### Acquamotor (water-driven)

**PW060-LC** self-rotating cleaning head with flow-rate priority and lateral discharge. It can operate at high or low rotation speed and can wash using 2, 3 or 4 spray arms of various lengths and curves at different angles, as per customer requirements.

#### APPLICATIONS

- Front-facing cleaning
- Car washes
- Train wash systems
- Construction vehicle cleaning
- Conveyor belt cleaning

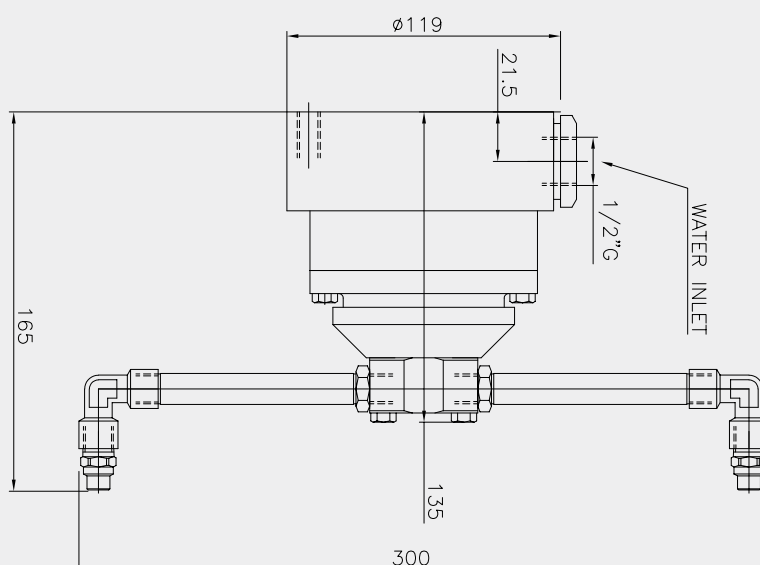


**PW060-LC**

#### TECHNICAL SPECIFICATIONS

FLOW RATE	8 - 60 l/min
MAX PRESSURE	200 bar
MAX TEMPERATURE	90 °C
WATER INLET	1/2"
NOZZLES	1/4" NPT
MATERIALS	Gaskets: NBR - EPDM - VITON AISI 316 - ALUMINIUM
INLET HOLE	Variable depending on the spray arm configuration
ROTATION SPEED	20-120 rpm
WEIGHT	3 kg

CE | Atex  II 1 GD

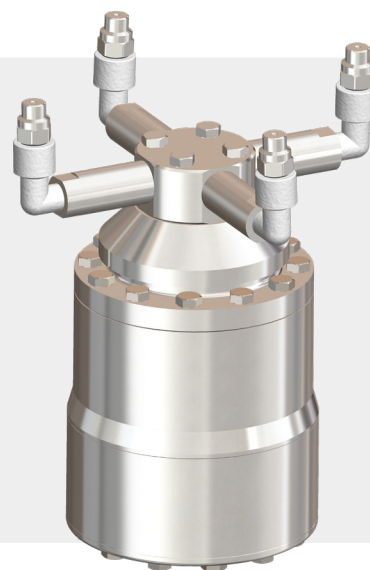


### Acquamotor (water-driven)

**PW060-SL\_CF/SF** self-rotating cleaning head with flow-rate priority with or without coaxial discharge filter. Has low rotation speed features and can operate using 2, 3 or 4 spray arms of various lengths and curves at different angles, as per customer requirements.

### APPLICATIONS

- Front-facing cleaning
- Car washes
- Train wash systems
- Construction vehicle cleaning
- Conveyor belt cleaning

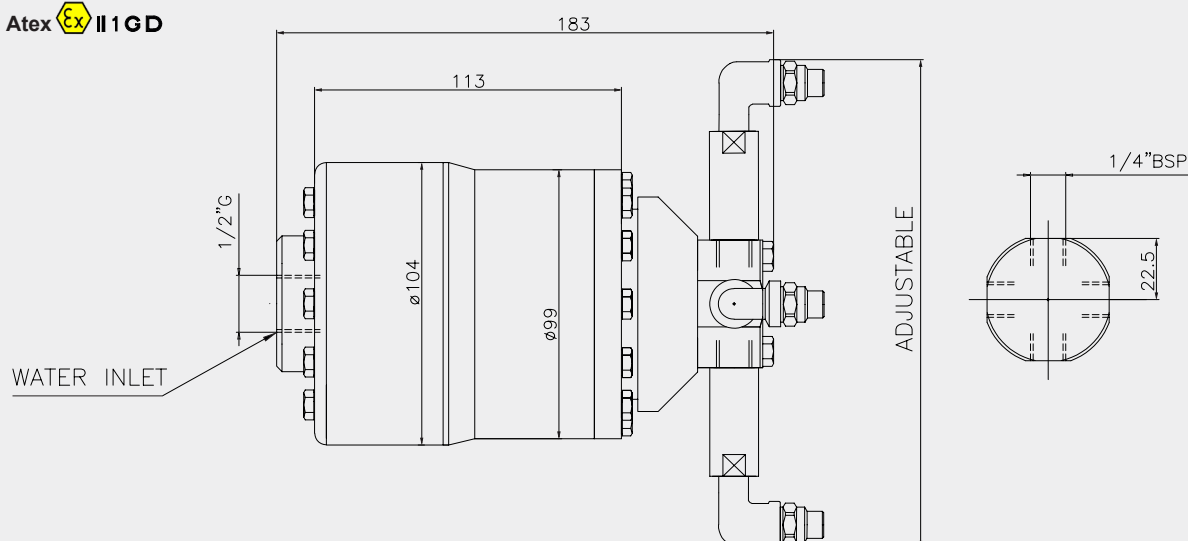


**PW060-SL\_SF**

### TECHNICAL SPECIFICATIONS

FLOW RATE	8 - 60 l/min
MAX PRESSURE	200 bar
MAX TEMPERATURE	90 °C
FILTER	700 micron
NOZZLES	1/4" NPT
MATERIALS	Gaskets: NBR - EPDM - VITON AISI 316
INLET HOLE	Variable depending on the spray arm configuration
ROTATION SPEED	5-16 rpm
WEIGHT	7.1 kg

CE | Atex Ex II 1 GD



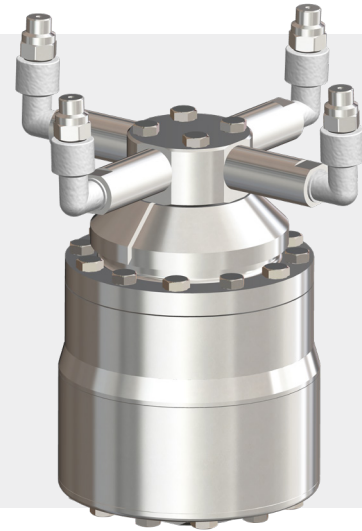


## Acquamotor (water-driven)

**PW060-SP\_CF/SF** self-rotating cleaning head with flow-rate priority with or without coaxial discharge filter. Has high rotation speed features and can operate using 2, 3 or 4 spray arms of various lengths and curves at different angles, as per customer requirements.

### APPLICATIONS

- Front-facing cleaning
- Car washes
- Train wash systems
- Construction vehicle cleaning
- Conveyor belt cleaning

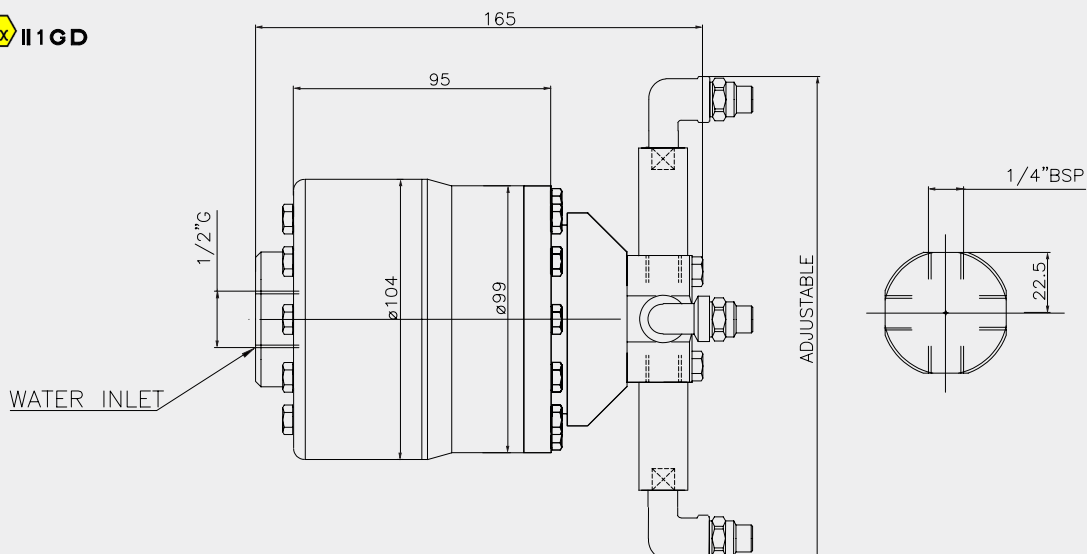


**PW060-SP\_SF**

### TECHNICAL SPECIFICATIONS

FLOW RATE	8 - 60 l/min
MAX PRESSURE	200 bar
MAX TEMPERATURE	90 °C
FILTER	700 micron
NOZZLES	1/4" NPT
MATERIALS	Gaskets: NBR - EPDM - VITON AISI 316
INLET HOLE	Variable depending on the spray arm configuration
ROTATION SPEED	30-100 rpm
WEIGHT	7.1 kg

CE | Atex II 1 GD



### Acquamotor (water-driven)

**PW200-SL/SP\_CF** self-rotating cleaning head with flow-rate priority, filter and coaxial discharge. Has low rotation speed features and can operate using 2, 3 or 4 spray arms of various lengths and curves at different angles, as per customer requirements.

#### APPLICATIONS

- Front-facing cleaning
- Car washes
- Train wash systems
- Construction vehicle cleaning
- Conveyor belt cleaning

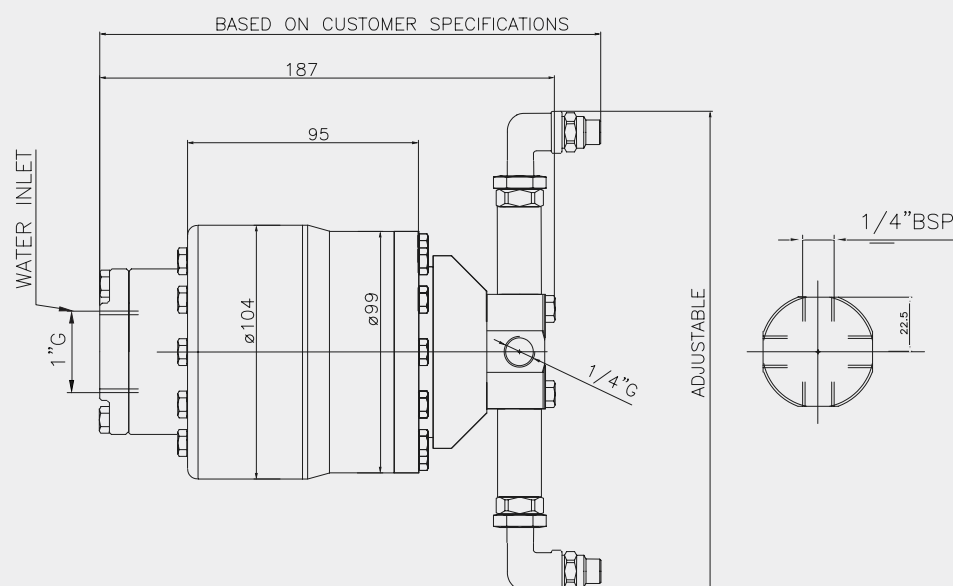


#### TECHNICAL SPECIFICATIONS

#### PW200-SP\_CF

FLOW RATE	60 - 200 l/min
MAX PRESSURE	200 bar
MAX TEMPERATURE	90 °C
FILTER	700 micron
NOZZLES	1/4" NPT
MATERIALS	Gaskets: NBR - EPDM - VITON AISI 316
INLET HOLE	Variable depending on the spray arm configuration
ROTATION SPEED	<b>PW200-SL_CF</b> 8-18 rpm <b>PW200-SP_CF</b> 70-100 rpm
WEIGHT	7.1 kg

CE | Atex Ex II 1 GD



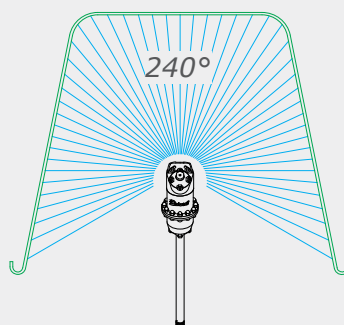


### Acquamotor (water-driven)

**SW053A** self-rotating cleaning head with flow-rate priority, filter and coaxial discharge. Versions available with 2-3-4 nozzles.

#### APPLICATIONS

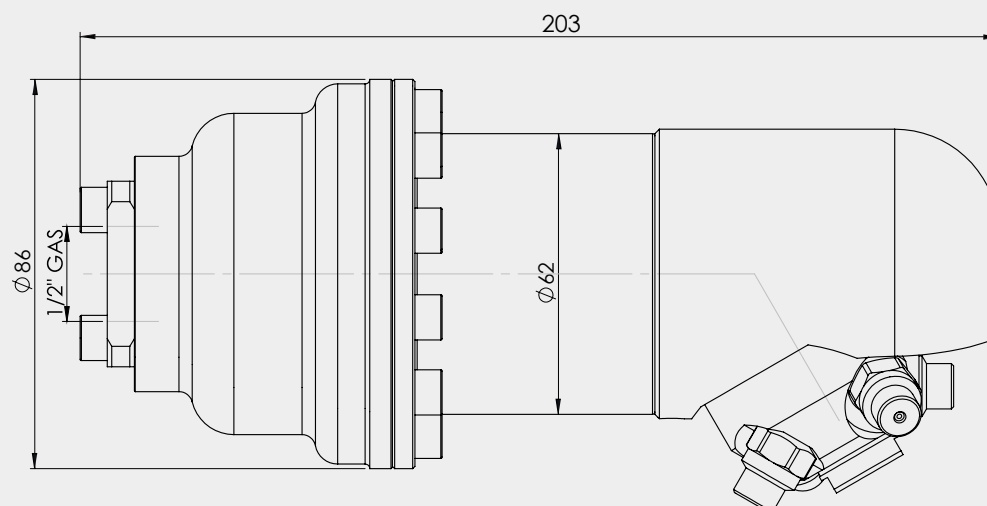
- Cleaning of open containers
- Cleaning of crates
- Cleaning of bins
- Cleaning of machinery interiors



**SW053A**

#### TECHNICAL SPECIFICATIONS

FLOW RATE	10 - 60 l/min
MAX PRESSURE	150 bar
MAX TEMPERATURE	90 °C
FILTER	700 micron
NOZZLES	1/8" NPT
MATERIALS	Gaskets: NBR - EPDM - VITON AISI 316 - ALUMINIUM - BRASS
INLET HOLE	Ø88 mm
ROTATION SPEED	80-120 rpm
FULL CYCLE DURATION	20-30 sec
SPRAY COVERAGE ANGLE	240°
WEIGHT	3 kg

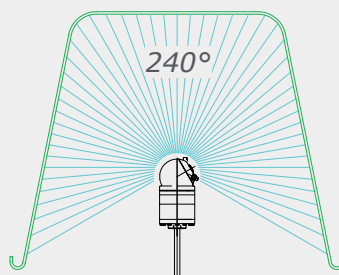


Acquamotor (water-driven)

**SW060A-CF\_SF** self-rotating head with flow-rate priority with or without filter and co-axial discharge.  
Versions available with 2-4 nozzles.

### APPLICATIONS

- Cleaning of bins



**SW060A-CF**

### TECHNICAL SPECIFICATIONS

MAX FLOW RATE 60 l/min

MAX PRESSURE 200 bar

MAX TEMPERATURE 90 °C

FILTER 700 micron

NOZZLES 1/8" G

MATERIALS

Gaskets: NBR - EPDM - VITON

AISI 316 - ALUMINIUM

INLET HOLE Ø100 mm

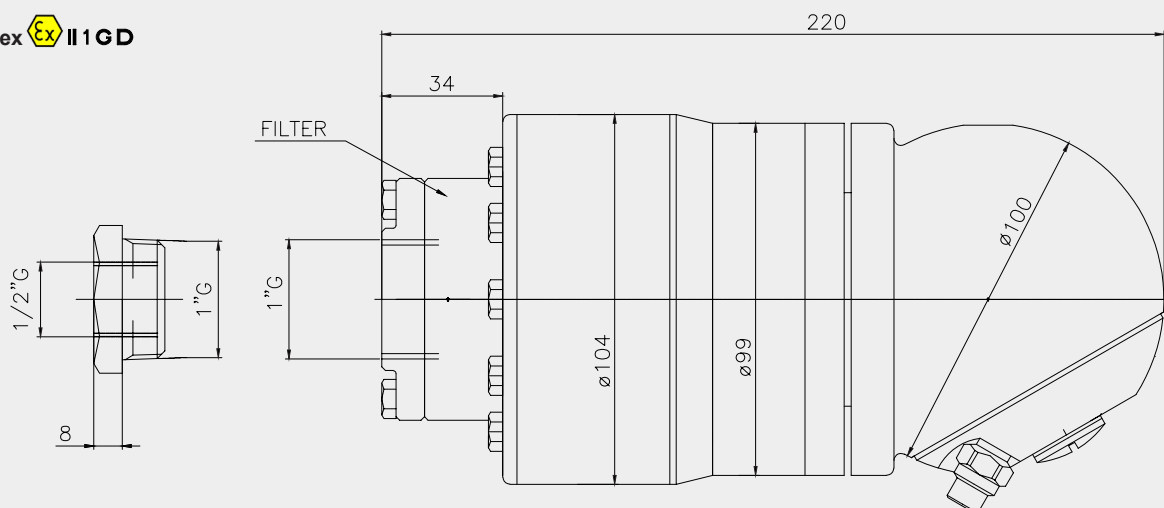
ROTATION SPEED 80-120 rpm

FULL CYCLE DURATION 20-30 sec

SPRAY COVERAGE ANGLE 240°

WEIGHT 5.5 kg

CE | Atex Ex II 1 GD

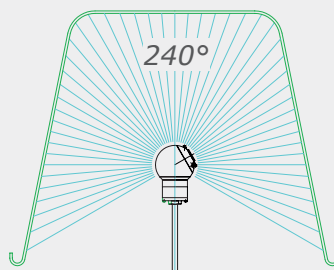


Acquamotor (water-driven)

**SW120A-CF** self-rotating head with flow-rate priority, filter and coaxial discharge. Versions available with 2-4 nozzles.

### APPLICATIONS

- Cleaning of bins

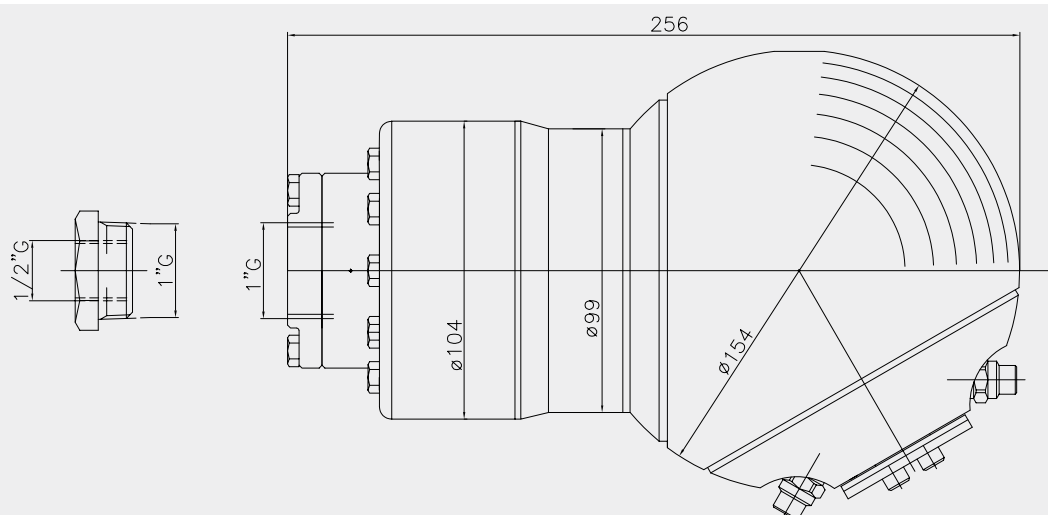


**SW120A-CF**

### TECHNICAL SPECIFICATIONS

MAX FLOW RATE	120 l/min
MAX PRESSURE	200 bar
MAX TEMPERATURE	90 °C
FILTER	700 micron
NOZZLES	1/4" G
MATERIALS	Gaskets: NBR - EPDM - VITON AISI 316 - ALUMINIUM
INLET HOLE	Ø160 mm
ROTATION SPEED	80-120 rpm
FULL CYCLE DURATION	20-30 sec
SPRAY COVERAGE ANGLE	240°
WEIGHT	10.5 kg

CE



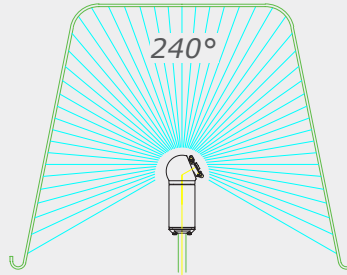
### Acquamotor (water-driven)

**SW190A** stainless steel self-rotating cleaning head with flow-rate priority, filter and coaxial discharge.

Versions available with 2-3-4 nozzles.

#### APPLICATIONS

- Pharmaceutical/food/cosmetics/chemical industry
- Cleaning of open containers
- Cleaning of bins

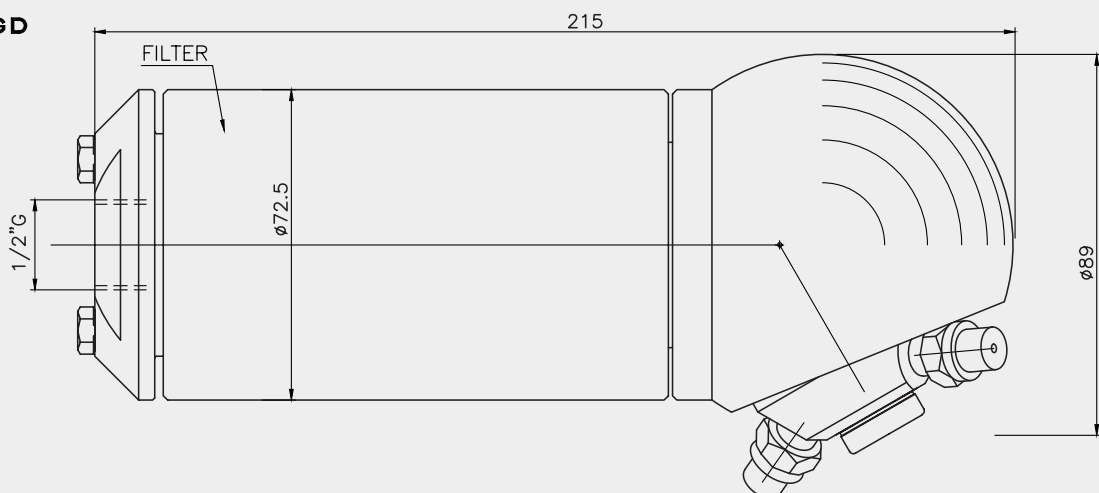


**SW190A**

#### TECHNICAL SPECIFICATIONS

FLOW RATE	15 - 60 l/min
MAX PRESSURE	200 bar
MAX TEMPERATURE	90 °C
FILTER	700 micron
NOZZLES	1/8" NPT
MATERIALS	Gaskets: NBR - EPDM - VITON AISI 316
INLET HOLE	-
ROTATION SPEED	80-120 rpm
FULL CYCLE DURATION	20-30 sec
SPRAY COVERAGE ANGLE	240°
WEIGHT	5 kg

CE | Atex  II 1 GD

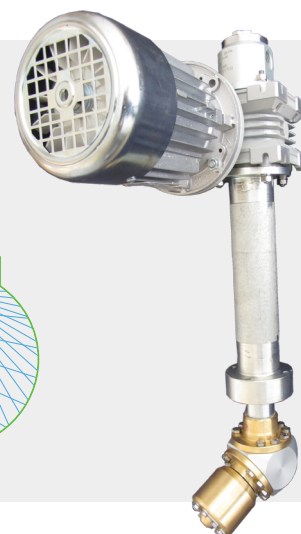
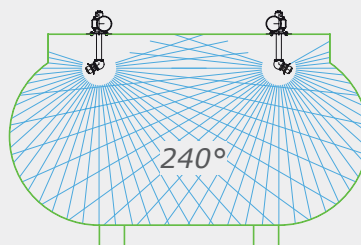


### Electrical

**XC070E-PT** is a sector cleaning head. Designed with axial discharge, it has an automatically opening nozzle protection system. Rotation is driven by a 400 V electric motor.

### APPLICATIONS

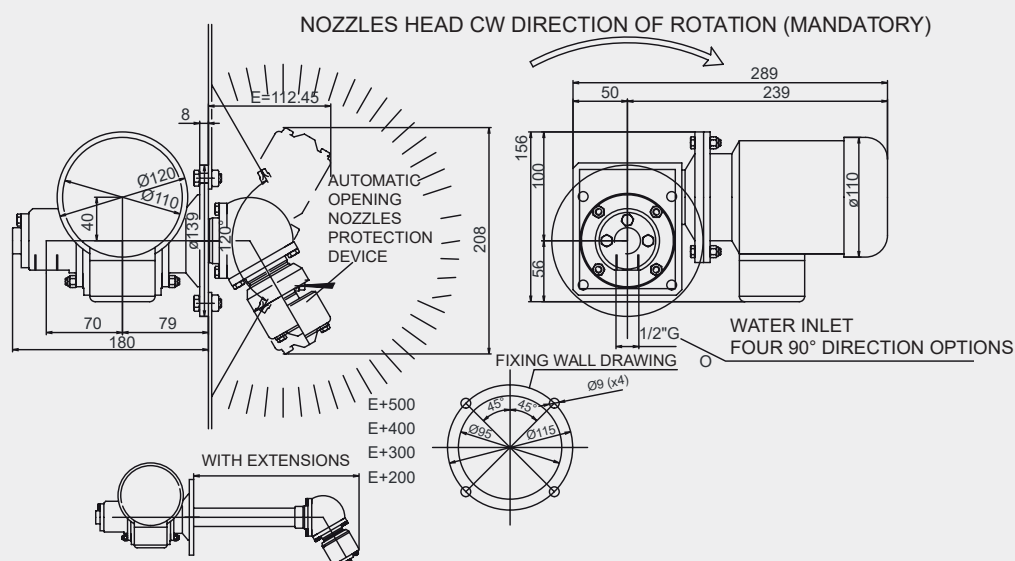
- 240° sector cleaning for concrete mixers



**XC070E-PT**

### TECHNICAL SPECIFICATIONS

MAX FLOW RATE	60 l/min
MAX PRESSURE	200 bar
MAX TEMPERATURE	90 °C
NOZZLES	2 or 4 special 1/8"
MATERIALS	Gaskets: NBR AISI 316 - BRASS OT58 (CW614N) - ALUMINIUM
INLET HOLE	Ø160 mm
ELECTRIC MOTOR	400 V - 0.09 kW
ROTATION SPEED	18 rpm
SPRAY COVERAGE ANGLE	240°
WEIGHT	12.5 kg

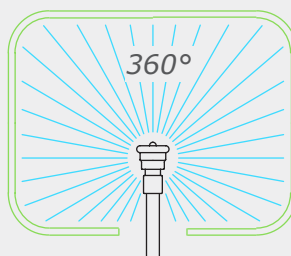


### Acquamotor (water-driven)

**RT** is a cleaning head driven by the reactive force of the cleaning fluid itself. Rotation is enabled by a ball bearing track made of AISI 316 stainless steel.

### APPLICATIONS

- Tank washing
- Mixer washing

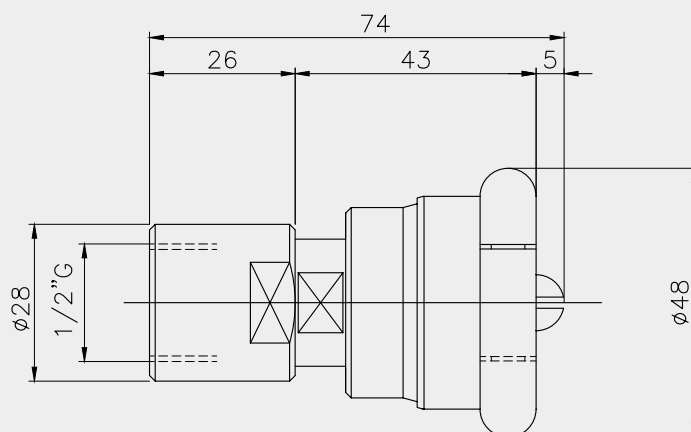


**RT**

### TECHNICAL SPECIFICATIONS

FLOW RATE/PRESSURE	RT225	l/min	15	21	27	32,5	35	
		bar	2	4	6	8	10	
	RT235	l/min	18	25	32	36	41	
		bar	2	4	6	8	10	
	RT255	l/min	20,5	40	53	63	75	83
		bar	1	2	4	6	8	10
WATER INLET		1/2" G						
MAX TEMPERATURE		90 °C						
MATERIAL		AISI 316						
INLET HOLE		Ø49 mm						
WEIGHT		0.285 kg						

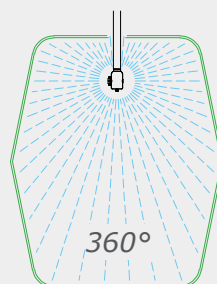
CE | Atex II 1 GD



**XM015** self-rotating or motorised rotating head without oil or grease. Cleaning is carried out at low pressure with 2 or 4 nozzles. Lateral discharge for the electrical and pneumatic version, and coaxial discharge for the water-driven version (aquamotor).

### APPLICATIONS

- Internal cleaning of small containers



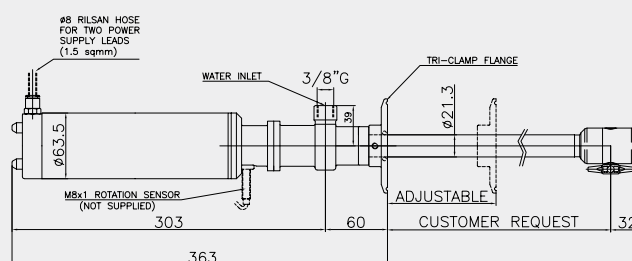
**XM015-P**



TECHNICAL SPECIFICATIONS	XM015-A	XM015-E	XM015-P
FLOW RATE	3 - 15 l/min	3 - 15 l/min	3 - 15 l/min
MAX PRESSURE	10 bar	10 bar	10 bar
MAX TEMPERATURE	90 °C	90 °C	90 °C
NOZZLES	M6	M6	M6
MATERIALS	Gaskets: EPDM - Bushes: PEEK AISI 316		
INLET HOLE	2 x Ø57 mm nozzles - 4 x Ø66 mm nozzles		
FULL CYCLE DURATION	1 min at 20 rpm	1 min	1 min at 3 bar air pressure
MOTOR	Water-driven motor	Electric motor: 24V DC	Pneumatic motor: 1 to 6 bar
WEIGHT	~7.5 kg	7.5 kg	7.5 kg

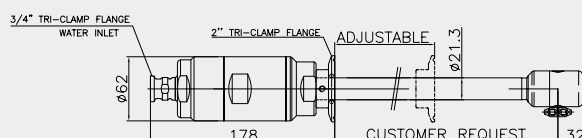
CE

XM015-E



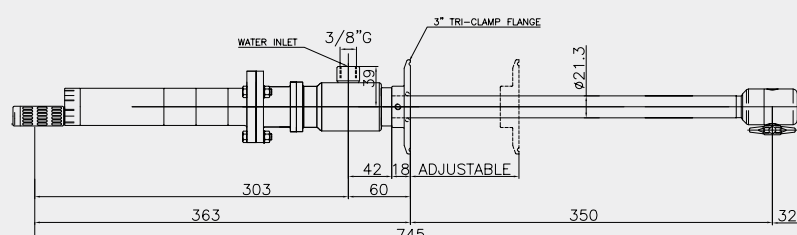
CE

XM015-A



CE | Atex Ex II 1GD

XM015-P

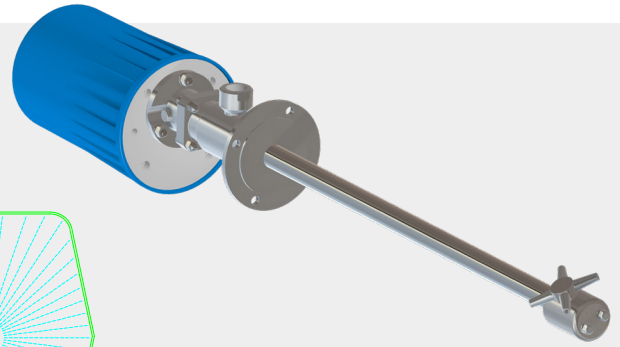
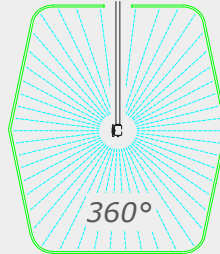




**XM030** motorised rotating head without oil or grease with lateral discharge. Cleaning is carried out at low pressure with 2 or 4 nozzles.

### APPLICATIONS

- Internal cleaning of small tanks
- Cleaning of bins

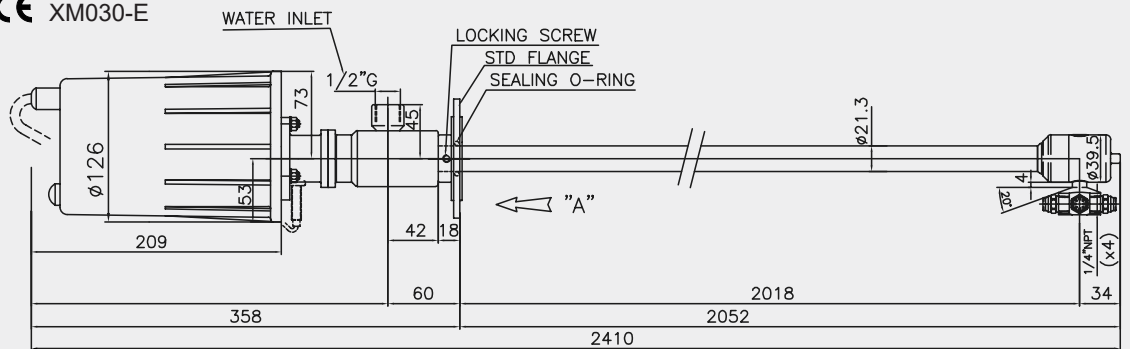


**XM030-E**

### TECHNICAL SPECIFICATIONS

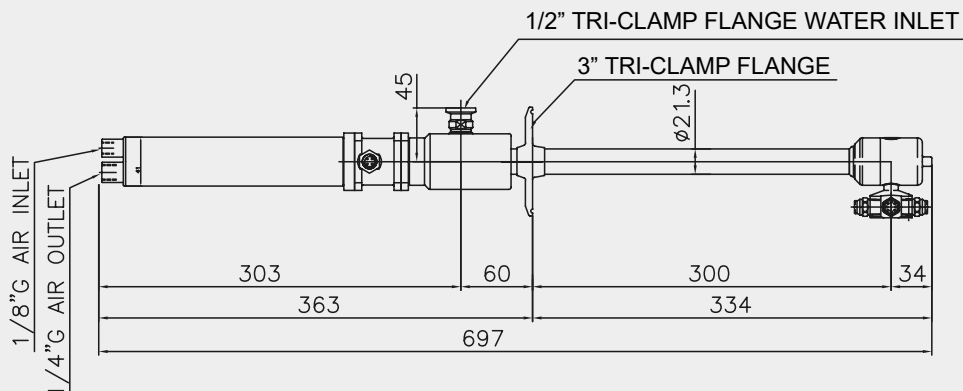
	XM030-E	XM030-P
FLOW RATE	3 - 30 l/min	3 - 30 l/min
MAX PRESSURE	10 bar	10 bar
MAX TEMPERATURE	90 °C	90 °C
NOZZLES	1/4" NPT	1/4" NPT
MATERIALS	Gaskets: EPDM - Bushes: PEEK AISI 316	
INLET HOLE	2 x Ø69 mm nozzles - 4 x Ø89 mm nozzles	
FULL CYCLE DURATION	2 min	1 min at 3 bar air pressure
MOTOR	Available electric motors: 24V AC/DC 0.30 A   48V 50Hz 1ph 1.15 A 230V 50Hz 1ph 0.23 A   400V 50Hz 3ph 0.10 A	Pneumatic motor: 1 to 6 bar
WEIGHT	7.5 kg	7.5 kg

CE XM030-E



CE Atex II 1 GD

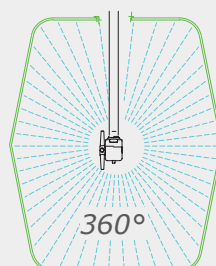
XM030-P



**XM060** self-rotating or motorised rotating head without oil or grease. Cleaning is carried out at low pressure with 2 or 4 nozzles. Lateral discharge for the electrical and pneumatic version, and coaxial discharge for the water-driven version (acquamotor).

## APPLICATIONS

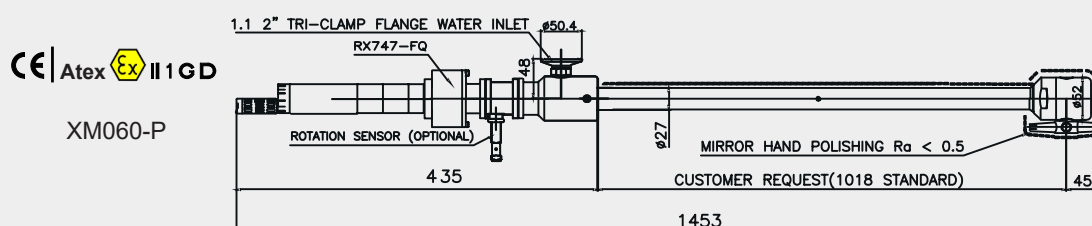
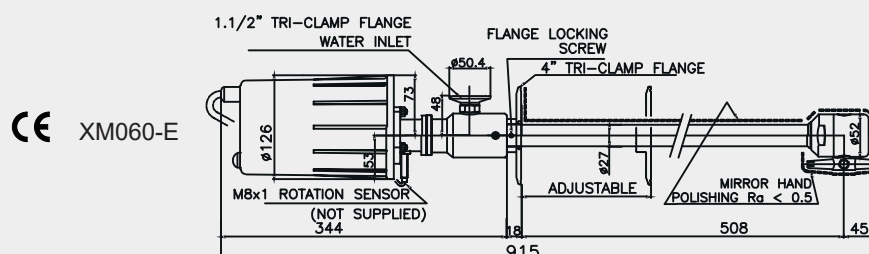
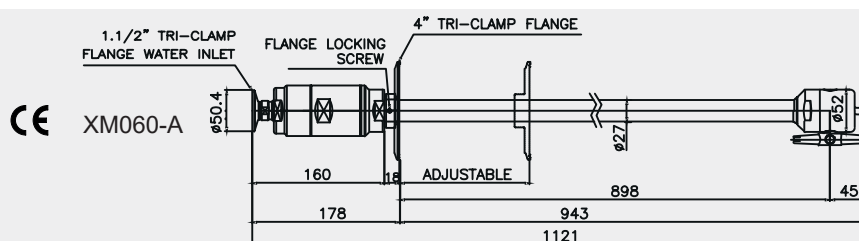
- Internal cleaning of small tanks
- Cleaning of bins
- Cleaning of medium to large containers



**XM060-A**



TECHNICAL SPECIFICATIONS	XM060-A	XM060-E	XM060-P
MAX FLOW RATE	80 l/min	80 l/min	80 l/min
MAX PRESSURE	10 bar	10 bar	10 bar
MAX TEMPERATURE	90 °C	90 °C	90 °C
NOZZLES	M12x1	M12x1	M12x1
MATERIALS	Gaskets: EPDM - Bushes: PEEK AISI 316		
INLET HOLE	Ø120 mm		
FULL CYCLE DURATION	1.5 min at 20 rpm	1.4 min	0.6 min at 3 bar air pressure
MOTOR	Water-driven motor	Available electric motors: 24V AC/DC 0.30 A   48V 50Hz 1ph 1.15 A 230V 50Hz 1ph 0.23 A   400V 50Hz 3ph 0.10 A	Pneumatic motor: 1 to 6 bar
WEIGHT	7.5 kg	7.5 kg	7.5 kg

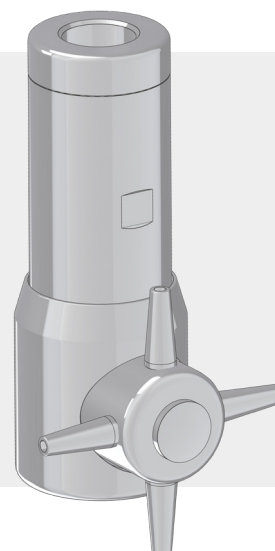
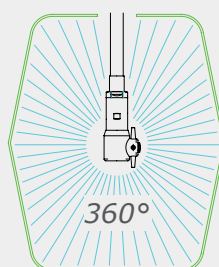


## Acquamotor (water-driven)

**XM100-A** water motor cleaning head without oil and grease made in full AISI 316L, equipped with 2 or 4 nozzles, suitable for a 360° cleaning in application where it's required low pressure and high flow.

### APPLICATIONS

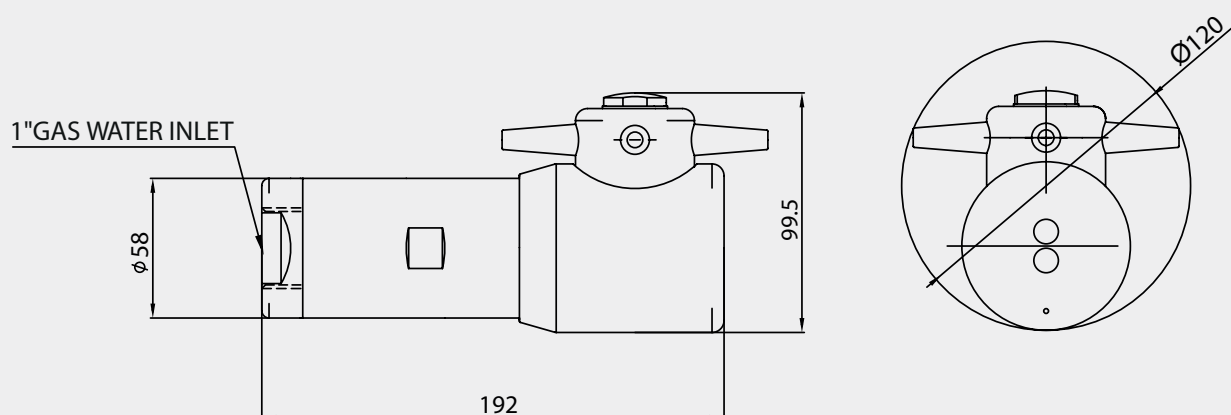
Tank and vessel cleaning in food, pharma and beverage industry.



**XM100-A**

### TECHNICAL SPECIFICATIONS

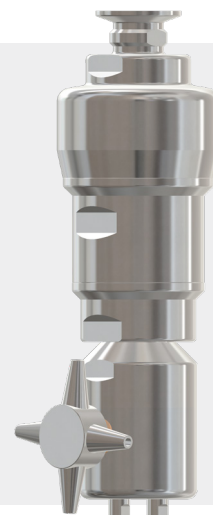
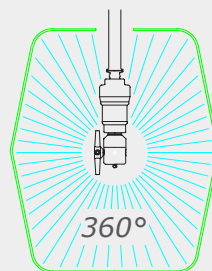
FLOW	20 - 120 l/min
PRESSURE	0,5 - 10 bar
MAX TEMPERATURE	90 °C
NOZZLES	M12x1
MATERIAL	Gaskets: EPDM - Bushing: PEEK AISI 316L
INLET HOLE	Ø120 mm
ROTATION SPEED	22÷32 rpm
FULL CYCLE	48 rotations
SPRAY COVERAGE ANGLE	360°
WEIGHT	3.1 Kg



**XM200** self-rotating or motorised rotating head without oil or grease. Cleaning is carried out at low pressure with 2 or 4 nozzles. Lateral discharge for the electrical and pneumatic version, and coaxial discharge for the water-driven version (acquamotor).

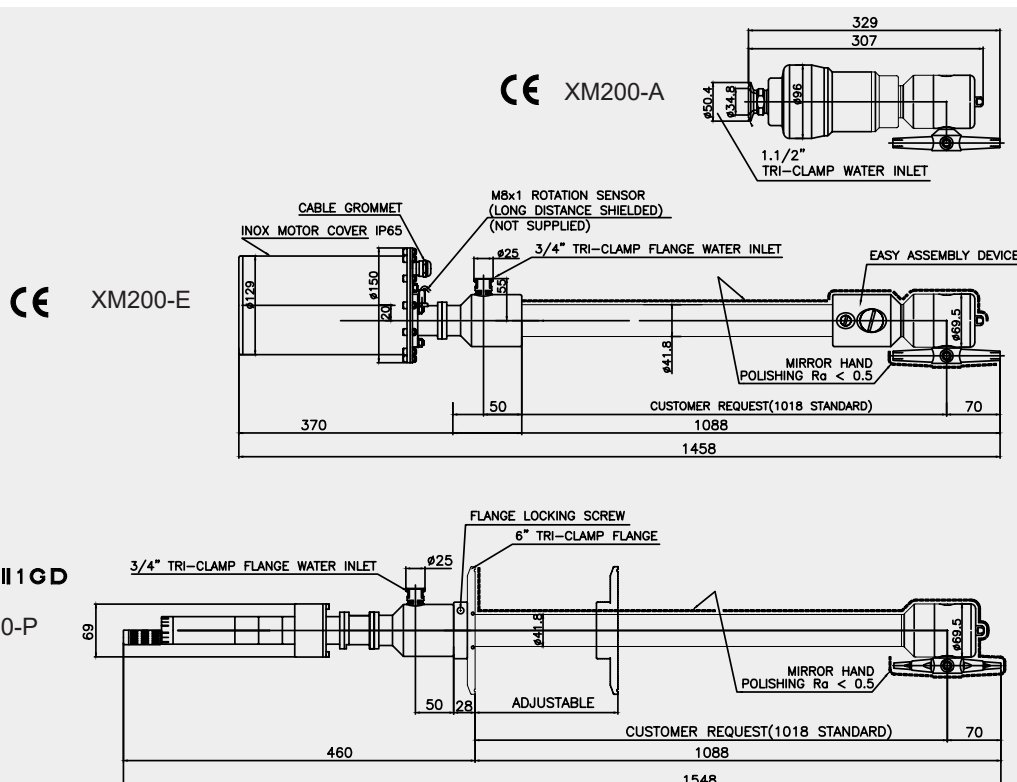
## APPLICATIONS

- Internal cleaning of small tanks
- Cleaning of bins
- Cleaning of medium to large containers



## XM200-A

TECHNICAL SPECIFICATIONS	XM200-A	XM200-E	XM200-P
FLOW RATE	3 - 200 l/min	3 - 200 l/min	3 - 200 l/min
MAX PRESSURE	10 bar	10 bar	10 bar
MAX TEMPERATURE	90 °C	90 °C	90 °C
NOZZLES	M16x1	M16x1	M16x1
MATERIALS	Gaskets: EPDM - Bushes: PEEK		
	AISI 316		
INLET HOLE	Ø185 mm	Ø185 mm	Ø185 mm
FULL CYCLE DURATION	1 min at 20 rpm	1 min	1.5 min at 4 bar air pressure
MOTOR	Water-driven motor	Available electric motors: 24V AC/DC 0.30 A   48V 50Hz 1ph 1.15 A 230V 50Hz 1ph 0.23 A   400V 50Hz 3ph 0.10 A	Pneumatic motor: 1 to 6 bar
WEIGHT	-	7.5 kg	7.5 kg

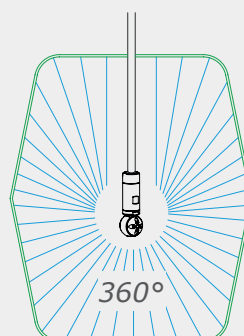


## Acquamotor (water-driven)

**IB200** is a self-rotating and self-braking cleaning head. The unique operating principle ensures uniform cleaning of the entire volume.  
2 or 4 nozzles.

### APPLICATIONS

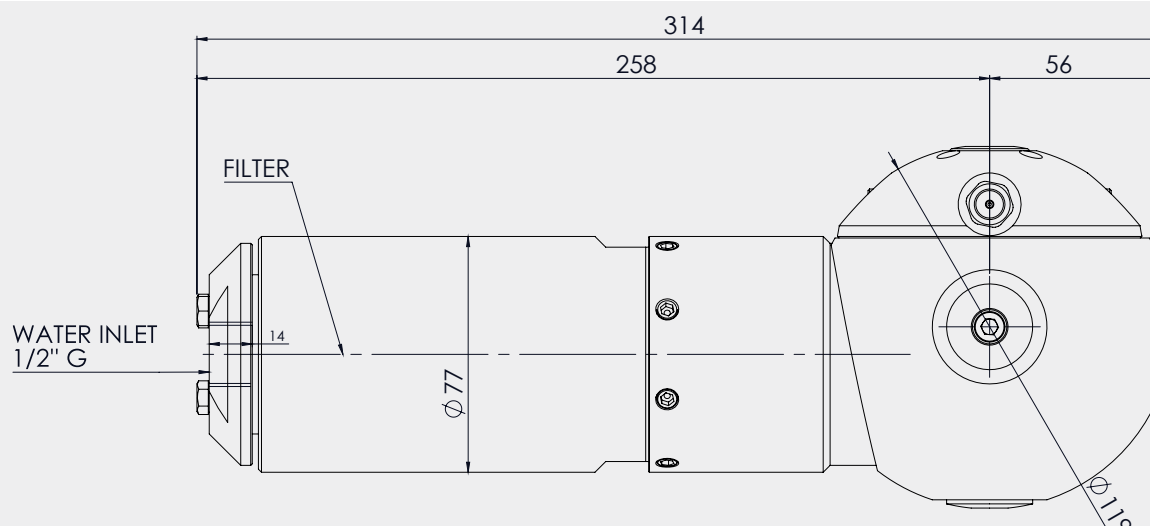
- Cleaning of medium/large tanks
- Cleaning of chemical industry tanks
- Cleaning of wine industry tanks and vats



**IB200**

### TECHNICAL SPECIFICATIONS

MAX FLOW RATE	60 l/min
MAX PRESSURE	200 bar
MAX TEMPERATURE	90 °C
FILTER	700 micron
LUBRICATION	<b>NO</b>
NOZZLES	1/4" NPT
MATERIALS	Gaskets: NBR - EPDM - VITON AISI 316
INLET HOLE	Ø120 mm
FULL CYCLE DURATION	2.5-5 min
SPRAY COVERAGE ANGLE	360°
WEIGHT	5 kg

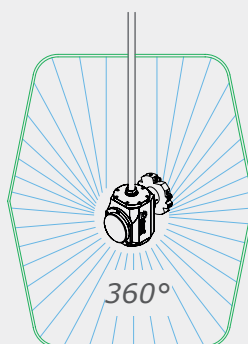


### Acquamotor (water-driven)

**FV020** is a self-rotating and self-braking cleaning head. The unique operating principle ensures uniform cleaning of the entire volume. 2 or 4 nozzles.

#### APPLICATIONS

- Cleaning of medium/large tanks
- Cleaning of chemical industry tanks
- Cleaning of wine industry tanks and vats



**FV020**

#### TECHNICAL SPECIFICATIONS

##### Version up to 200 bar

##### Version up to 400 bar

MAX FLOW RATE

200 l/min

60 l/min

MAX PRESSURE

200 bar

400 bar

MAX TEMPERATURE

90 °C

LUBRICATION

Silicone oil bath viscosity 20-100-350-5000

NOZZLES

1/4" G

INLET CONNECTION

1/2" G

SEALS

NBR - EPDM

360° CYCLE TIME

2-12 min

SPRAY COVERAGE ANGLE

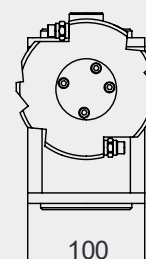
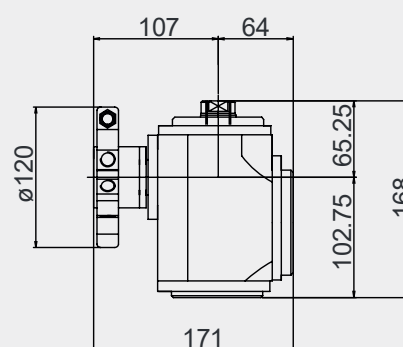
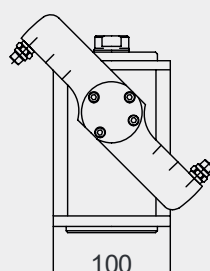
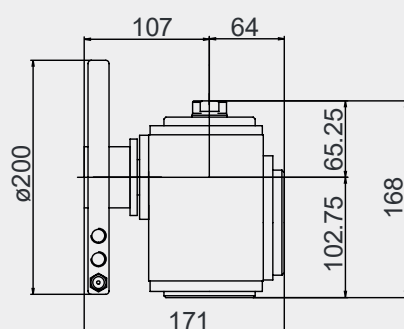
360°

MATERIAL/WEIGHT

ALUMINIUM 6082 (EN 573/UNI 3571) weight 5 kg

AISI 316 STAINLESS STEEL weight 10.5 kg

CE | Atex  II 1 GD

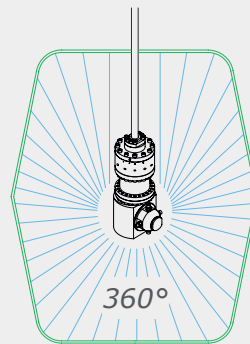


### Acquamotor (water-driven)

**MW586A** is a self-rotating cleaning head with flow-rate priority without oil or grease. Cleaning is carried out with 2 or 4 nozzles. Equipped with a filter and with coaxial discharge, it is characterised by low speed rotation and can operate at very high pressures up to **500 bar**.

### APPLICATIONS

- Internal cleaning of small tanks
- Cleaning of IBCs
- Cleaning of road tankers
- Cleaning of silos

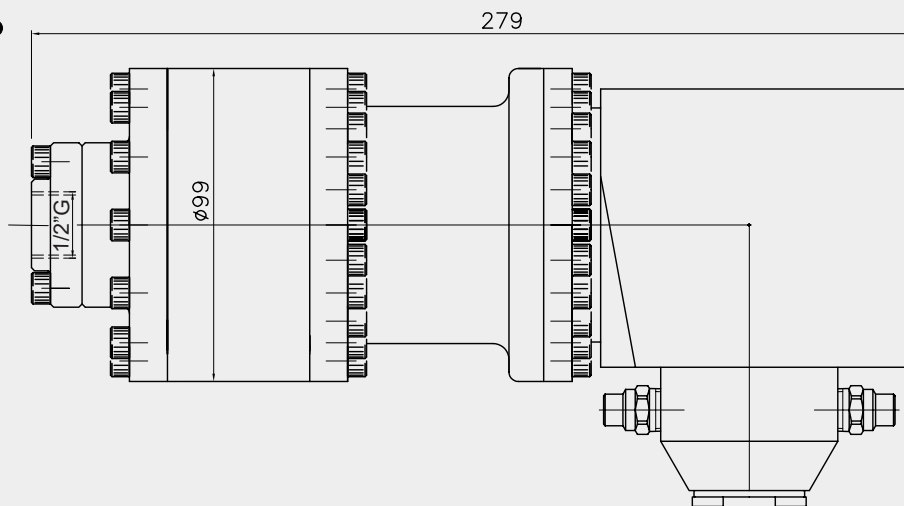


**MW586A**

### TECHNICAL SPECIFICATIONS

MAX FLOW RATE	60 l/min
MAX PRESSURE	500 bar
MAX TEMPERATURE	90 °C
FILTER	700 micron
NOZZLES	1/4" NPT
MATERIALS	NBR - EPDM - VITON PTFE+CARBON FIBRE - AISI 316
INLET HOLE	Ø180 mm
ROTATION SPEED	5 to 16 rpm
SPRAY COVERAGE ANGLE	360°
WEIGHT	9.6 kg

CE | Atex | Ex | II 1 GD



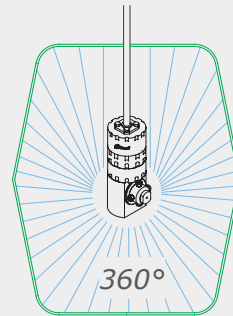


### Acquamotor (water-driven)

**RW030A** self-rotating cleaning head with flow-rate priority without oil or grease. Characterised by a low rotation speed, it is designed with coaxial discharge, comes equipped with a filter, and can be used with 2-4 nozzles, guaranteeing an effective wash cycle with 360° spray coverage.

#### APPLICATIONS

- Internal cleaning of tanks
- Internal cleaning of medium-sized vats

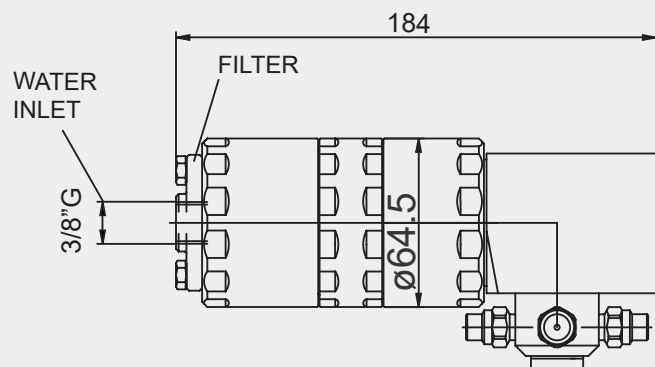
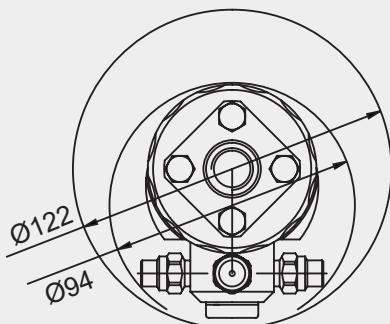


**RW030A**

#### TECHNICAL SPECIFICATIONS

FLOW RATE	10 - 30 l/min
MAX PRESSURE	150 bar
MAX TEMPERATURE	90 °C
FILTER	700 micron
NOZZLES	1/8" NPT
MATERIALS	Gaskets: NBR - EPDM - VITON AISI 316
INLET HOLE	Ø122 mm
ROTATION SPEED	15-25 rpm
SPRAY COVERAGE ANGLE	360°
WEIGHT	2.7 kg

CE | Atex  II 1 GD

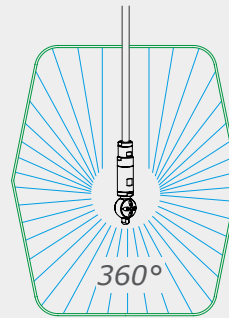


### Acquamotor (water-driven)

**RW033A** self-rotating cleaning head with flow-rate priority. Does not require oil or grease. Designed for use in a variety of areas of application. With its reduced dimensions, it can be introduced into restricted spaces. It requires minimal maintenance and can operate using 2 or 4 nozzles, guaranteeing effective 360° cleaning.

### APPLICATIONS

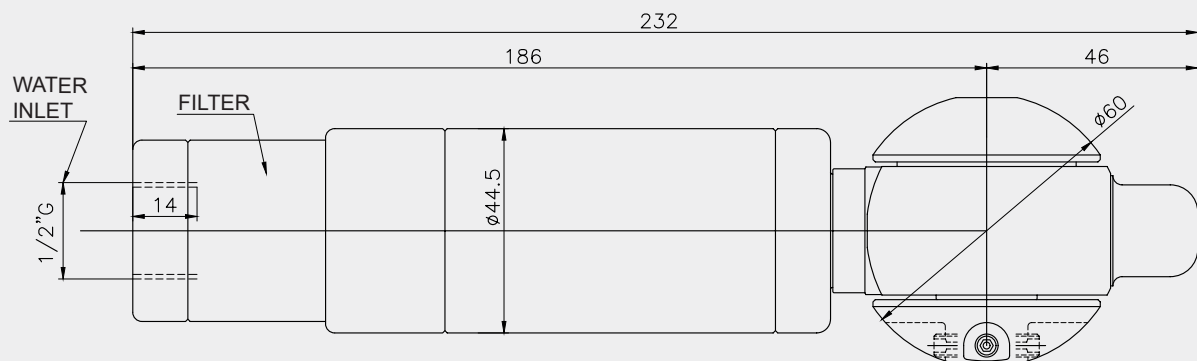
- Pharmaceutical/food/cosmetics/chemical industry
- Cleaning of containers, drums, small tanks and IBCs



**RW033A**

### TECHNICAL SPECIFICATIONS

FLOW RATE	8 - 30 l/min
MAX PRESSURE	150 bar
MAX TEMPERATURE	90 °C
FILTER	700 micron
NOZZLES	M5
MATERIALS	Gaskets: NBR - EPDM - VITON AISI 316
INLET HOLE	Ø60 mm
ROTATION SPEED	15-25 rpm
SPRAY COVERAGE ANGLE	360°
WEIGHT	1.8 kg

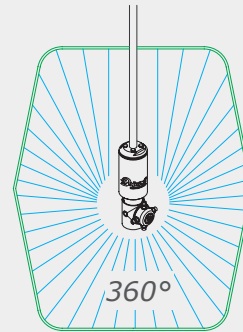


### Acquamotor (water-driven)

**RW190A** self-rotating cleaning head with flow-rate priority. Does not require oil or grease. Cleaning is carried out with 2 or 4 nozzles. Equipped with a filter and with coaxial discharge, it is characterised by low speed rotation.

### APPLICATIONS

- Pharmaceutical/food/cosmetics/chemical industry
- Cleaning of IBCs
- Cleaning of tanks, reservoirs, large containers and industrial machinery interiors

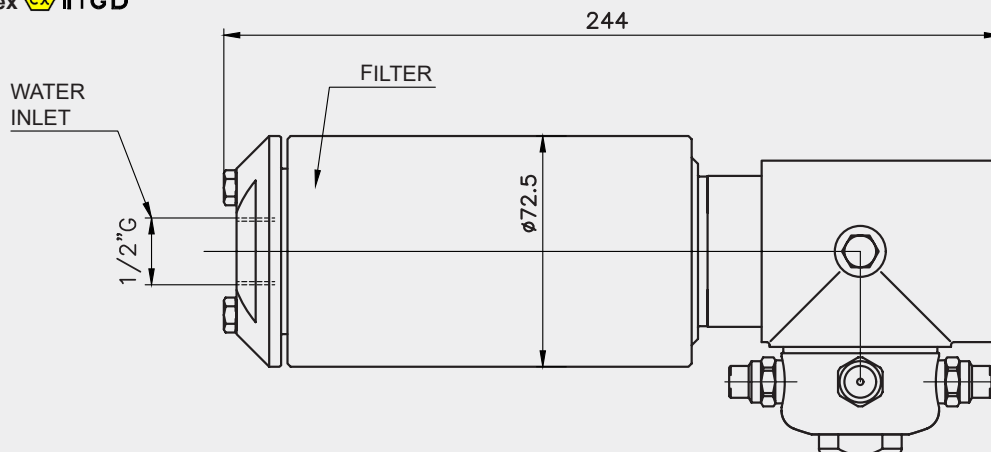


**RW190A**

### TECHNICAL SPECIFICATIONS

MAX FLOW RATE	60 l/min
MAX PRESSURE	200 bar
MAX TEMPERATURE	90 °C
FILTER	700 micron
NOZZLES	1/4" NPT
MATERIALS	Gaskets: NBR - EPDM - VITON AISI 316
INLET HOLE	Ø123 mm
ROTATION SPEED	15-25 rpm
SPRAY COVERAGE ANGLE	360°
WEIGHT	5 kg

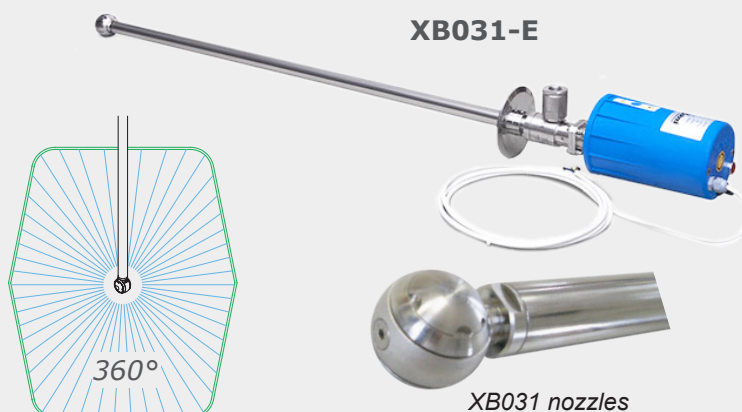
CE | Atex II 1 GD



**XB031** self-rotating or motorised spherical rotating head without oil or grease. Cleaning is carried out at low pressure with 2 or 4 nozzles. With filter and lateral discharge for the electrical and pneumatic version, and coaxial discharge for the water-driven version (acquamotor).

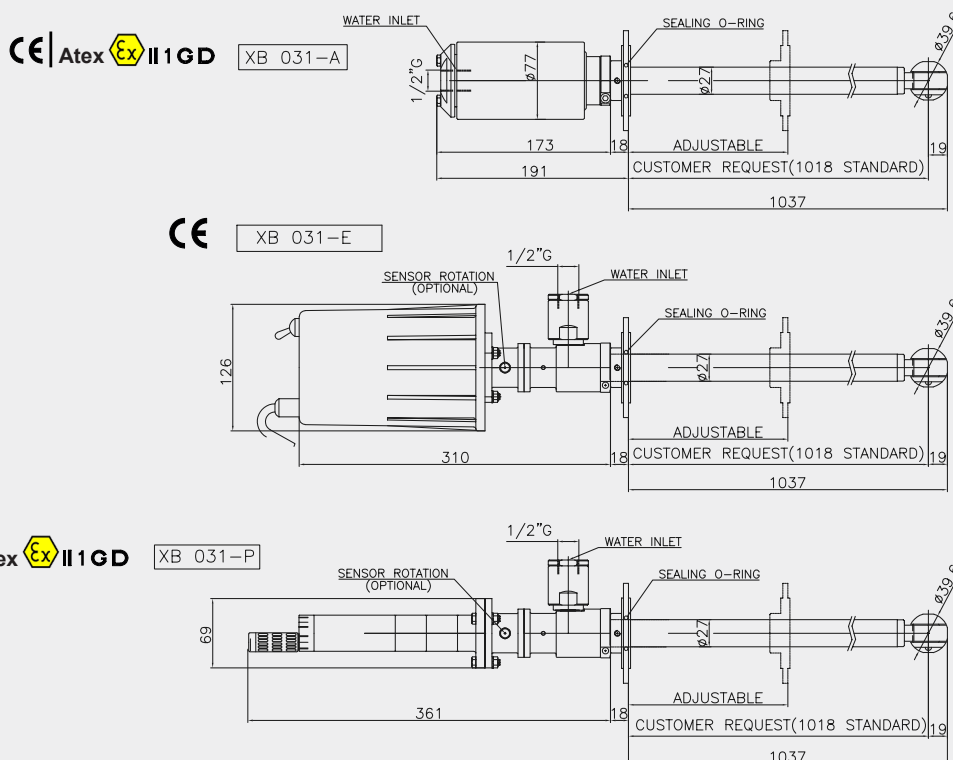
### APPLICATIONS

- Cleaning of small tanks
- Bins and drums
- Cleaning of food machinery



### TECHNICAL SPECIFICATIONS

	XB031-A	XB031-E	XB031-P
FLOW RATE	10 - 30 l/min	10 - 30 l/min	10 - 30 l/min
MAX PRESSURE	200 bar	200 bar	200 bar
MAX TEMPERATURE	90 °C	90 °C	90 °C
FILTER	700 micron	700 micron	700 micron
NOZZLES	Special XB031	Special XB031	Special XB031
MATERIALS	Gaskets: NBR - EPDM - VITON AISI 316	NBR - EPDM - VITON AISI 316	NBR - EPDM - VITON AISI 316
INLET HOLE	Ø40 mm	Ø40 mm	Ø40 mm
FULL CYCLE DURATION	1.2 min at 20 rpm	1.2 min at 20 rpm	1.2 min at 20 rpm
MOTOR	Water-driven motor	Available electric motors: 24V AC/DC 0.30 A   48V 50Hz 1ph 1.15 A 230V 50Hz 1ph 0.23 A   400V 50Hz 3ph 0.10 A	Pneumatic motor: 1 to 6 bar



**XB061** self-rotating or motorised spherical rotating head without oil or grease. Cleaning is carried out with 2 or 4 nozzles. With filter and lateral discharge for the electrical and pneumatic version, and coaxial discharge for the water-driven version (acquamotor).

### APPLICATIONS

- Cleaning of small tanks
- Bins and drums
- Cleaning of food machinery

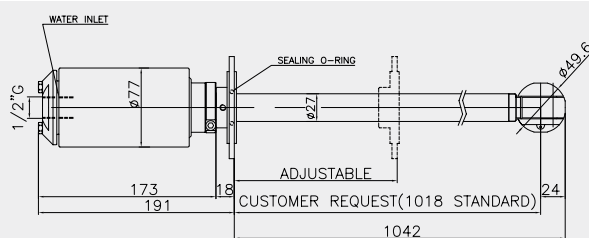


### TECHNICAL SPECIFICATIONS

	XB061-A	XB061-E	XB061-P
FLOW RATE	10 - 60 l/min	10 - 60 l/min	10 - 60 l/min
MAX PRESSURE	200 bar	200 bar	200 bar
MAX TEMPERATURE	90 °C	90 °C	90 °C
FILTER	700 micron	700 micron	700 micron
NOZZLES	Special XB061	Special XB061	Special XB061
MATERIALS	Gaskets: NBR - EPDM - VITON	NBR - EPDM - VITON	NBR - EPDM - VITON
	AISI 316	AISI 316	AISI 316
INLET HOLE	Ø50 mm	Ø50 mm	Ø50 mm
FULL CYCLE DURATION	1.2 min at 20 rpm	1.2 min at 20 rpm	1.2 min at 20 rpm
MOTOR	Water-driven motor	Available electric motors: 24V AC/DC 0.30 A   48V 50Hz 1ph 1.15 A 230V 50Hz 1ph 0.23 A   400V 50Hz 3ph 0.10 A	Pneumatic motor: 1 to 6 bar

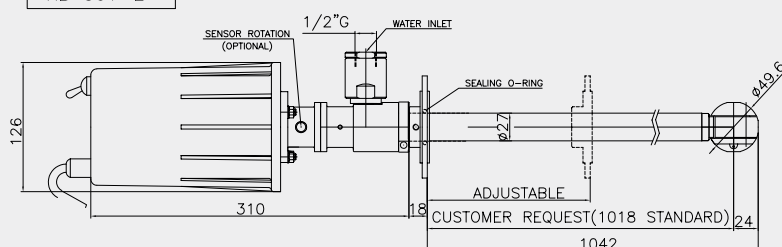
CE Atex Ex II 1GD

XB 061-A



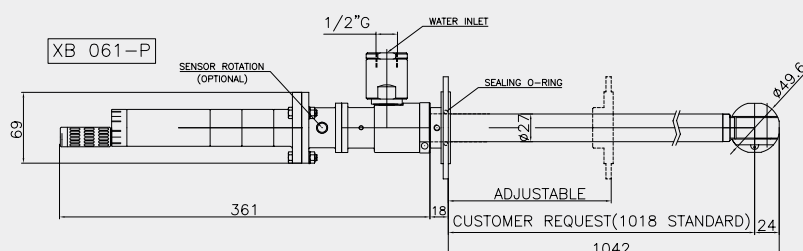
CE

XB 061-E



CE Atex Ex II 1GD

XB 061-P



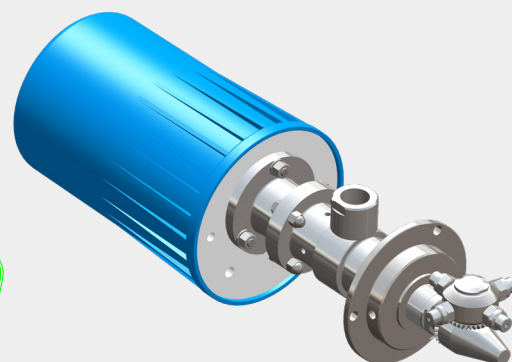
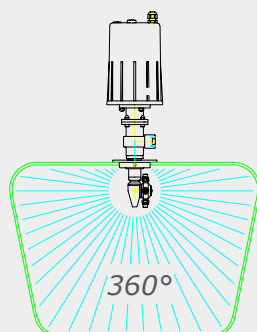
**XB061**

### Electrical

**XC035-EEB** motorised rotating cleaning head without oil or grease. Cleaning is carried out with 2 or 4 nozzles. Lateral discharge.

### APPLICATIONS

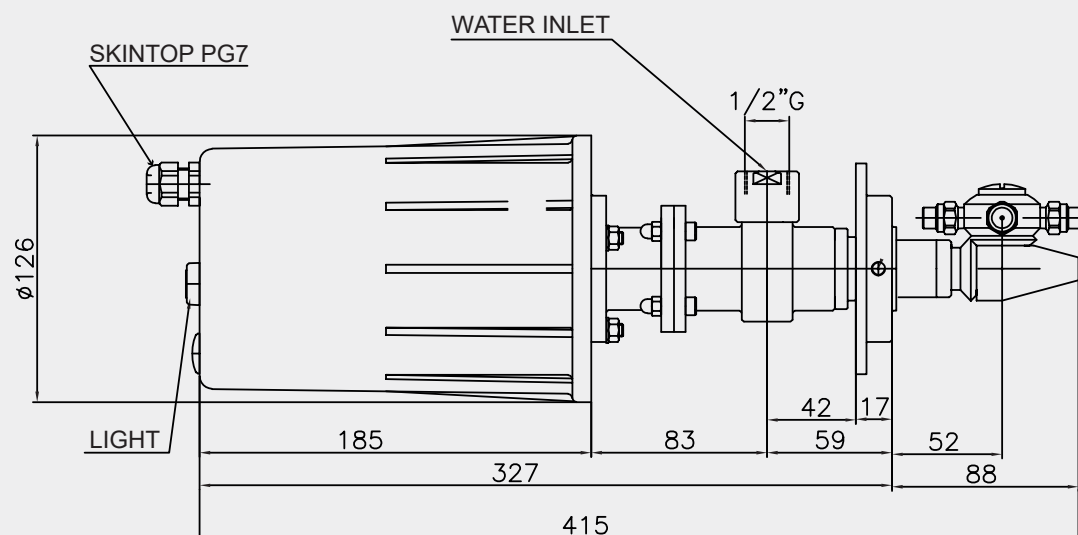
- Cleaning of food machinery



**XC035-EEB**

### TECHNICAL SPECIFICATIONS

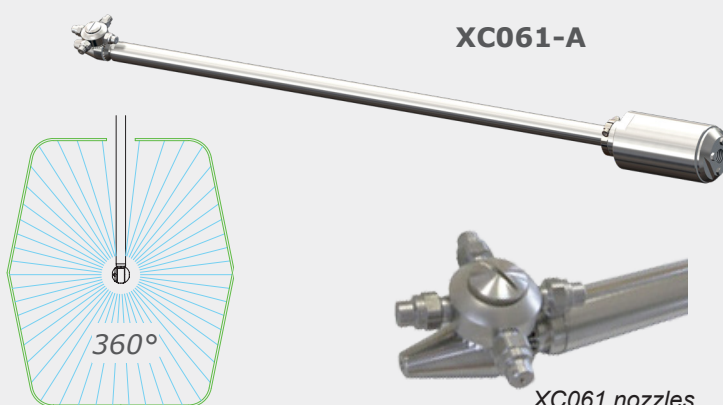
MAX FLOW RATE	60 l/min
MAX PRESSURE	20 bar
MAX TEMPERATURE	90 °C
NOZZLES	1/4" NPT
WATER INLET	1/2" G
MATERIALS	Gaskets: NBR-EPDM-VITON   Bushes: PEEK
	AISI 316
INLET HOLE	Ø95 mm
ELECTRIC MOTOR	24V AC/DC
WEIGHT	7.5 kg



**XC061** self-rotating or motorised rotating cleaning head without oil or grease. Cleaning is carried out with 2 or 4 nozzles. With filter and lateral discharge for the electrical and pneumatic version, and coaxial discharge for the water-driven version (acquamotor).

### APPLICATIONS

- Cleaning of small tanks
- Bins and drums
- Cleaning of food machinery



TECHNICAL SPECIFICATIONS	XC061-A	XC061-E	XC061-P
FLOW RATE	10 - 60 l/min	10 - 60 l/min	10 - 60 l/min
MAX PRESSURE	200 bar	200 bar	200 bar
MAX TEMPERATURE	90 °C	90 °C	90 °C
FILTER	700 micron	700 micron	700 micron
NOZZLES	1/8" NPT	1/8" NPT	1/8" NPT
MATERIALS	Gaskets: NBR - EPDM - VITON - KALREZ		
	AISI 316	AISI 316	AISI 316
INLET HOLE	Ø50 mm	Ø50 mm	Ø50 mm
FULL CYCLE DURATION	1.2 min at 20 rpm	1.2 min at 20 rpm	1.2 min at 20 rpm
MOTOR	Water-driven motor	Available electric motors: 24V AC/DC 0.30 A   48V 50Hz 1ph 1.15 A 230V 50Hz 1ph 0.23 A   400V 50Hz 3ph 0.10 A	Pneumatic motor: 1 to 6 bar

CE | Atex Ex II 1 GD

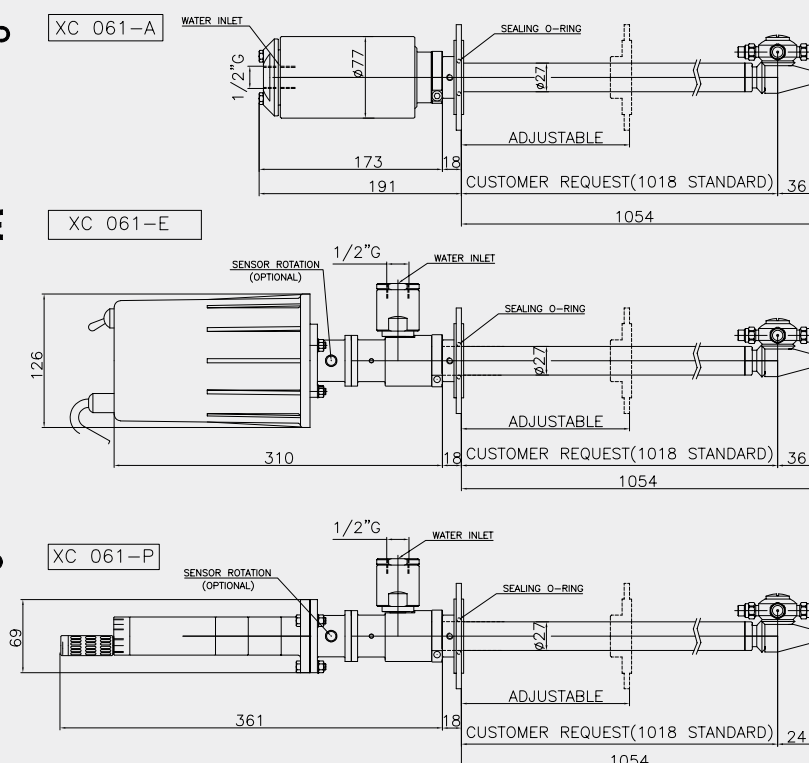
XC 061-A

CE

XC 061-E

CE | Atex Ex II 1 GD

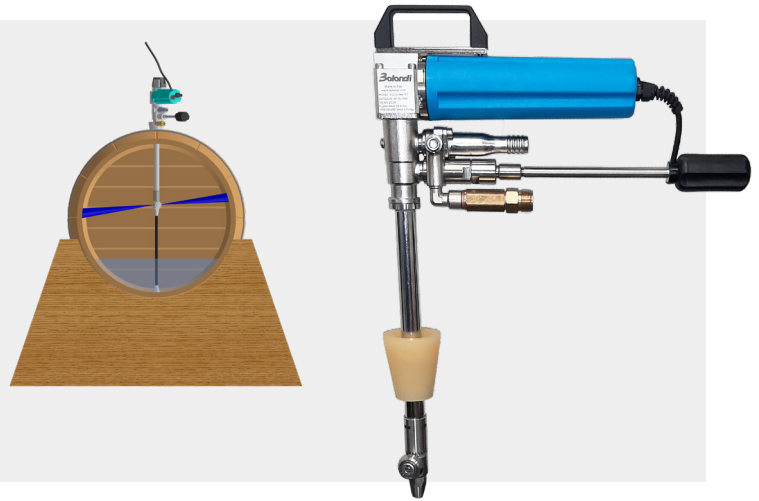
XC 061-P





### Electrical

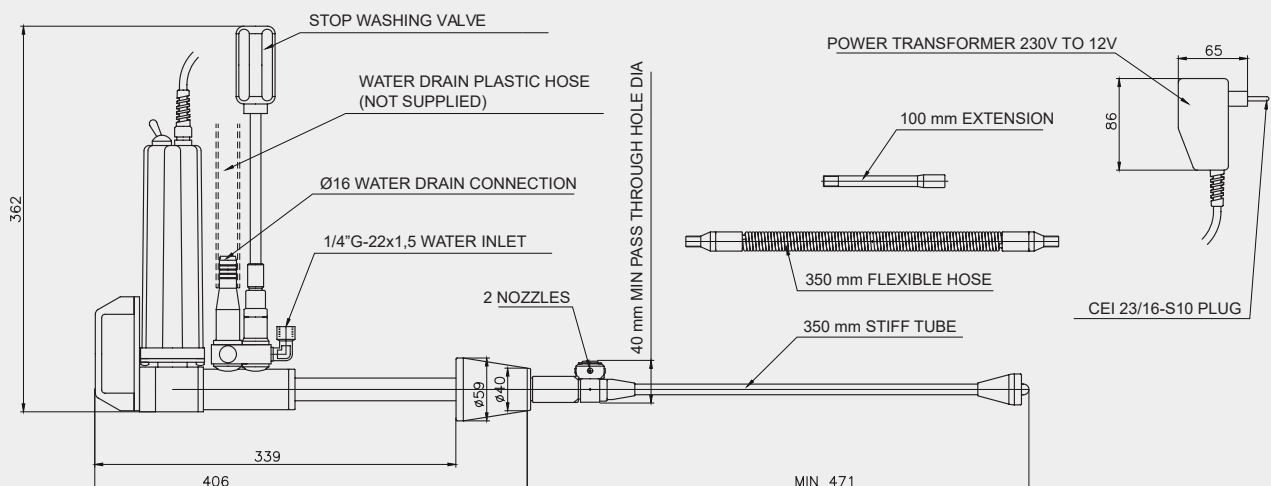
The **XC 020+Asp** cleaning head offers washing and suction at the same time, providing the ideal solution for the efficient washing of barriques and tonneaux due to its easy manoeuvrability, even in small spaces. Equipped with a 12V DC powered gearmotor and 10-metre power cable, it offers excellent flexibility during installation and use. The standard set-up allows washing and suction of up to 500 litres.



**XC 020+Asp**

### TECHNICAL SPECIFICATIONS

FLOW RATE	15 - 25 l/min
MAX PRESSURE	120 bar
MAX TEMPERATURE	90 °C
FILTER	700 micron
NOZZLES	2
MATERIALS	Gaskets: NBR AISI 316
INLET HOLE	Ø40 mm
ROTATION SPEED	10 rpm
ELECTRIC MOTOR	12V DC
WEIGHT	3.1 kg

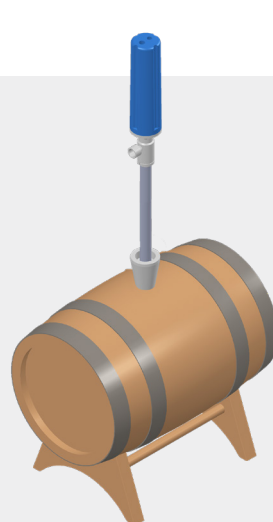


### Electrical

**ROTY 018** is a self-rotating cleaning head without oil or grease.

#### APPLICATIONS

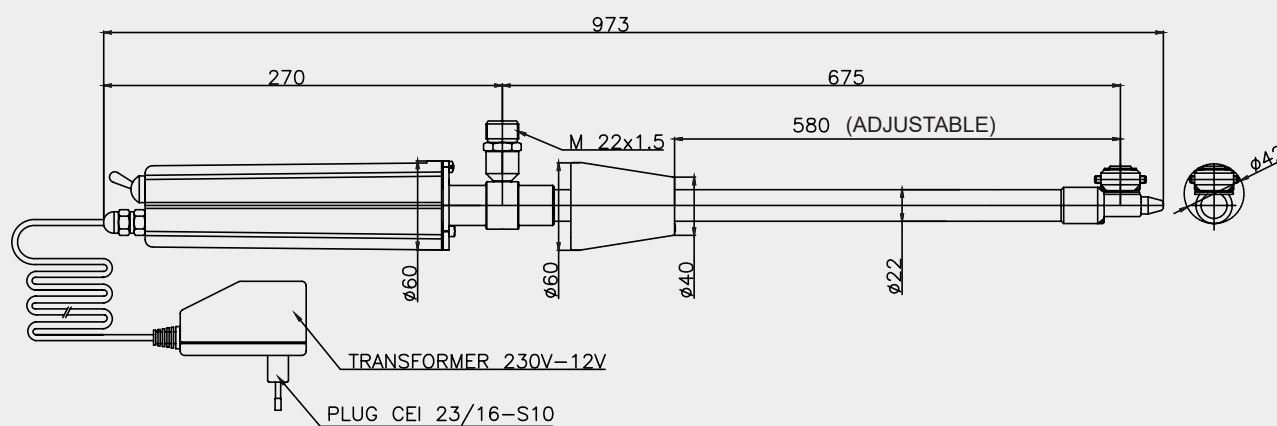
- Cleaning of barriques and small drums



**ROTY 018**

#### TECHNICAL SPECIFICATIONS

FLOW RATE	8 - 18 l/min
MAX PRESSURE	150 bar
MAX TEMPERATURE	90 °C
NOZZLES	2 x 1/4" NPT nozzles
MATERIALS	Gaskets: NBR
	AISI 316
INLET HOLE	Ø42 mm
ELECTRIC MOTOR	12V DC
POWER CABLE	10 m+transformer and plug
WEIGHT	3.1 kg

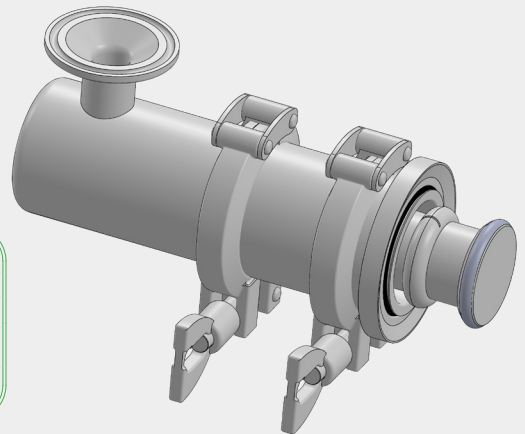
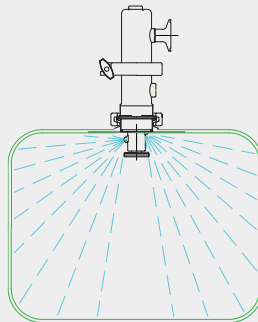


## Acquamotor (water-driven)

**RT611-AAA** is a cleaning head whose movement is driven by the reactive force of the cleaning fluid itself.

### APPLICATIONS

- Cleaning of food industry machinery interiors
- Cleaning of pharmaceutical industry pipework

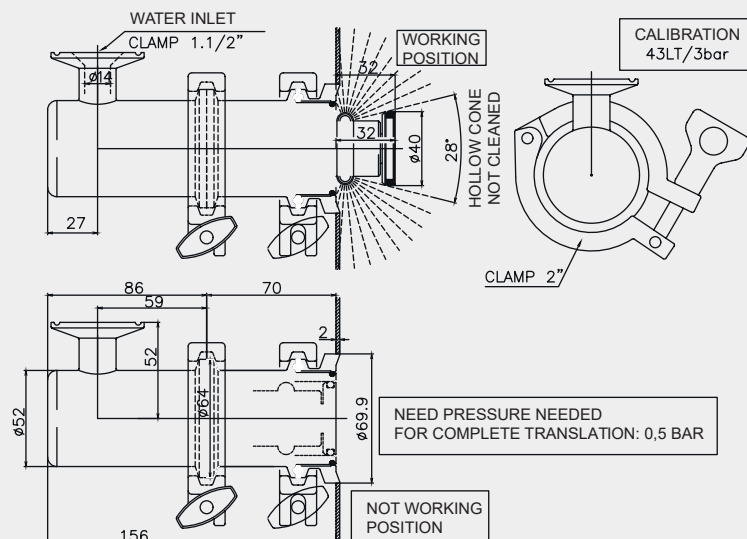


**RT611-AAA**

### TECHNICAL SPECIFICATIONS

#### Flow rate by pressure

FLOW RATE	l/min	33	43	49	55	61	66	71	76	80
PRESSURE	bar	2	3	4	5	6	7	8	9	10
WATER INLET	1"½ TRI-CLAMP									
MAX TEMPERATURE	90 °C									
O.RING	EPDM									
BUSHES	PEEK									
MATERIAL	AISI 316									
INLET HOLE	Ø45 mm									
WEIGHT	2.4 kg									

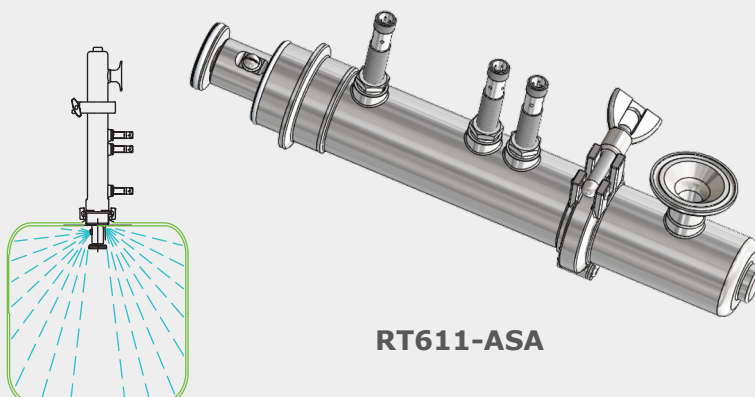


### Acquamotor (water-driven)

**RT611-ASA** is a cleaning head whose movement is driven by the reactive force of the cleaning fluid itself.

#### APPLICATIONS

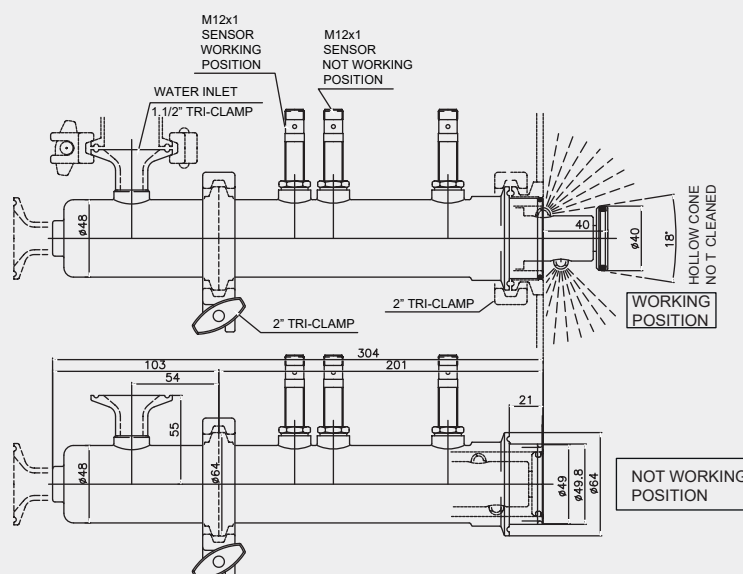
- Cleaning of food industry machinery interiors
- Cleaning of pharmaceutical industry pipework



#### TECHNICAL SPECIFICATIONS

##### Flow rate by pressure

FLOW RATE	l/min	10	15	19	22	24	27	29	31
PRESSURE	bar	1	2	3	4	5	6	7	8
WATER INLET	1 1/2" TRI-CLAMP								
MAX TEMPERATURE	90 °C								
O.RING	EPDM								
BUSHES	PEEK								
MATERIAL	AISI 316								
INLET HOLE	Ø45 mm								
WEIGHT	2.4 kg								

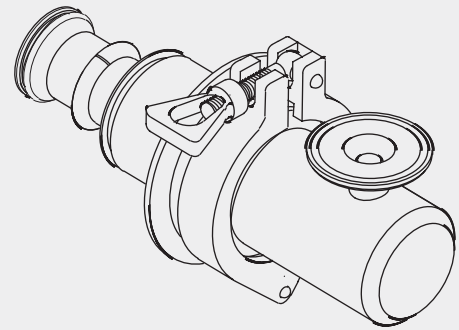
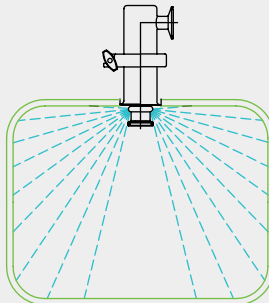


### Acquamotor (water-driven)

**RT111-AA** is a cleaning head whose movement is driven by the reactive force of the cleaning fluid itself.

#### APPLICATIONS

- Cleaning of food industry machinery interiors
- Cleaning of pharmaceutical industry pipework



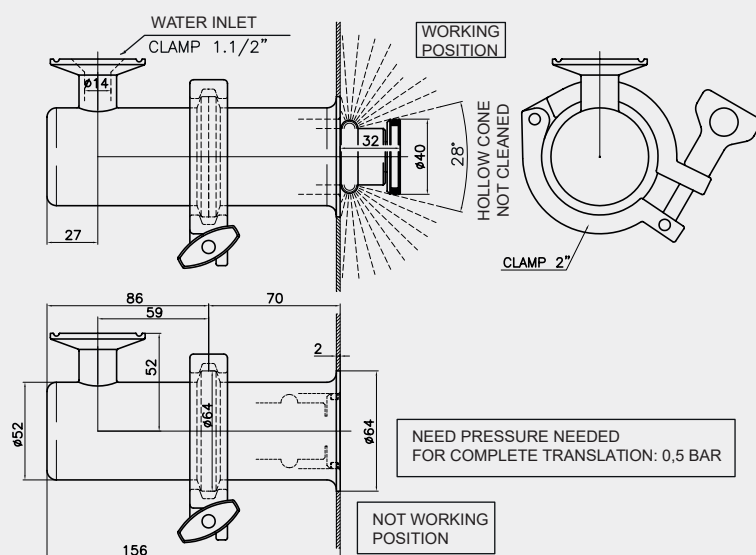
**RT111-AA**

#### TECHNICAL SPECIFICATIONS

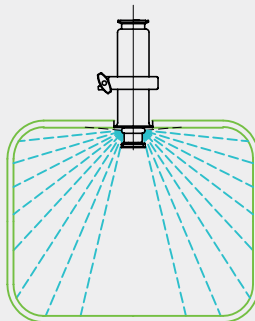
##### Flow rate by pressure

FLOW RATE	l/min	10	15	19	22	24	27	29	31
PRESSURE	bar	1	2	3	4	5	6	7	8
WATER INLET	1 1/2 TRI-CLAMP								
MAX TEMPERATURE	90 °C								
O.RING	EPDM								
BUSHES	PEEK								
MATERIAL	AISI 316								
INLET HOLE	Ø45 mm								
WEIGHT	2.4 kg								

CE | Atex  II 1 GD



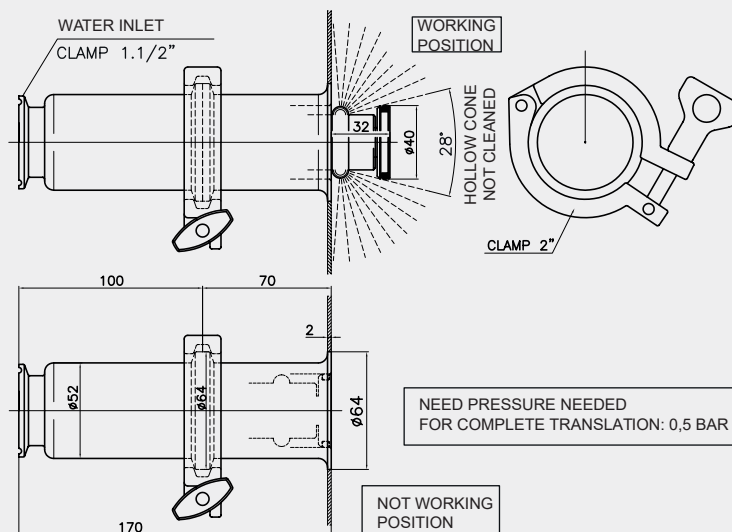
- Cleaning of food industry machinery interiors
- Cleaning of pharmaceutical industry pipework



RT111-AB

### Flow rate by pressure

FLOW RATE	<b>l/min</b>	10	15	19	22	24	27	29	31
PRESSURE	<b>bar</b>	1	2	3	4	5	6	7	8
WATER INLET	1"½ TRI-CLAMP								
MAX TEMPERATURE	90 °C								
O.RING	EPDM								
BUSHES	PEEK								
MATERIAL	AISI 316								
INLET HOLE	Ø45 mm								
WEIGHT	2.4 kg								

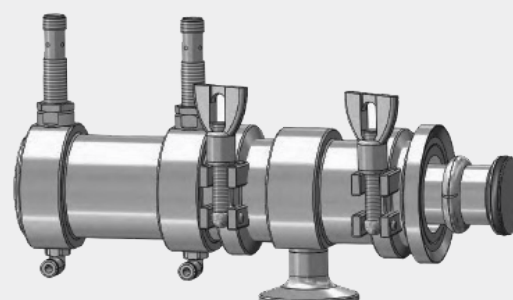
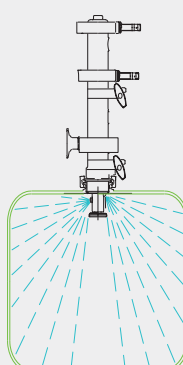


## Acquamotor (water-driven)

**RT111-P** is a cleaning head whose movement is driven by the reactive force of the cleaning fluid itself.

### APPLICATIONS

- Cleaning of food industry machinery interiors
- Cleaning of pharmaceutical industry pipework



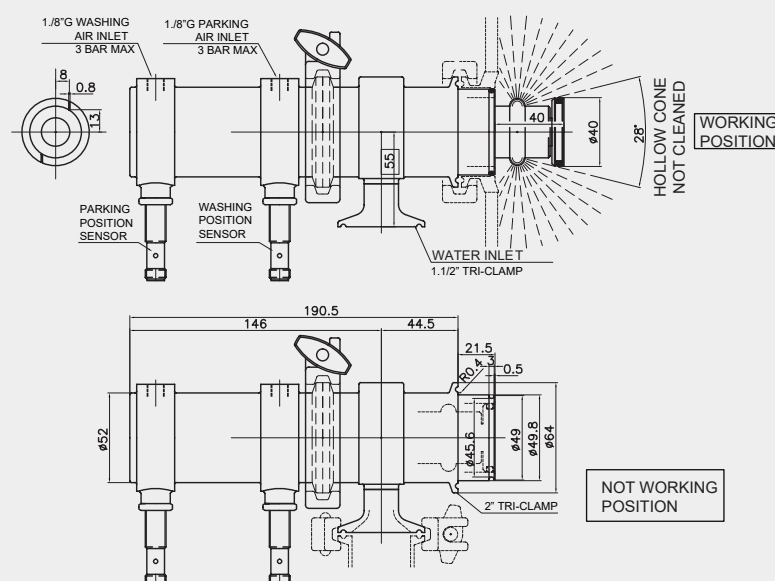
**RT111-P**

### TECHNICAL SPECIFICATIONS

#### Flow rate by pressure

FLOW RATE	l/min	10	15	19	22	24	27	29	31
PRESSURE	bar	1	2	3	4	5	6	7	8
WATER INLET	1 1/2 TRI-CLAMP								
MAX TEMPERATURE	90 °C								
O.RING	EPDM								
BUSHES	PEEK								
MATERIAL	AISI 316								
INLET HOLE	Ø45 mm								
WEIGHT	2.4 kg								

CE | Atex | Ex II 1 GD



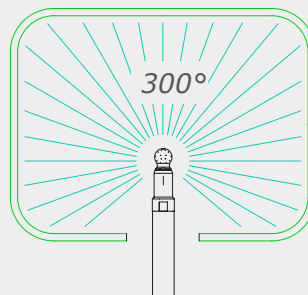


*Acquamotor (water-driven)*

**RT105-P** is a rotating cleaning head whose rotation is generated by the force of the liquid. The innovation of this cleaning head is the speed control system. The speed is kept constant, even when the flow rate/pressure varies.

### APPLICATIONS

- Cleaning of mixers
- Cleaning of tanks
- Cleaning of machinery interiors



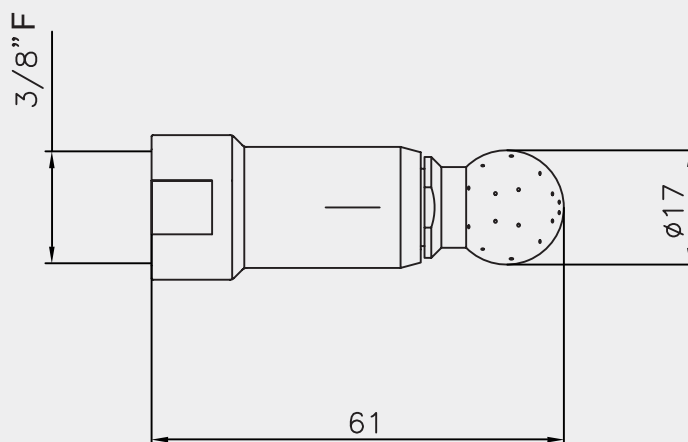
**RT105-P**

### TECHNICAL SPECIFICATIONS

#### Flow rate by pressure

FLOW RATE	l/min	8,2	12,2	14,5	16,5	18,5	20,1	21,8	23,2	24,5	25,9
PRESSURE	bar	1	2	3	4	5	6	7	8	9	10

CE

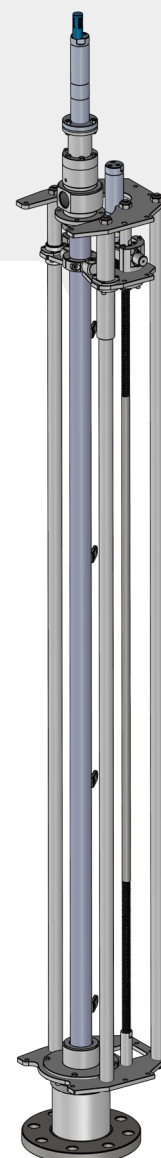


### Linear actuators

**TA0800** is a linear actuator designed to move a cleaning head. It is powered by a pneumatic motor and is set up to be equipped with sensors to control its movement.

#### APPLICATIONS

- Cleaning of chemical industry mixers
- Cleaning of pharmaceutical industry tanks



DESCRIPTION	PNEUMATIC SINGLE-SCREW LINEAR ACTUATOR
-------------	--

Composed of:	LINEAR ACTUATOR MOD. TA0800
--------------	-----------------------------

HEAD USED	XC061	XC068	XC060
-----------	-------	-------	-------

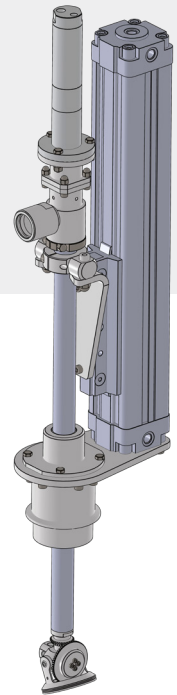
MINIMUM STROKE (mm)	On request
MAXIMUM STROKE (mm)	5700
CERTIFICATION	CE   Atex Ex II 1 GD
SET UP FOR SENSORS	YES
SET UP FOR VACUUM	On request
MOUNTING FLANGE	DN80 PN10/PN16 - DN100 PN10/PN16
BRAKE	NO
	Max angle from vertical $\alpha^\circ$
800 to 1000 mm	30°
1001 to 2000 mm	15°
2001 to 3000 mm	10°
3001 to 4200 mm	5°
4201 to 5700 mm	3°

### Linear actuators

**TA-CM** is a linear actuator designed to move a cleaning head. Pneumatically driven.

#### APPLICATIONS

- Cleaning of machinery interiors
- Cleaning of mixers
- Cleaning of reactors
- Cleaning of high-shear emulsifiers



#### DESCRIPTION

*PNEUMATIC JACK LINEAR ACTUATOR*

#### Composed of:

*PNEUMATIC JACK*

#### HEAD USED

*XC060-XC061-XC068-XT076*

#### MINIMUM STROKE (mm)

*On request*

#### MAXIMUM STROKE (mm)

*1000*

#### CERTIFICATION

CE | Atex Ex II 1 GD

#### SET UP FOR SENSORS

*YES*

#### SET UP FOR VACUUM

*On request*

#### MOUNTING FLANGE

*On request*

#### BRAKE

*NO*

### Linear actuators

**TA-FE** is a linear actuator designed to move a cleaning head. Pneumatically driven.

#### APPLICATIONS

- Cleaning of chemical industry mixers
- Cleaning of pharmaceutical industry tanks



DESCRIPTION	PNEUMATIC JACK LINEAR ACTUATOR
-------------	--------------------------------

Composed of:	ATEX PNEUMATIC JACK
--------------	---------------------

HEAD USED	XC060-XC061-XC068-XT076
-----------	-------------------------

MINIMUM STROKE (mm)	On request
MAXIMUM STROKE (mm)	1000
CERTIFICATION	CE   Atex  II 2G - II 3D
SET UP FOR SENSORS	YES
SET UP FOR VACUUM	On request
MOUNTING FLANGE	DN80 PN10/PN16 - DN100 PN10/PN16
BRAKE	NO

### Linear actuators

**TA-NG** is a linear actuator designed to move a cleaning head. Pneumatically driven.

#### APPLICATIONS

- Cleaning of chemical industry mixers
- Cleaning of pharmaceutical industry tanks

#### DESCRIPTION

*PNEUMATIC JACK LINEAR ACTUATOR*

#### Composed of:

*PNEUMATIC JACK WITH BRAKE*

#### HEAD USED

*XC060-XC061-XC068*

#### MINIMUM STROKE (mm)

*On request*

#### MAXIMUM STROKE (mm)

*1000*

#### CERTIFICATION



#### SET UP FOR SENSORS

*YES*

#### SET UP FOR VACUUM

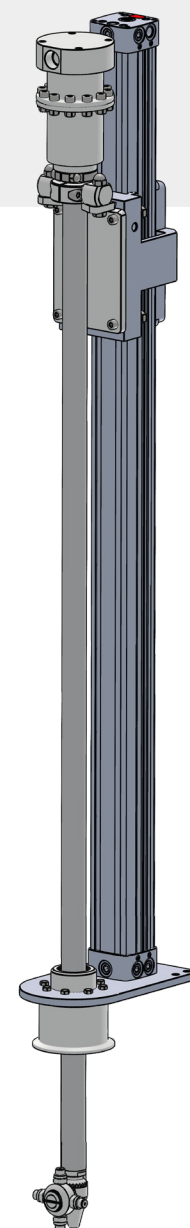
*On request*

#### MOUNTING FLANGE

*On request*

#### BRAKE

*YES*



### Linear actuators

**TA060** is a linear actuator designed to move a cleaning head. Pneumatically driven.

#### APPLICATIONS

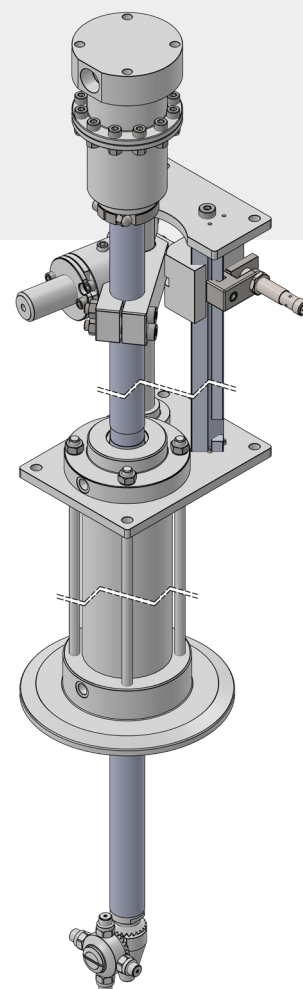
- Cleaning of chemical industry mixers
- Cleaning of pharmaceutical industry tanks

DESCRIPTION	PNEUMATIC PISTON LINEAR ACTUATOR
-------------	----------------------------------

Composed of:	SINGLE-TUBE PNEUMATIC PISTON
--------------	------------------------------

HEAD USED	XC060-XC061-XC068
-----------	-------------------

MINIMUM STROKE (mm)	On request
MAXIMUM STROKE (mm)	800
CERTIFICATION	CE   Atex  II 1 GD
SET UP FOR SENSORS	YES
SET UP FOR VACUUM	On request
MOUNTING FLANGE	On request
BRAKE	YES

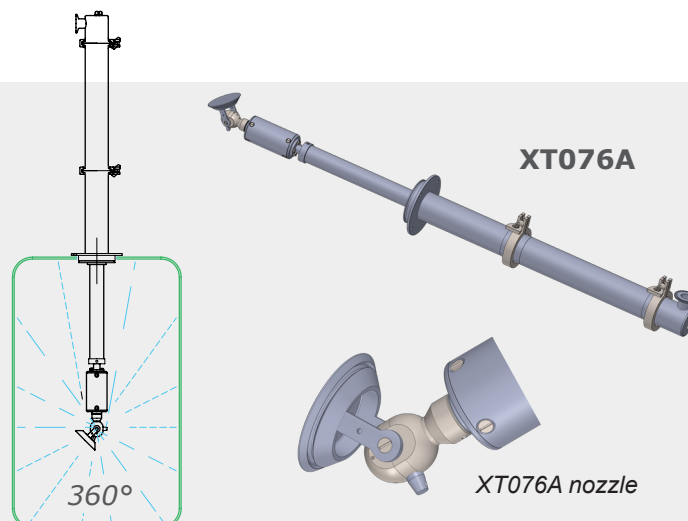


### Acquamotor (water-driven)

**XT076A** is a retractable water-driven cleaning head (acquamotor), ideal for cleaning at low pressure and high flow rate (10 bar - 100 l/min).

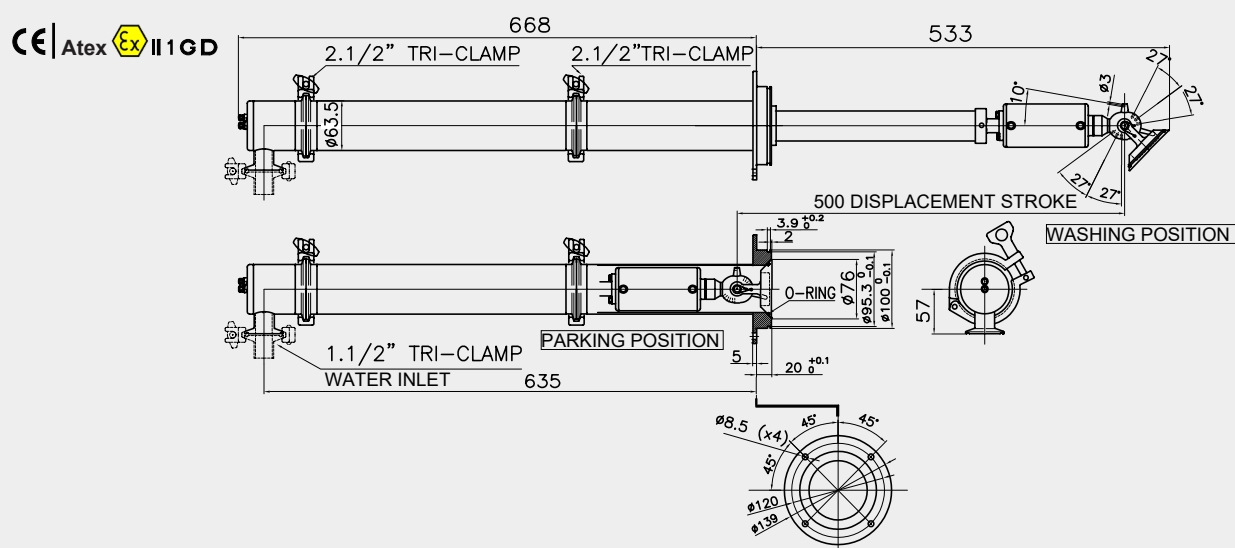
#### APPLICATIONS

- Cleaning of food industry mixers
- Cleaning of chemical industry reactors
- Cleaning of food industry atomisers



#### TECHNICAL SPECIFICATIONS

FLOW RATE	50 - 100 l/min
PRESSURE	3 - 10 bar
MAX TEMPERATURE	90 °C
NOZZLES	integrated
INLET CONNECTION	1/2" TRI-CLAMP
MATERIALS	Gaskets: EPDM - Bushes: PEEK AISI 316
ROTATION SPEED	12-27 rpm
SPRAY COVERAGE ANGLE	360°
WEIGHT	8.3 kg

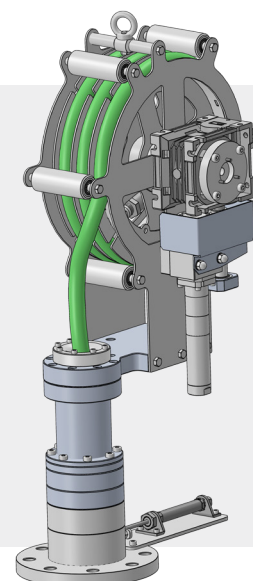


## Linear actuators

**TA0500** is a linear actuator with hose reel. Movement is driven by pneumatic motor.

### FEATURES

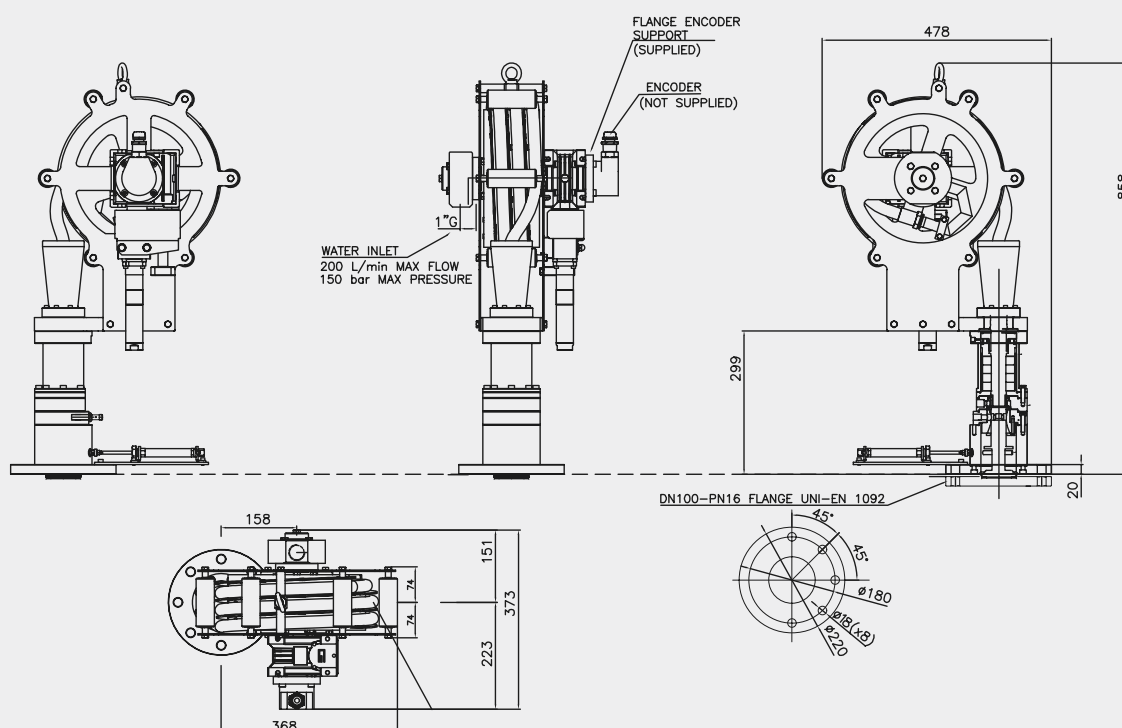
- Reduced dimensions
- Adjustable cleaning height
- Hose extension up to 2.5 m
- Drying of cleaning hose



**TA0500**

### TECHNICAL SPECIFICATIONS

MAX AIR PRESSURE	6 bar
AIR INLET	Ø8 hose
MATERIAL	stainless steel
MOUNTING FLANGE	DN100 PN16
TRAVEL RANGE	as requested by the customer
TRAVEL SPEED	~0.7 m/min at 1 bar to ~1.7 m/min at 6 bar
WEIGHT	~50 kg



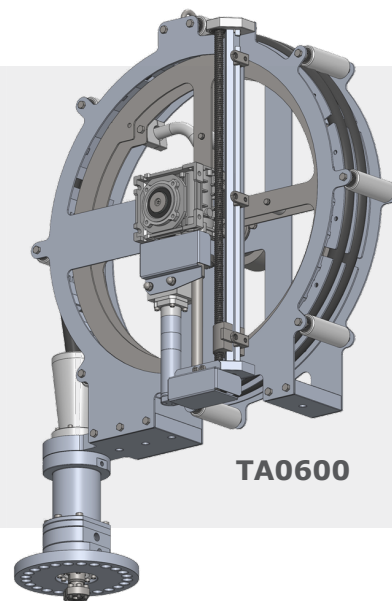


## Linear actuators

**TA0600** is a linear actuator with hose reel. Movement is driven by pneumatic motor.

### FEATURES

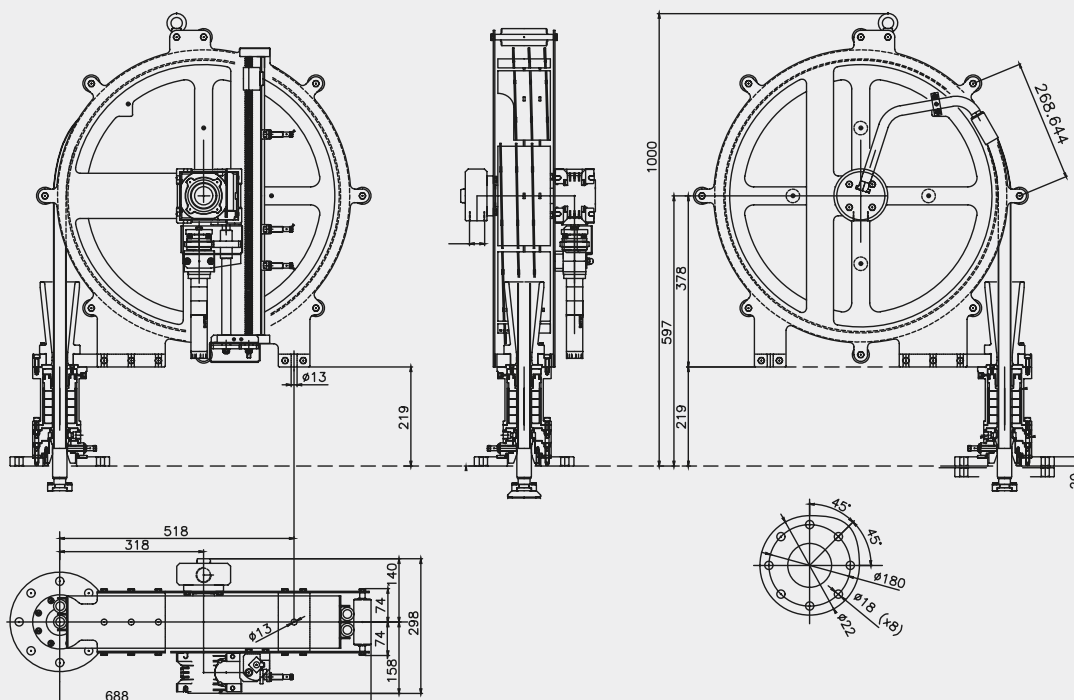
- Reduced dimensions 800 mm
- Multiple cleaning positions
- Hose length up to 4 metres
- Drying of cleaning hose



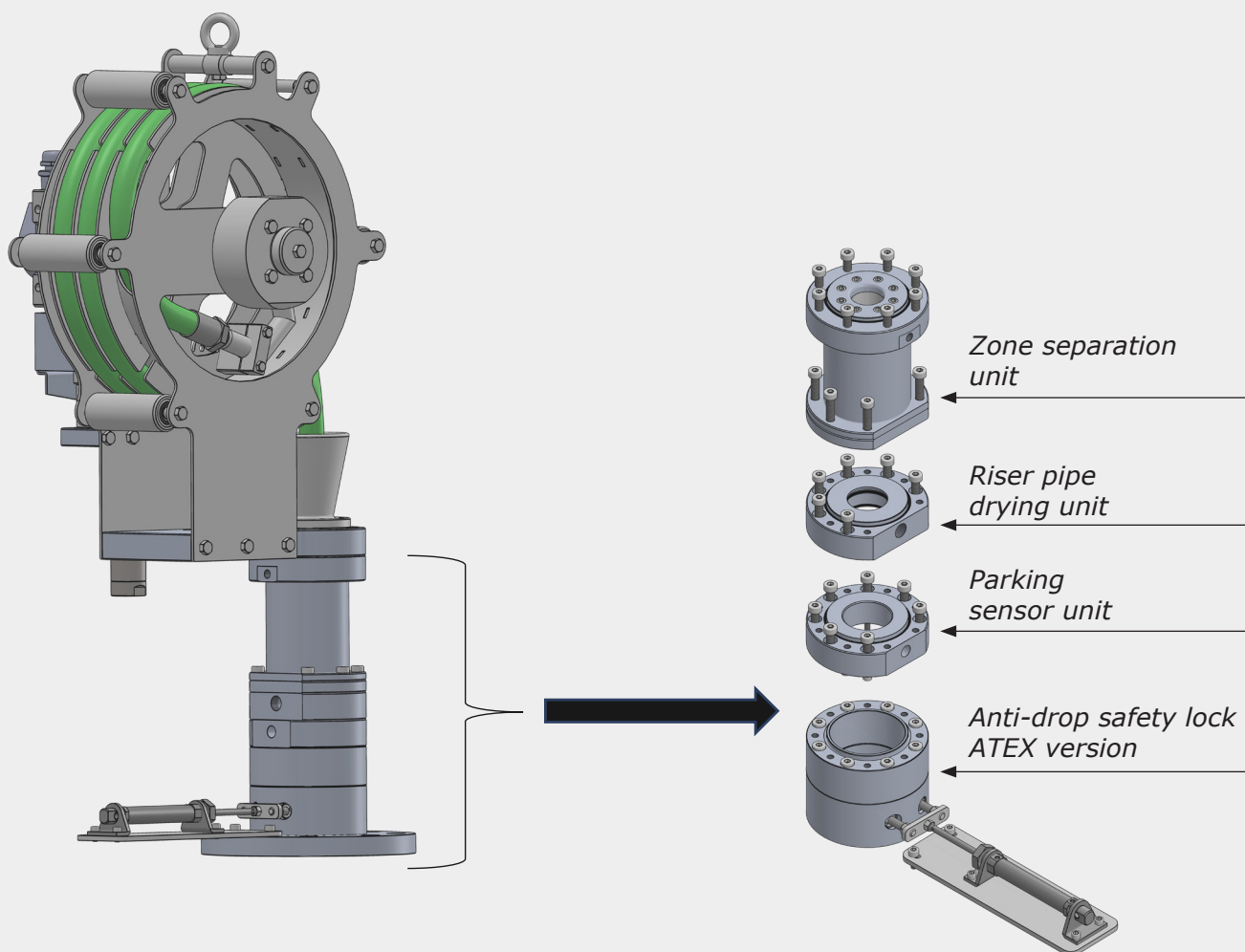
TA0600

### TECHNICAL SPECIFICATIONS

MAX AIR PRESSURE	6 bar
AIR INLET	Ø8 hose
MATERIAL	stainless steel
MOUNTING FLANGE	DN100 PN16
TRAVEL RANGE	as requested by the customer
TRAVEL SPEED	~1.5 m/min at 1 bar to ~3.5 m/min at 6 bar
WEIGHT	~65 kg

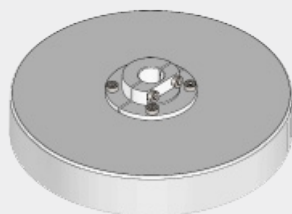


## TA0500 ACCESSORIES

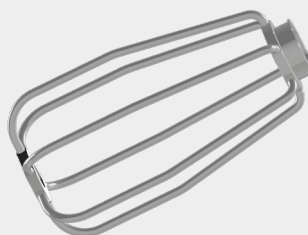


## ACCESSORIES

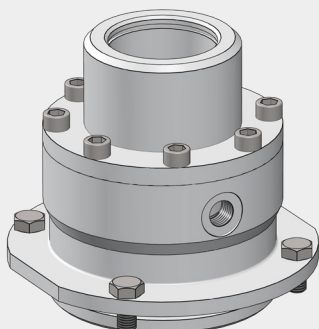
*IBC cover*



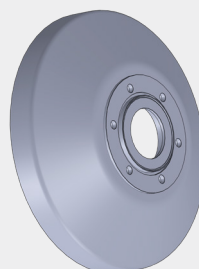
*Protection cage for RW Series*



*Flange unit for vacuum*



*Parabolic nozzle holder protection for FV Series*







**BOLONDI CLEANING HEADS SNC**

Via Volta, 4

42027 Montecchio Emilia

Reggio Emilia - ITALY

For more information, visit [www.bolondi.com](http://www.bolondi.com)

Write to us or call us for custom solutions:

phone +39 0522 864434

[bolondi@bolondi.com](mailto:bolondi@bolondi.com)