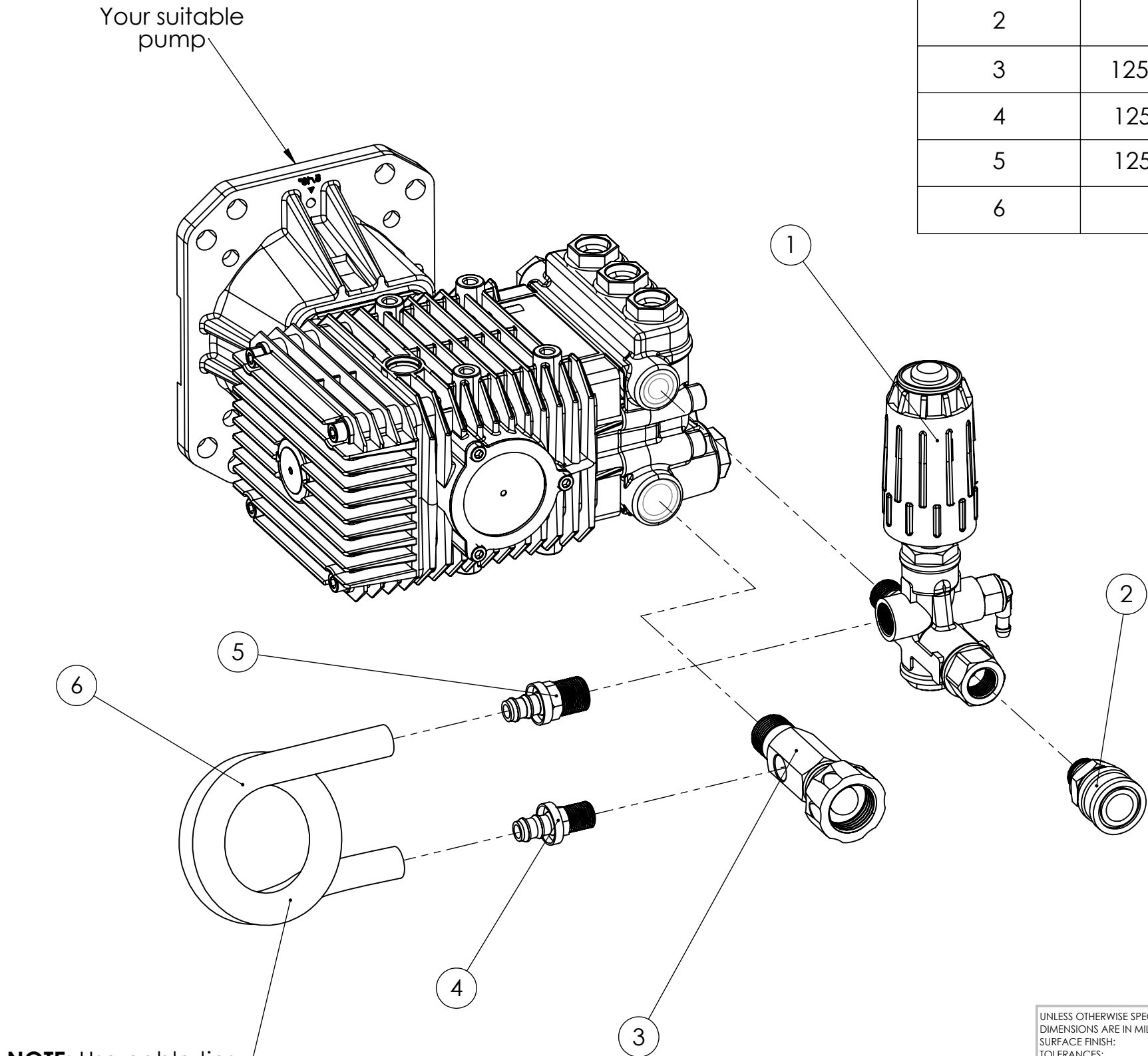


ITEM NO.	PART NUMBER	DESCRIPTION	QTY.
1	125 85.300.037	VRT3 Unloader c/w 3/8 nipple & 3/8M thermal dump valve	1
2	-	Coupler 3/8 BSPM	1
3	125 85.300.056	Water Inlet Filter	1
4	125 85.710.046	Hose barb 1/4 MNPT	1
5	125 85.804.024	Hose barb 3/8 M Bsp	1
6	-	By Pass hose 3/8 36 inch	1



**NOTE:** Use cable ties to bind the hose in place

### **Kit Assembly Guide**

Please follow the steps below to correctly assemble your kit -

1. Connect **ITEM 1** to the pump.
2. Screw **ITEM 2** to **ITEM 1**.
3. Screw **ITEM 3** to the pump.
4. Screw **ITEM 4** to **ITEM 3** and **ITEM 5** to **ITEM 1** respectively.
5. Connect each end of **ITEM 6** to **ITEMS 4 & 5**.
6. Make sure all the connections are tight and secure.

UNLESS OTHERWISE SPECIFIED:  
DIMENSIONS ARE IN MILLIMETERS  
SURFACE FINISH:  
TOLERANCES:  
LINEAR:  
ANGULAR:

FINISH:

DEBURR AND  
BREAK SHARP  
EDGES



	NAME	SIGNATURE	DATE	REVISIONS
DRAWN	Kishwar A		17/11/22	
CHK'D	Dominic R			
APPVD	Daryl B			
MFG				
Q.A				

WEIGHT:

PART NO. / PRODUCT

125 85.400.118  
External Unloader Replacement Kit

DESCRIPTION

Kit assembly guide

A3

SCALE:1:10

SHEET 1 OF 1