

# Expansion Valve



**Warning:** Outlet of water **MUST** be directed away from people or animals.

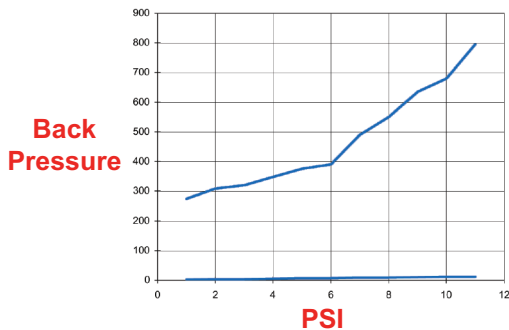
## FEATURES

- Replaces a burst disc and can be used repeatedly
- To be used on or after the coil to prevent the coil from over-heating to a point of steam explosion
- Valve will stay open until the water/pump is turned off, then will reset
- Designed and manufactured in the USA

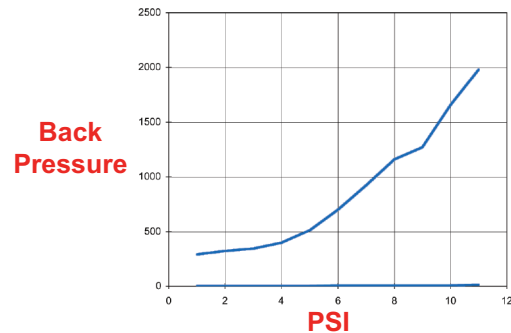
## SPECIFICATIONS

MODEL	100973	100979
Flow Rating	2.0 - 6.0 GPM	
Pressure Rating	6000 PSI	
Outlet	3/8" NPT-M	1/2" NPT-M
Max. Temperature	310° F	
Materials	303 Stainless Steel body, 316 SS Ball	

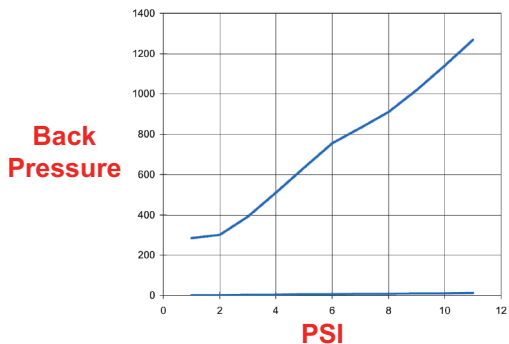
**Expansion Valve at 4100 PSI  
Slowly Increasing PSI**



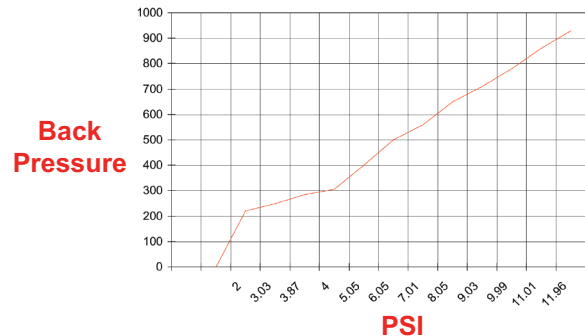
**Expansion Valve at 4100 PSI  
Full Flow**



**Expansion Valve at 4300 PSI**



**Expansion Valve at 3000 PSI  
Slowly Increasing PSI**



General Pump  
is a member of  
the Interpump Group



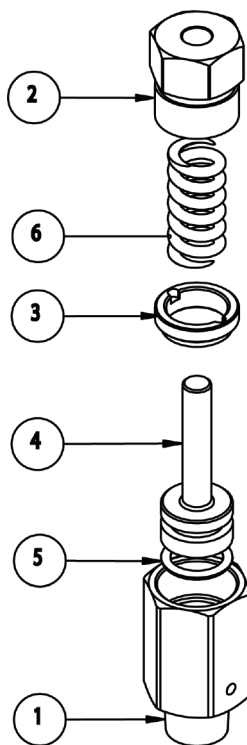
Ref 300755 Rev. B  
12-12



# Expansion Valve

**GENERAL PUMP***A member of the Interpump Group*

## PARTS LIST



Pos.	Part No.	Description	QTY
1	520296	Body, Expansion Valve	1
2	520288	SRV End Cap	1
3	520295	Piston Stop Ring, Exp. Valve	1
4	103099	Assembly, Piston, Exp. Valve	1
5	31352-113	O-ring, Viton, .548 x .103CS	1
6	720059	Spring, 302 SS	1

Ref 300755 Rev. B  
12-12