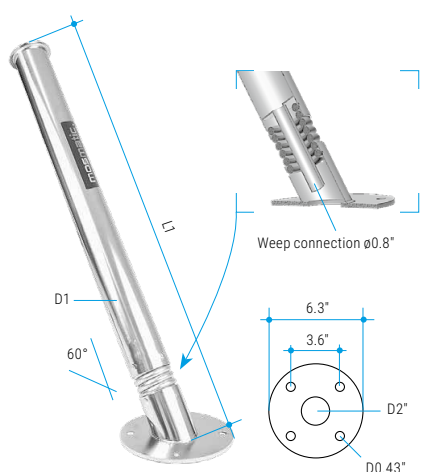


WAND HOLDER

- ✓ High-quality workmanship
- ✓ Polished stainless steel
- ✓ Solid construction



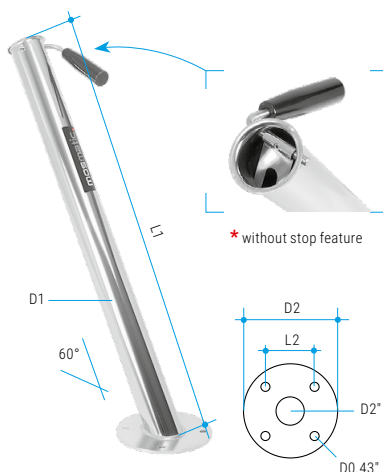
Only Mosmatic offers you such an extensive variety wand holders. Solid construction and high quality materials enhance their function and appearance, which increases value to your wash bay.



Wand holder

spring model, floor mounted, with weep connection

| Part No. | L1 | D1 | Weight |
|----------|-------|------|---------|
| 29.097 | 27.8" | 2.4" | 6.8 lbs |
| 29.121 | 33.7" | 2.4" | 8.4 lbs |

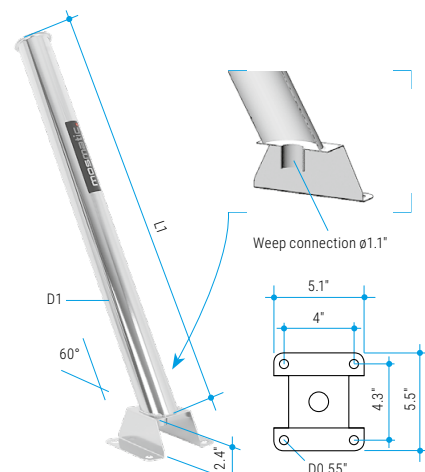


Wand holder

with stop feature, floor mounted

| Part No. | D1 | D2 | L1 | L2 | Weight |
|----------|------|------|-------|------|---------|
| 29.028 | 2.4" | 6.3" | 29.5" | 3.6" | 6.0 lbs |
| 29.113* | 2.4" | 6.3" | 29.1" | 3.6" | 5.1 lbs |
| 29.127* | 3.9" | 7.9" | 28.5" | 4.7" | 7.9 lbs |

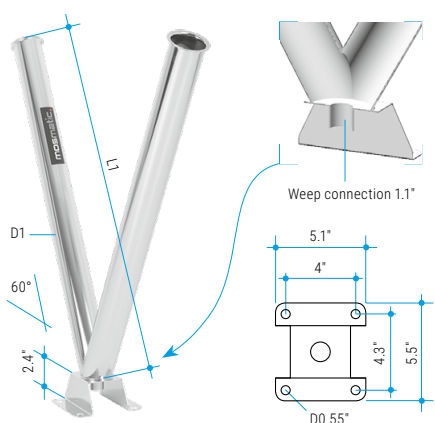
29.975 Stop feature replacement set



Wand holder

with weep connection, floor mounted

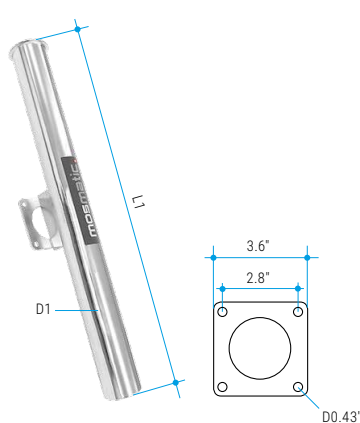
| Part No. | L1 | D1 | Weight |
|----------|-----|------|---------|
| 29.115 | 29" | 2.4" | 4.4 lbs |



Dual wand holder

with weep connection, floor mounted

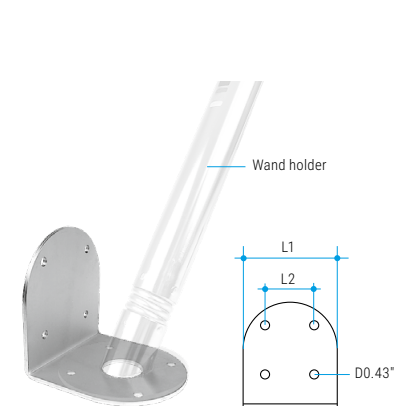
| Part No. | L1 | D1 | Weight |
|----------|-----|------|---------|
| 29.124 | 29" | 2.4" | 8.8 lbs |



Wand holder

wall mounted

| Part No. | L1 | D1 | Weight |
|----------|-------|------|---------|
| 29.083 | 23.2" | 2.4" | 3.7 lbs |
| 29.128 | 8" | 2.4" | 2 lbs |



Wand holder bracket

for wall mounting 29.097 / 29.028 / 29.113 / 29.121

| Part No. | L1 | L2 | Weight |
|----------|------|------|---------|
| 29.099 | 6.3" | 3.6" | 4.2 lbs |

Legend

M... = metric thrust, ..M = male, F = female, G = gas pipe thrust, QV = quick connects, SV = profile ring fitting
D = diameter, k = conical, L = length, NW = nominal width, SW = wrench size, IN = media input, OUT = media output, RS = basic position