



**15/25 Gallon
Lawn Sprayer
Operations/Parts Manual**



Assembly/Parts list for

Model SLO-11-015A-BE 15 Gal. Spot Sprayer

Model SLO-11-025A-BE 25 Gal. Spot Sprayer

Rev 3 Dec. 2017

INTRODUCTION

Your sprayer has been manufactured to provide years of dependable and efficient use. Proper operation and maintenance will ensure long satisfactory service. Study this manual carefully to become familiar with the operation and maintenance instructions.

Keep your manual in a safe, convenient place for future reference. Always mention the model and part number in any correspondence. To ensure correct parts service, be sure to use the part number and description when ordering.

ASSEMBLY

- 1.) Remove sprayer from carton and place on a flat surface.
- 2.) Slide wheels onto axels. Place one axel push-nut over the end of the axel and hit lightly with a hammer until push-nut is secure. Repeat with other side of axel.
- 3.) Attach the tongue to the unit with bolts previously installed. Unscrew the 5/16" nuts and insert tongue onto bolts, replace the nuts and tighten securely. Bolt the upper and lower hitch to the tongue with (2) 5/16" bolts and nuts provided. The hitch can be reversed to raise or lower the tongue to better fit your lawn tractor height.
- 4.) Attach the boom mount uprights to the back of the frame with (4) 5/16" bolts and nuts provided. Attach the pre-assembled boom to the boom uprights with the (2) 5/16" bolts and nuts provided. Tighten securely. Thread the hose fitting from the boom onto the garden hose valve located on the pump manifold.
- 5.) Screw the gun clips to the side of the tank with the (2) 10-24 screws provided. Place the hose clamp over the spray gun hose and push the hose onto the barbed fitting on the pump manifold. Using a plier, squeeze the clamp until secure.
- 6.) Slide the "T" end of the cap tether through the hole located on the top of the tank and through the hole located in the top of the cap. Place the tank drain cap tether over the threads of the tank drain opening and tighten the cap to the tank.
- 7.) Plug the wiring harness to the pump.

OPERATION

Operating power is obtained from a 12-volt direct source. Be sure to connect the red to the positive (+) source and attach the black to the negative (-) source.

IMPORTANT: Before spraying chemicals, fill the tank half full of plain water to allow familiarization with the sprayer and to prevent waste of expensive chemicals.

SPRAYER MAINTENANCE

A sprayer is a carefully designed and built machine that should provide many years of reliable service if properly cared for. The main rule in caring for any sprayer is: KEEP IT CLEAN. Neglect costs dollars in repairs, wasted spray material and premature replacement of the sprayer.

CLEANING & STORAGE

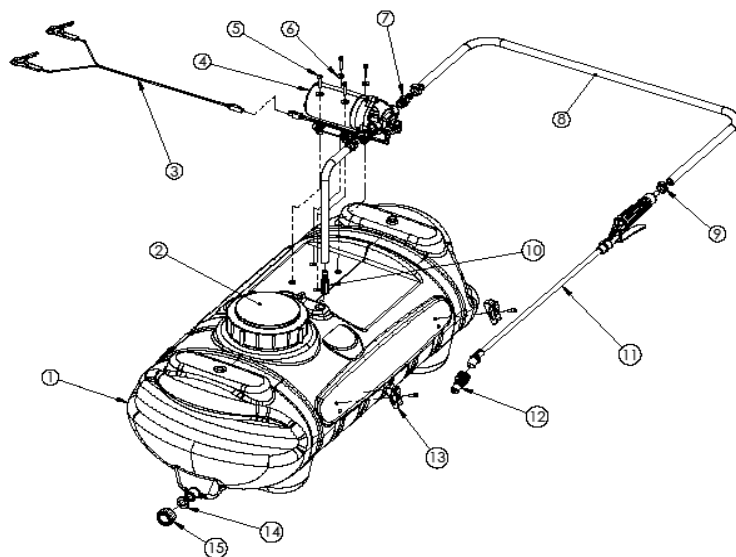
Most spray materials are highly corrosive. **The most important aspect of long dependable service from the sprayer is a thorough cleaning immediately following each use.** In addition, the residue of one type of chemical could cause an undesirable effect when a different chemical is used for a different purpose.

The most effective cleaning method is to pump several rinses of clean water through the tank, pump, hoses, boom, spray gun, etc. A neutralizing agent such as a solution of Nutra-Sol, a detergent or household ammonia as

recommended by the chemical manufacturer can assist in removal of a persistent chemical. When the system is thoroughly cleaned drain the tank, suction line, pump, hoses, etc.

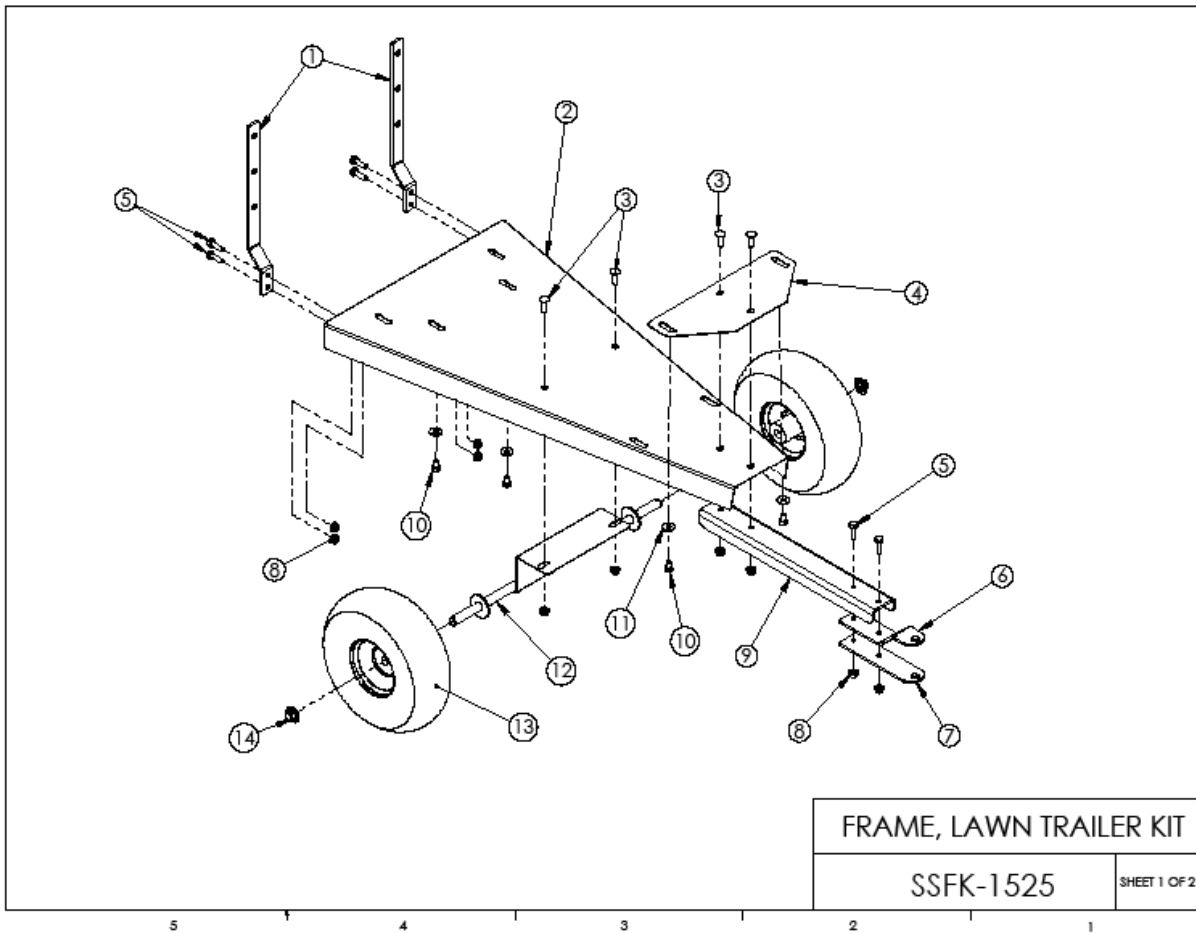
The following steps should be followed for the maintenance and storage of your sprayer.

- 1.) Wash and flush out sprayer after completion of each phase of your program. Flush out sprayer when changing chemicals if there is a possibility of the chemicals being incompatible. Use of a detergent is advisable if the chemical manufacturer does not make specific cleaning recommendations. Flush system completely, including nozzles. Never use metal objects to open clogged nozzles.
- 2.) Clean sprayer thoroughly before storing at the end of the spraying season. Permanent type anti-freeze added to the final rinse will leave a rust inhibiting film in parts of the sprayer.



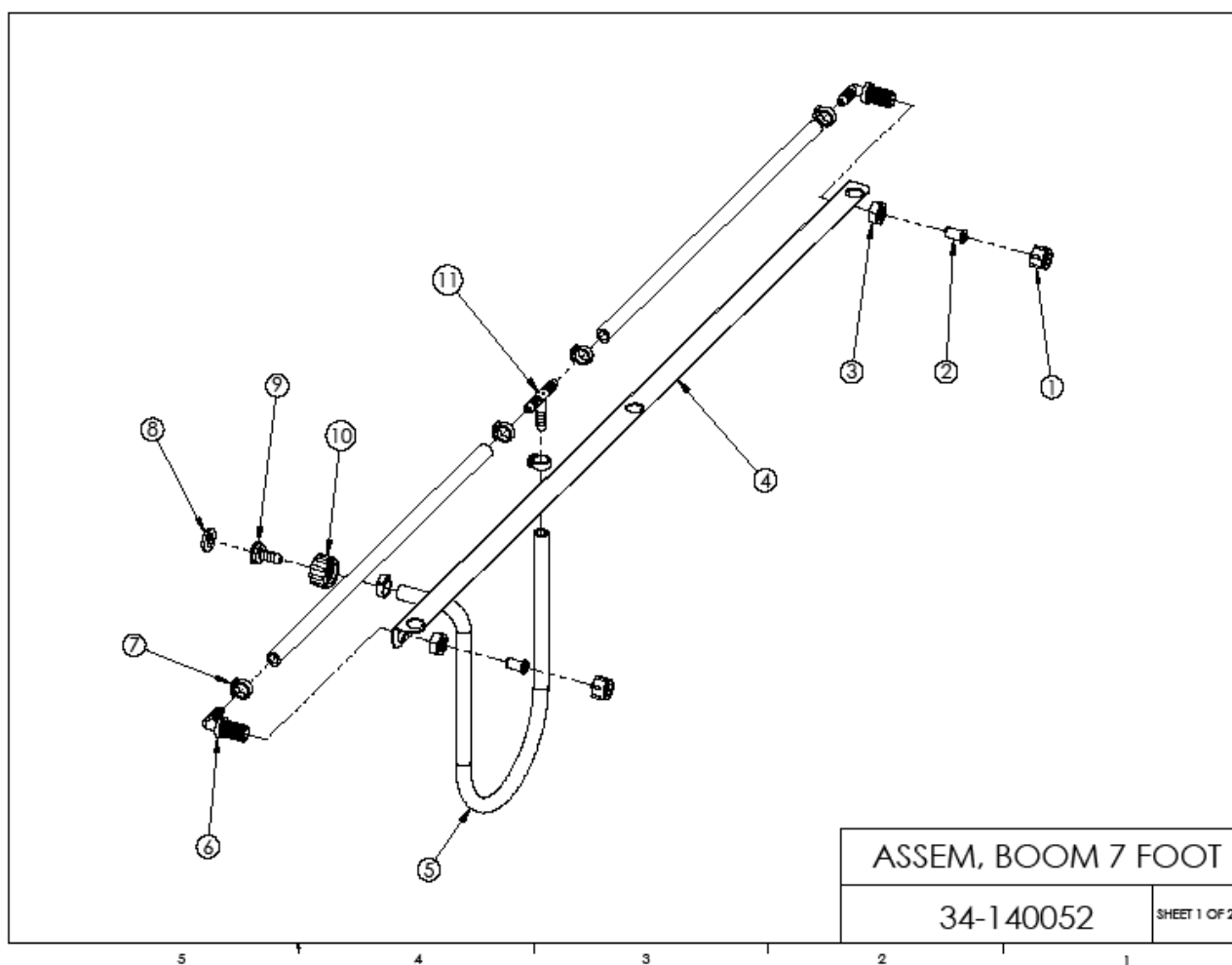
AgriEase 15/25 Gallon Spot Sprayer Parts List

Ref	Qty	Part No.	Description
1	1	33-103231	Tank, 15 gallon
	1	33-103230	Tank, 25 gallon
2	1	TL-6B	Lid, Tank
3	1	33-103234	Harness, Wire, SS,
4	1	33-103208	Pump, Delavan, 1 GPM, 15 gallon
	1	33-103209	Pump, Delavan, 2 GPM, 25 gallon
5	4	33-103126	Screw, Machine, 10-24 x 5/8, 15 gall
	4	33-103127	Screw, Machine, 10-24 x 1", 1.8 & 2.0 GPM pumps
6	4	33-103131	Washer #10, 1.8 & 2.0 GPM pumps only
7	2	A38	Fitting, 3/8"MNPT x 3/8"HB. 1.8 & 2.0 GPM pumps
8	15 ft	3204-1407	Hose, rubber, 3/8"
9	3	SHC-F	Clamp, hose
10	1	33-103121	Strainer, Inlet
11	1	SG-4507F	Wand, with filter
12	1	SG-45ASSY-18	Nozzle, Assembly
13	1	GC-100-KIT	Clip, Gun (Pair)
14	1	W406-V	Washer, Garden Hose
15	1	3N34	Cap, Garden Hose
	18"	3204-1407	Hose, rubber, 3/8" X 18" Inlet to pump
	1	SS-MANUAL-MM	Manual, (not shown)



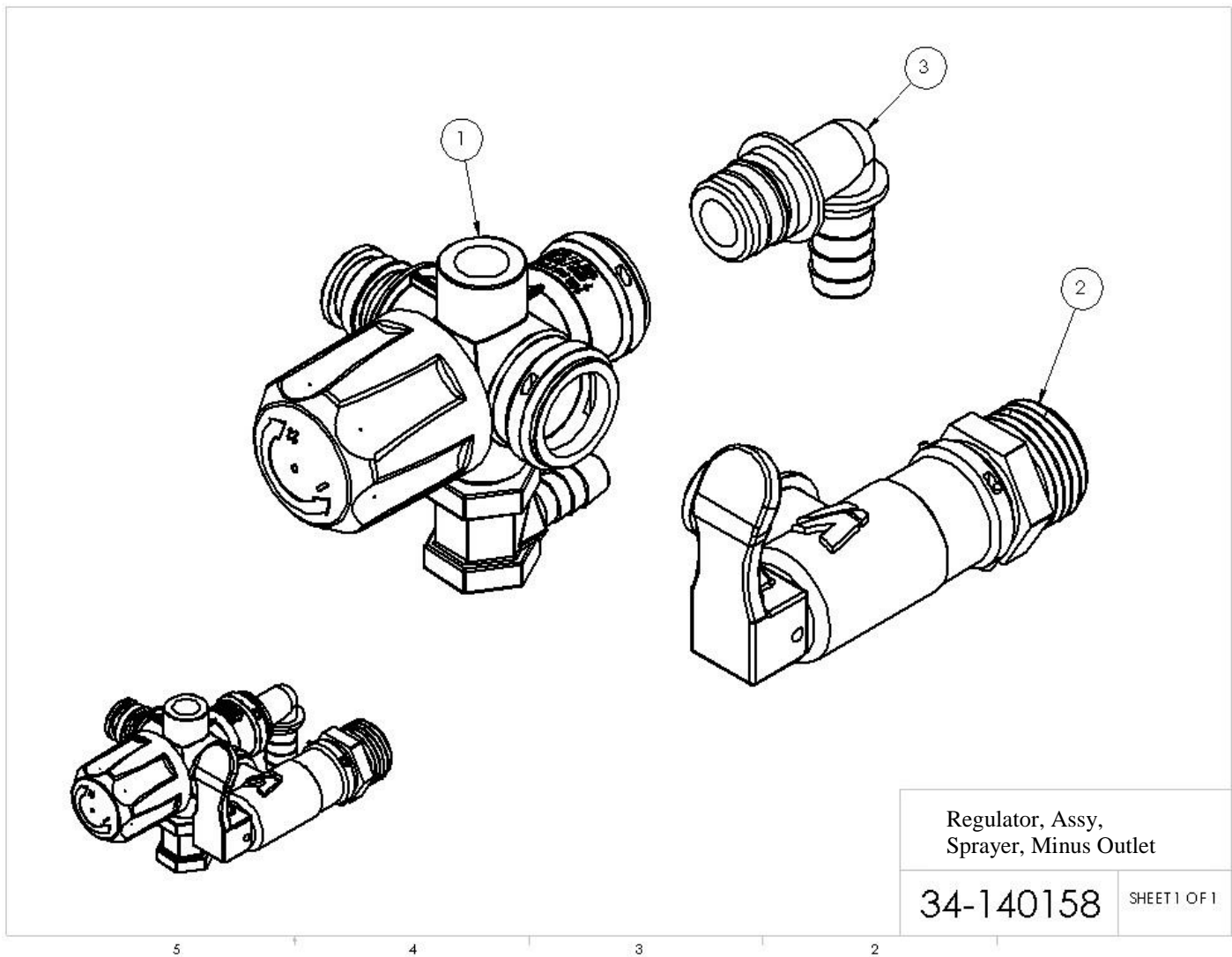
Parts List for trailer

Item #	Part Number	Qty	Description
1	31-100119	2	Boom Mount
2	31-100116	1	Frame
3	33-100112	4	Carriage bolt, 5/16-18 x 1"
4	31-100115	1	Front tank mount(For 25 gallon tank)
5	33-100116	6	Bolt, 5/16-18 x 1"
6	31-100121	1	Top Hitch plate
7	31-100138	1	Bottom hitch plate
8	33-100113	10	Nut, serrated, 5/16"
9	31-100114	1	Tongue, 15&25 gallon sprayer
10	33-100114	4	Bolt, 5/16-18 x 1"
11	33-100115	4	Washer, 5/16
12	32-100019	1	Axel, 15&25 gallon sprayer
13	TWA410/350-4	2	Tire Assy., 10"
14	PW-625019-50H	2	Push nut



Boom Assembly Parts List

Item #	Part Number	Qty	Description
1	8027	2	Nozzle Nut
2	NS-50	2	Nozzle strainer, 50 mesh
3	B12	2	Nozzle body retaining nut
4	31-100120	1	Boom, 7' (2m)
5	3204-1407	1	Center hose, rubber, 3/8" x 38" long
		2	Nozzle hose, rubber, 3/8" x 19" long
6	NTL38-C	2	Nozzle body, elbow, 3/8" HB
7	SHC-F	6	Snapper hose clamp "F"
8	W406V	1	Garden hose washer
9	C38	1	Flat seat 3/8" hose barb
10	B34	1	Knurled garden hose swivel nut
11	T38	1	Tee, 3/8" HB



Manifold Parts List

Item #	Part Number	Qty	Description
1	34-140118	1	Regulator, Assy, Sprayer
2	34-140161	1	Valve, ON/OFF, Male QA x Female QA Ports
3	EF-QC-EL12	1	Fitting, Elbow, QA x 1/2" HB, Black

15 & 25 GALLON LAWN SPRAYER
Approximate application rate with (2) DF3.0 NOZZLES and
50 Mesh filter

Gauge Pressure PSI	Flow in GPM	Gallons per Acre 40" spacing						
		3 mph	4 mph	5 mph	6 mph	7 mph	8 mph	9 mph
15	.74	36.4	27.2	21.8	18.2	15.6	13.6	12.2
20	.84	42	31.4	25.4	21	18	15.8	14
25	.94	47	35.2	28.2	23.4	20.2	17.6	15.6
30	1.04	51.4	38.6	30.8	25.8	22	19.2	17.2
35	1.12	55.6	41.6	33.4	27.8	23.8	20.8	18.6

This page intentionally left blank