

\* See figure for Link hose path

ITEM NO.	PART NUMBER	DESCRIPTION	QTY.
1	J-Frame		1
2	125 85.402.001	Hose Reel	1
3	145 26.2015.61	QC Male - 3/8 Female	1
4	147 24.0277	Male - Female 90degree Elbow	2
5	145 26.2010.00	3/8 Male - QC Female	1
6	145 26.2023.61	Preattached to hose	1
8	Outlet Hose		1
9	M10 x 1.5 x 30 Bolt		4
10	10mm Flat washer		8
11	M10 x 1.5 Nyloc Nut		4
12	145 26.2010.00	Preattached to pump outlet	1
13	PTFE Tape		1
14	Cable Tie		2

UNLESS OTHERWISE SPECIFIED:  
DIMENSIONS ARE IN MILLIMETERS  
SURFACE FINISH:  
TOLERANCES:  
    LINEAR:  
    ANGULAR:

FINISH:

DEBURR AND  
BREAK SHARP  
EDGES



PART NO. / PRODUCT

125 85.402.091  
Assembled Kit

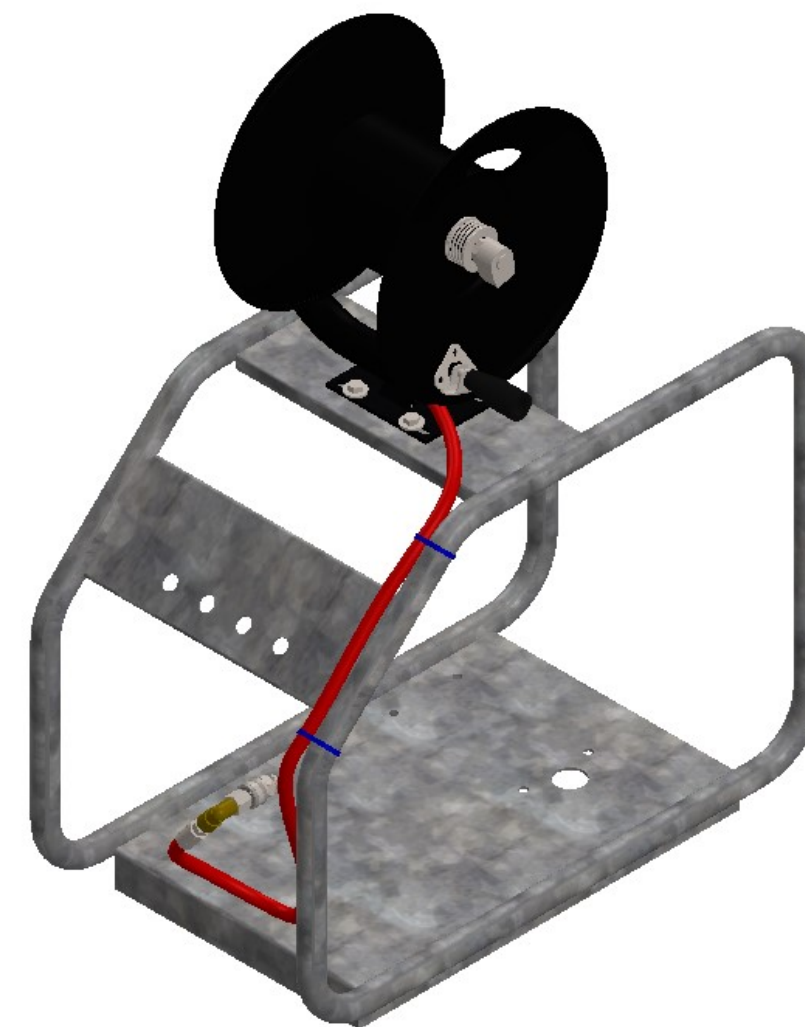
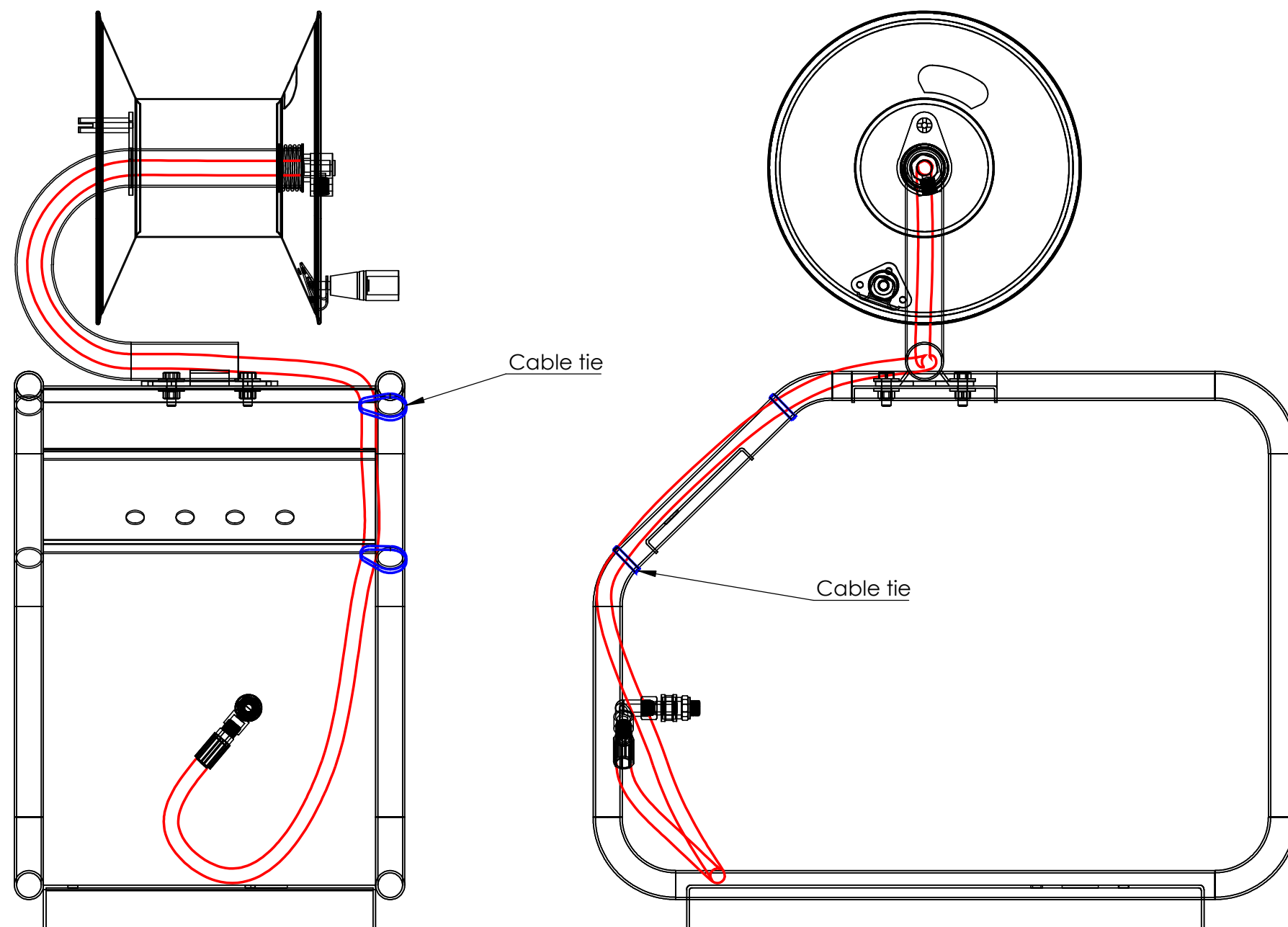
DESCRIPTION	Hose reel kit exploded mounting diagram
-------------	---

A3

WEIGHT:


SCALE:1:5

SHEET 3 OF 6

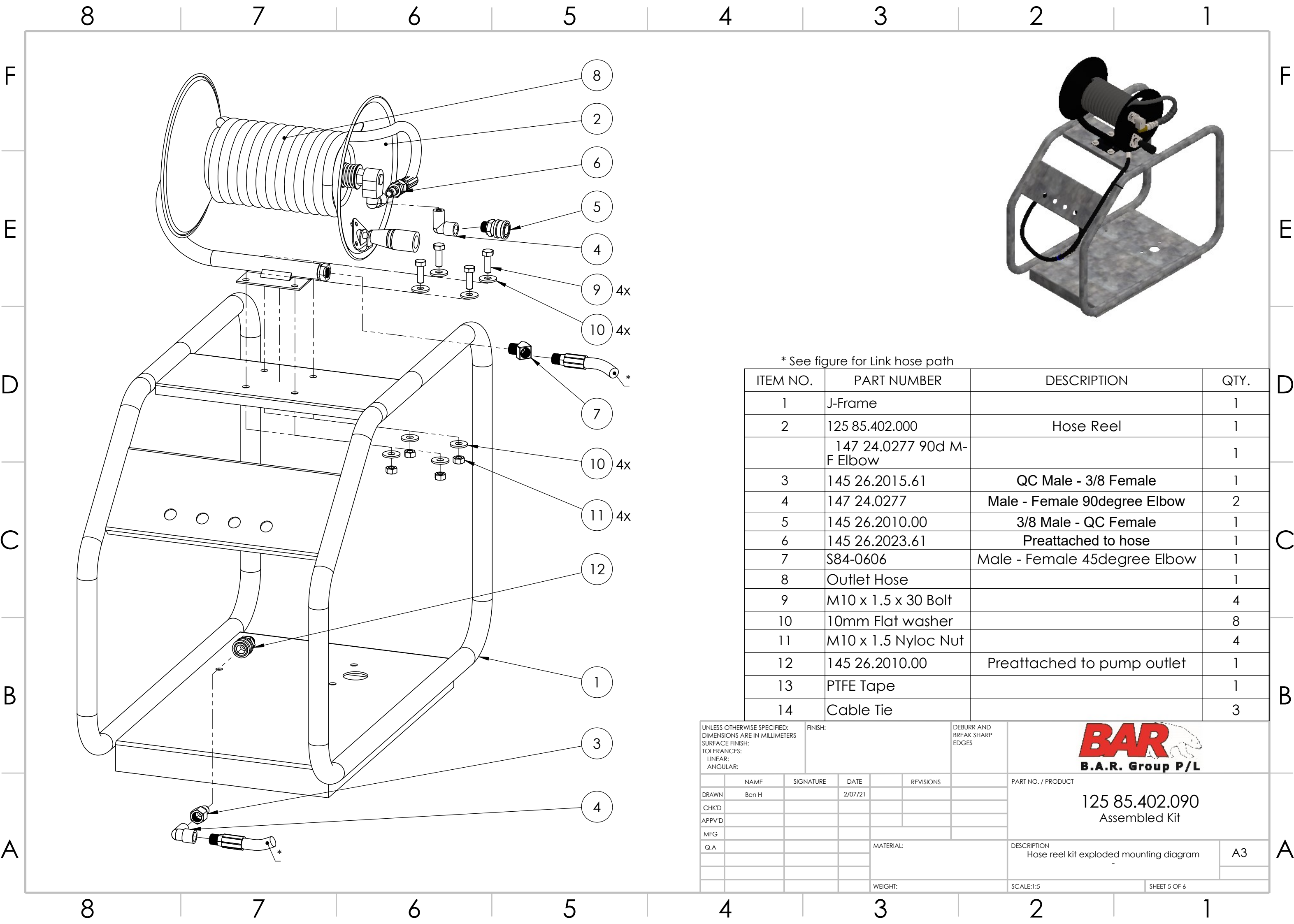


Suggested Hose path highlighted red

Cable tie placement represented by blue bands

UNLESS OTHERWISE SPECIFIED: DIMENSIONS ARE IN MILLIMETERS SURFACE FINISH: TOLERANCES: LINEAR: ANGULAR:				FINISH:		DEBURR AND BREAK SHARP EDGES			
NAME		SIGNATURE		DATE		REVISIONS		PART NO. / PRODUCT	
DRAWN Ben H				2/07/21				<p>125 85.402.091</p> <p>Assembled Kit</p>	
CHKD									
APPV'D									
MFG									
Q.A.				MATERIAL:				DESCRIPTION	
								Hose reel kit hose path diagram	
								-	
				WEIGHT:				SCALE:1:6	
								SHEET 4 OF 6	

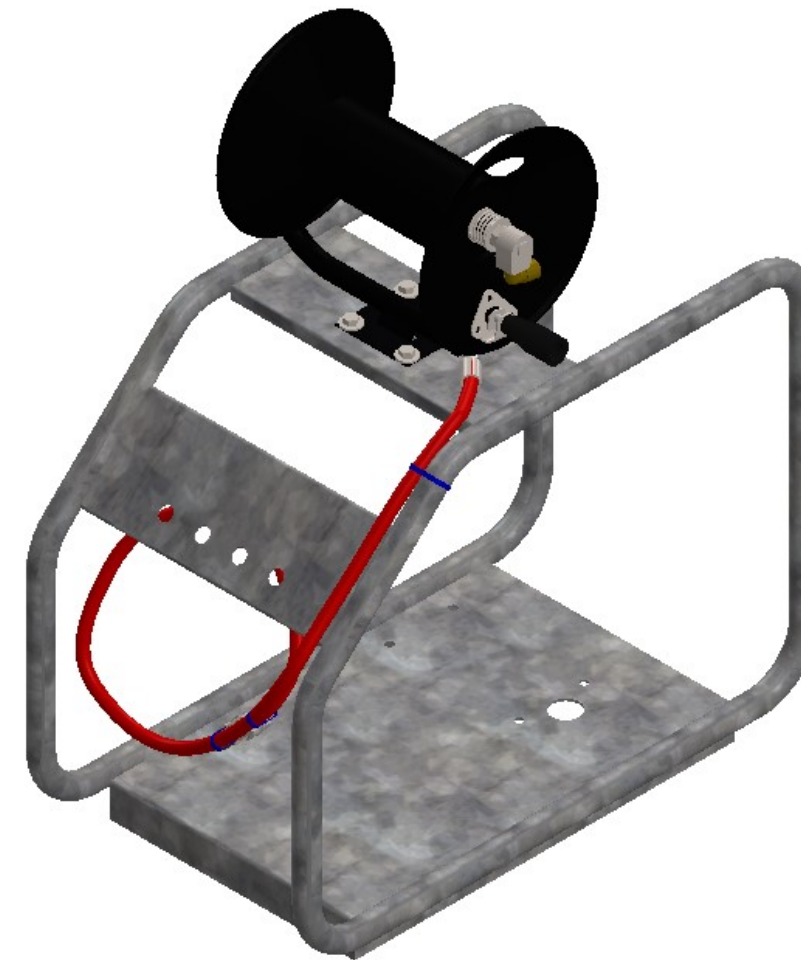
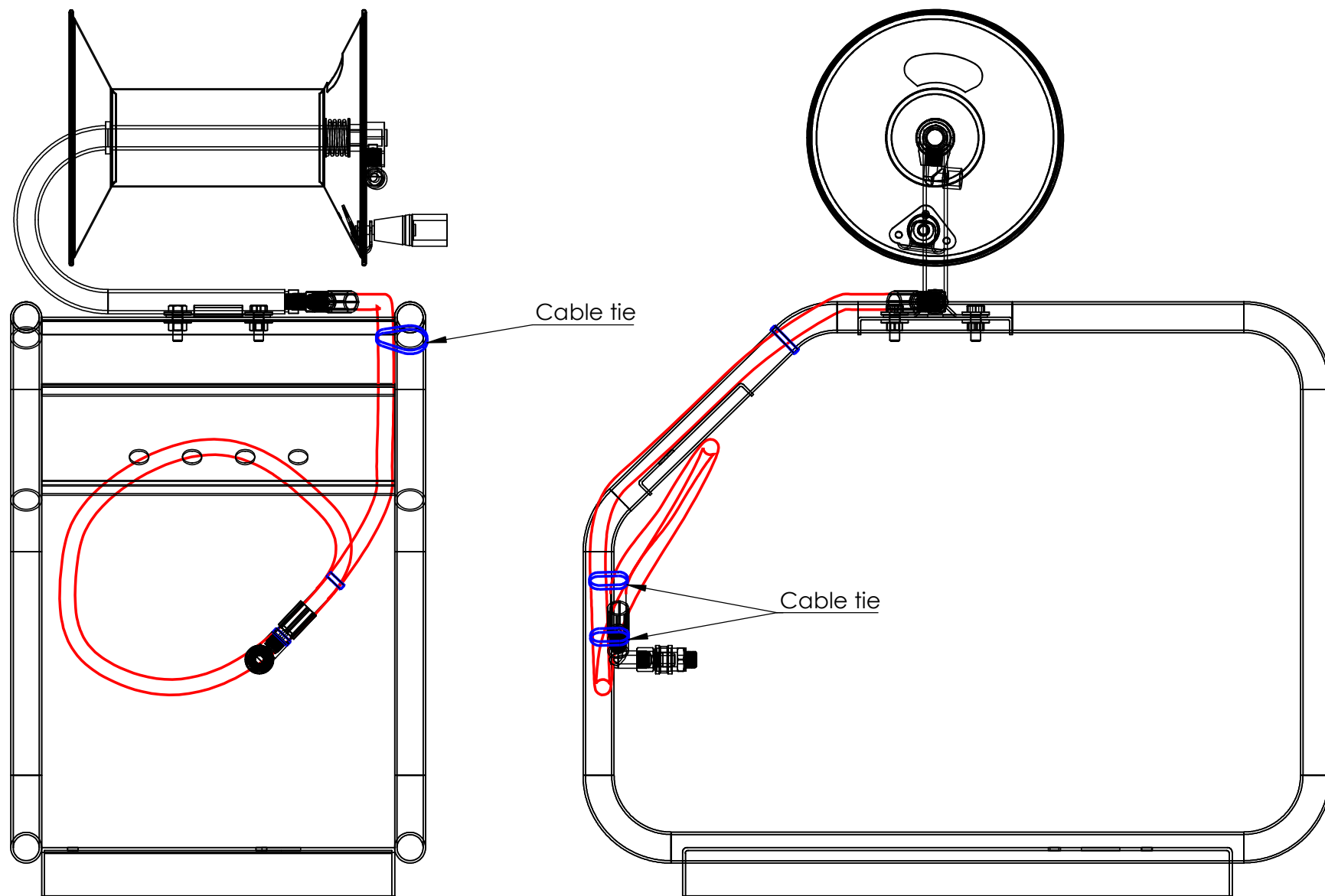





\* See figure for Link hose path

ITEM NO.	PART NUMBER	DESCRIPTION	QTY.
1	J-Frame		1
2	125 85.402.000	Hose Reel	1
	147 24.0277 90d M-F Elbow		1
3	145 26.2015.61	QC Male - 3/8 Female	1
4	147 24.0277	Male - Female 90degree Elbow	2
5	145 26.2010.00	3/8 Male - QC Female	1
6	145 26.2023.61	Preattached to hose	1
7	S84-0606	Male - Female 45degree Elbow	1
8	Outlet Hose		1
9	M10 x 1.5 x 30 Bolt		4
10	10mm Flat washer		8
11	M10 x 1.5 Nyloc Nut		4
12	145 26.2010.00	Preattached to pump outlet	1
13	PTFE Tape		1
14	Cable Tie		3

UNLESS OTHERWISE SPECIFIED: DIMENSIONS ARE IN MILLIMETERS SURFACE FINISH: TOLERANCES: LINEAR: ANGULAR:				FINISH:		DEBURR AND BREAK SHARP EDGES		<div><b>BAR</b> B.A.R. Group P/L</div> <div>125 85.402.090 Assembled Kit</div>		
NAME Ben H		SIGNATURE		DATE 2/07/21		REVISIONS				PART NO. / PRODUCT
DRAWN								DESCRIPTION Hose reel kit exploded mounting diagram		A3
CHK'D										
APPVD										
MFG										
Q.A						MATERIAL:				
						WEIGHT:		SCALE:1:5		SHEET 5 OF 6



Suggested Hose path highlighted red  
Cable tie placement represented by blue bands

UNLESS OTHERWISE SPECIFIED: DIMENSIONS ARE IN MILLIMETERS SURFACE FINISH: TOLERANCES: LINEAR: ANGULAR:				FINISH:		DEBURR AND BREAK SHARP EDGES			
	NAME	SIGNATURE	DATE		REVISIONS			PART NO. / PRODUCT	
DRAWN	Ben H		2/07/21					125 85.402.090 Assembled Kit	
CHK'D									
APPV'D									
MFG									
Q.A				MATERIAL:				DESCRIPTION	
								Hose reel kit hose path diagram	
								A3	
				WEIGHT:				SCALE:1:6	
								SHEET 6 OF 6	