



PARTS BREAKDOWN PRESSURE WASHER

MODEL:HOT5027P-HER



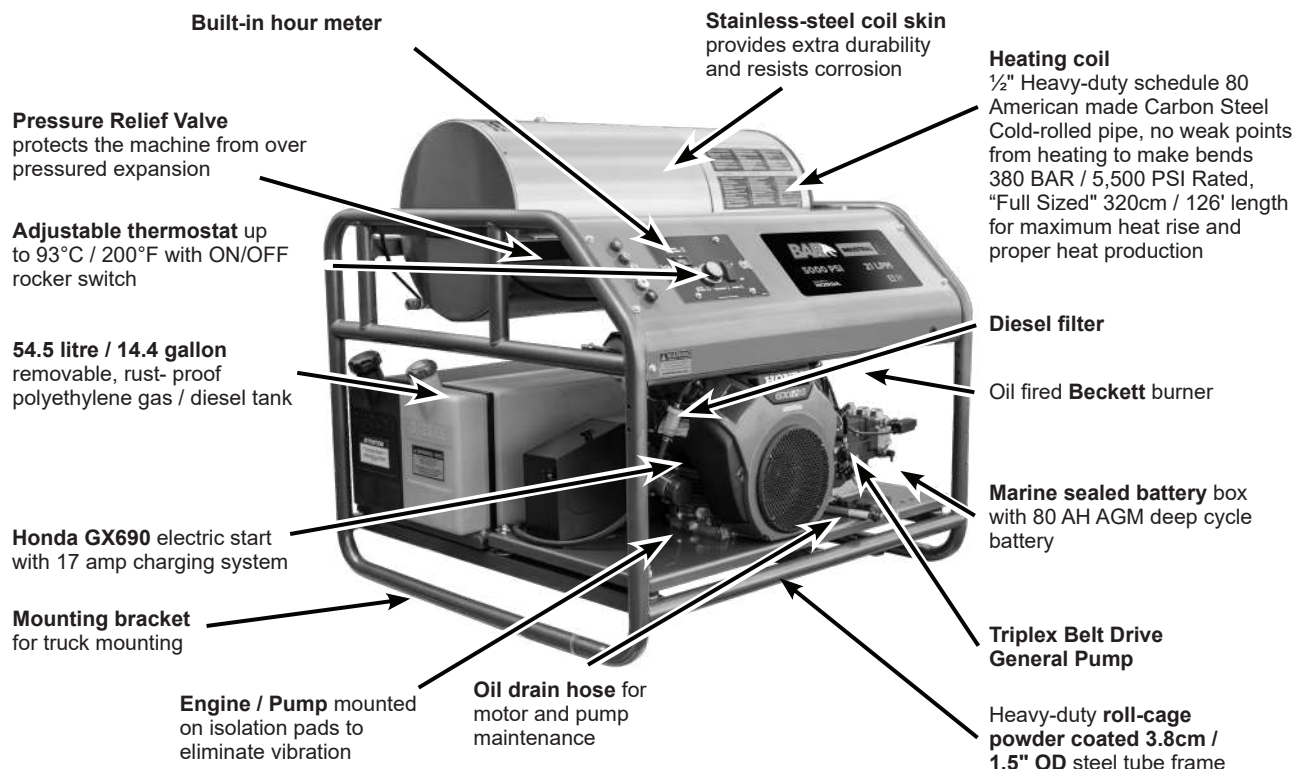
WWW.BARGROUP.COM.AU



PARTS BREAKDOWN PRESSURE WASHER

MODEL: HOT5027P-HER

PRODUCT FEATURES & COMPONENTS



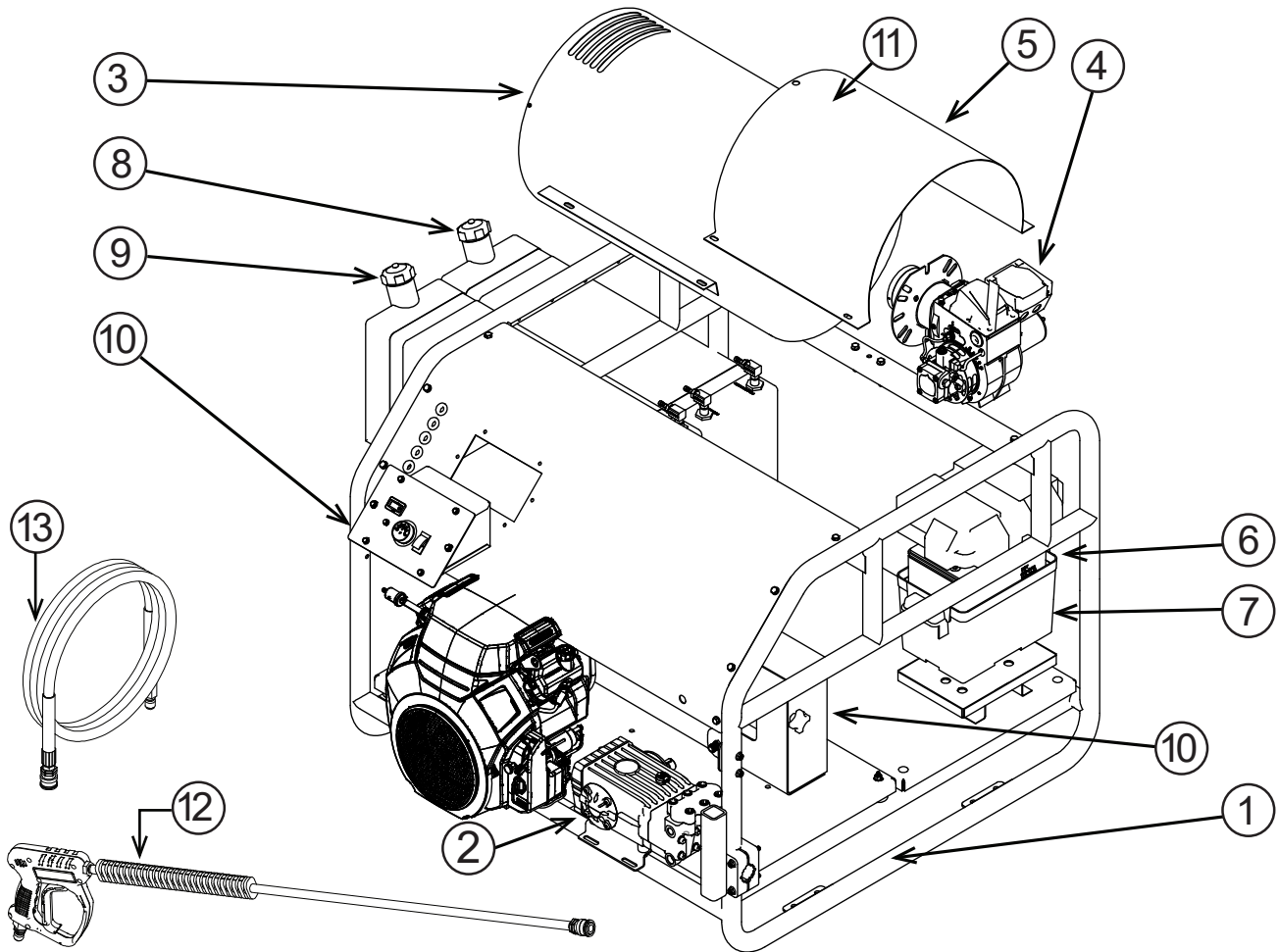
Description	HW3024HG12V
Pressure Rating	345 BAR / 5,000 PSI
GPM	20.8 LPM / 5.5 GPM
Engine Model	HONDA GX690
Displacement	688 CC
Voltage	12VDC
Amps	17
Burner Type	ADC Beckett
Unloader	VHP39
Pump Type	COMET TW5050S
Nozzles Included	0°, 15°, 25°, 40°, Soaper
Hose length	15M / 50'
Start Type	Electric Start
Gasoline Capacity	54.5 litres (14.4 U.S. gal)
Diesel Capacity	54.5 litres (14.4 U.S. gal)
Engine Oil Capacity	2.0 litres (2.1 U.S. qts)
Weight	444 kg (979 lbs)
Hose diameter	3/8"
Hose Material	Rubber / Double Wire Braid



PARTS BREAKDOWN

PRESSURE WASHER

MODEL: HOT5027P-HER



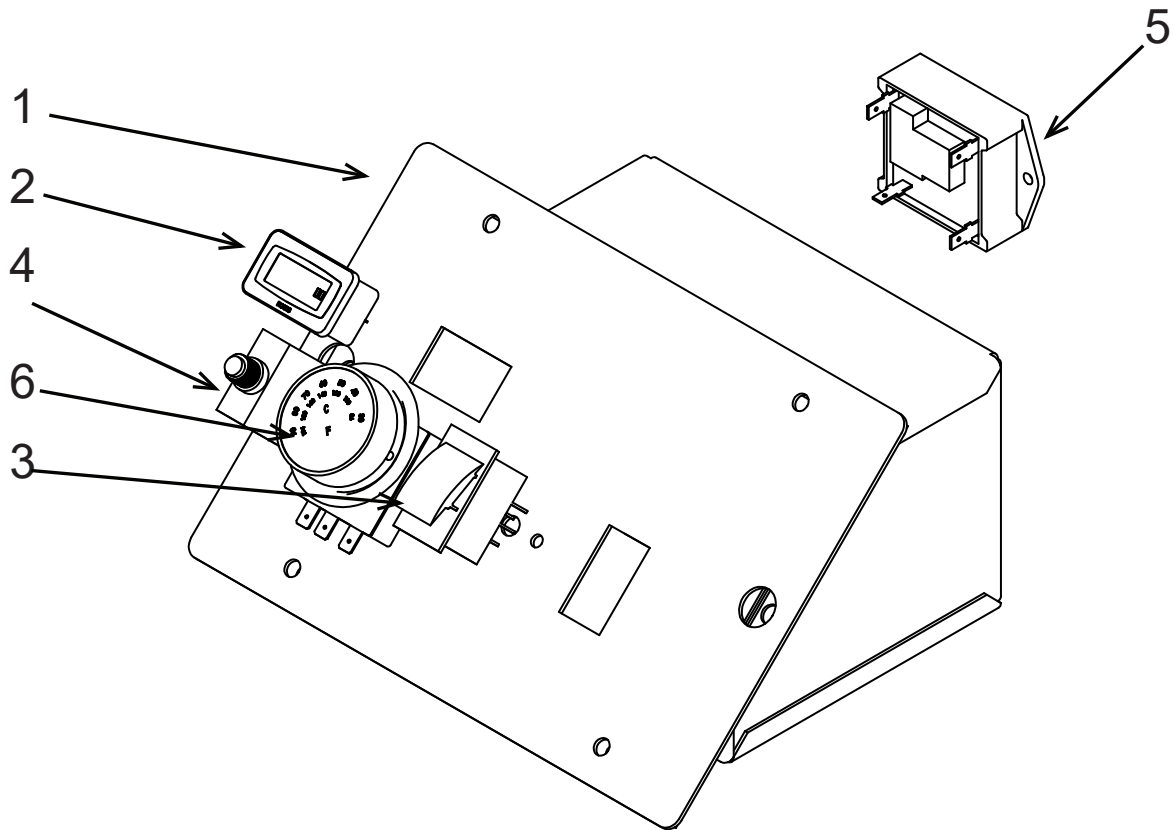
PART #	PART #	DESCRIPTION	QTY.	PART #	DESCRIPTION	QTY.
1	85.600.221BK	FRAME ASSEMBLY	1	85.300.038	UNLOADER, VHPT39, 390 BAR / 5650 PSI	1
2	85.149.059	COMET PUMP TW5050S W/GAUGE	1	85.300.083	PRESSURE SWITCH	1
3	59.000.200	COIL, HOT WASH 5.6GPM (3524HG12V)	1	59.000.101	RUPTURE DISK	1
4	59.110.016	BURNER / (12V ADC SERIES)	1	47.002.045	BELTS 3VX450	4
5	59.000.201	BURNER HOOD; HOT WASH	1	59.000.104	FUEL FILTER	2
6	85.603.101	BATTERY BOX FOR SKID HW	1	85.550.063	ENGINE AIR FILTER	1
7	85.603.100	BATTERY, AGM, 12V, 80AH	1	85.550.064	ENGINE OIL FILTER	1
8	85.601.040	54.5 LITRE / 14.4 GALLONS DIESEL FUEL TANK	1	85.550.065	ENGINE DIP STICK	1
9	85.601.041	54.5 LITRE / 14.4 GASOLINE FUEL TANK	1	85.550.066	ENGINE SPARK PLUG	2
10	85.602.222	BELT GUARD	1	85.310.000	PRESSURE GAUGE	1
11	59.000.008	INSULATION	1	85.550.008L	MUFFLER	1
12	85.205.066H	GUN	1			
13	85.238.251	HOSE	1			



PARTS BREAKDOWN PRESSURE WASHER

MODEL:HOT5027P-HER

CONTROL PANEL BOX



ITEM NO.	PART NUMBER	DESCRIPTION	QTY.
1	85.600.231	BURNER CONTROL BOX	1
2	59.000.206	HOUR METER	1
3	59.000.103	TOGGLE ON/OFF SWITCH FOR 12V BURNER (ADC SERIES)	1
4	85.504.026	PUSH TO RESET 25A CIRCUIT BREAKER (12V)	1
5	59.000.102	LOW VOLTAGE RELAY (12V)	1
6	85.400.071	THERMOSTAT	1



PARTS BREAKDOWN PRESSURE WASHER

MODEL:HOT5027P-HER

ADC Beckett Burner

59.110.016 Complete Assembly

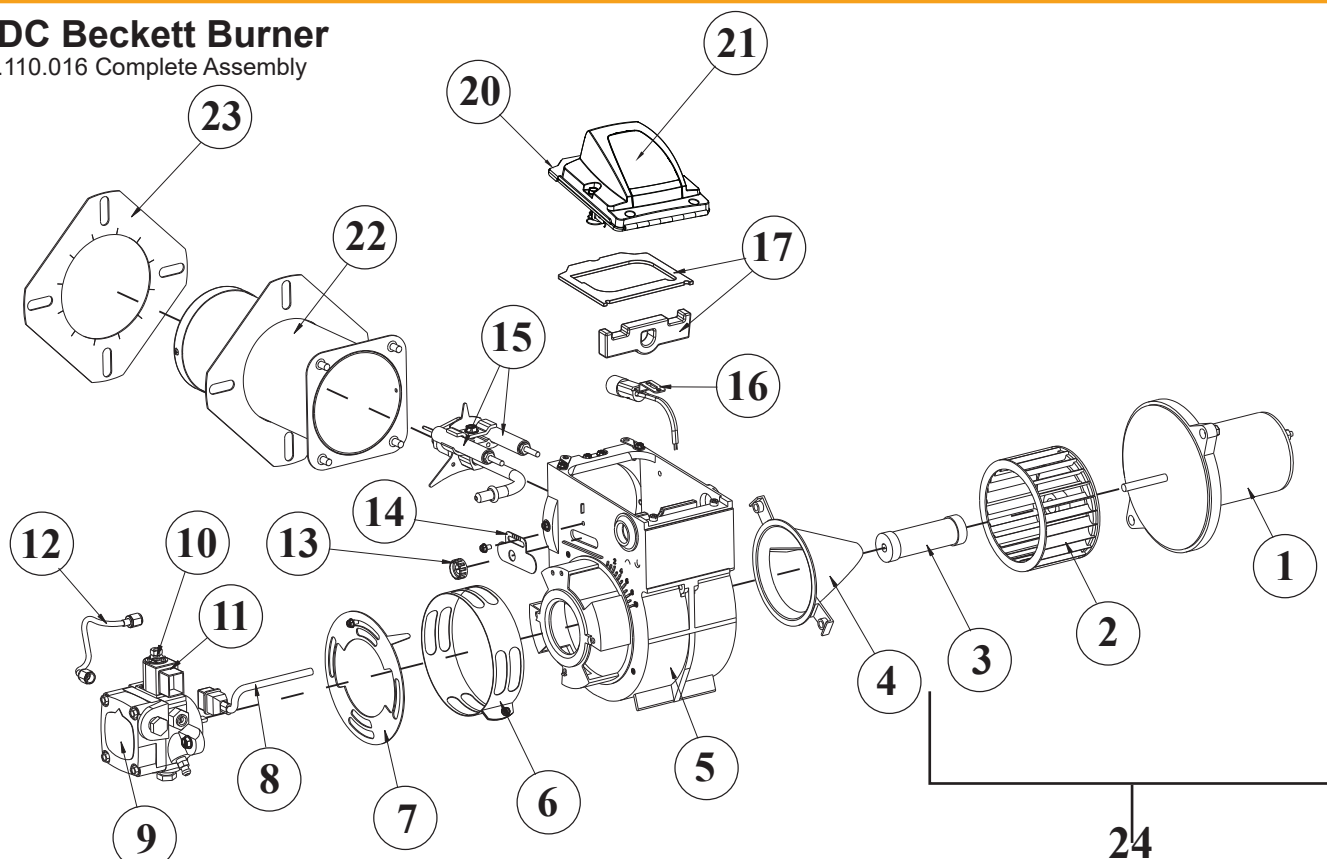


Illustration #	Description
1	DC Motor
2	Blower Wheel
3	Coupling
4	Air Guide
5	Burner Housing - Black
6	Air Band
7	Air Shutter - 4 Slot Air Shutter - 8 Slot
8	Cord set
9	Pump (CleanCut)
10	Valve Stem
11	12 Volt Coil
12	8" Copper Tubing
13	Escutcheon Plate Spline Nut
14	Escutcheon Plate
15	Electrode Kit over 3-5/8"
16	Cad Cell Detector
17	Igniter Gasket Kit

Illustration #	Description
20	Igniter Assy with baseplate
21	Igniter only
22	Air Tube Assembly
23	Flange Mounting Gasket
24	Motor Kit with Blower Wheel and Coupling
Not Shown	Tune-up Kit for 30 & 35 Air Tube Lengths

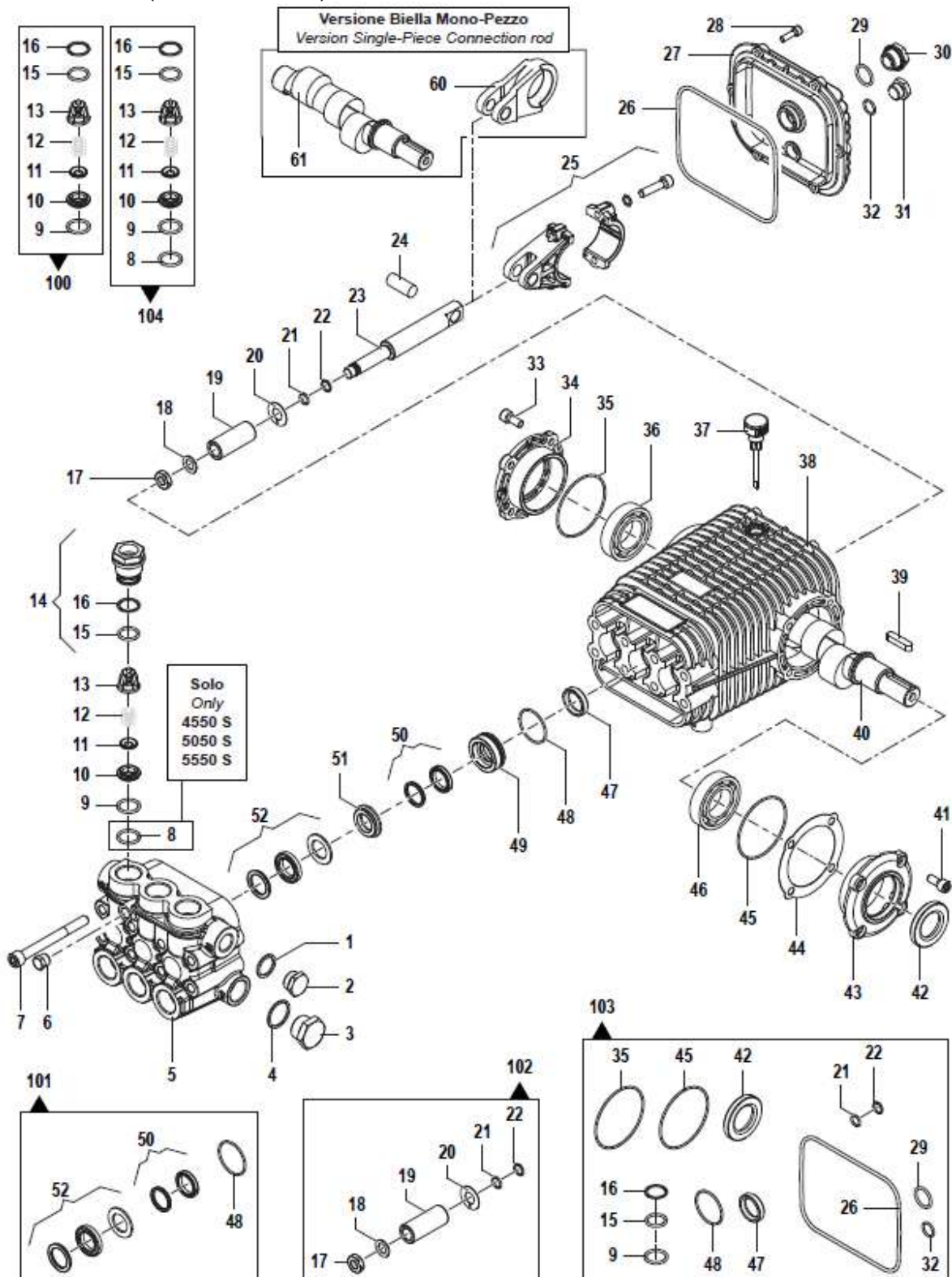
Illustration #	PART #	Description
9	59.110.000	Fuel Pump
8,10,11	59.110.001	Fuel Solenoid
15	59.110.002	Electrode Assy
21	59.110.003	Igniter
1	59.110.004	Blower Motor
3	59.110.005	Shaft Coupling



PARTS BREAKDOWN PRESSURE WASHER

MODEL: HOT5027P-HER

COMET TW5050S (PARTS TO FOLLOW)





PARTS BREAKDOWN

PRESSURE WASHER

MODEL: HOT5027P-HER

N°	Cod.	Descrizione	Description	Note	Qty	Model
1	2811 0084	Rondella	Washer	Ø1,7x22x1,5 Allum	1	4050 S - 4550 S 5050 S - 5550 S
	2811 0086	Rondella	Washer	Ø21,2x27x1,5	1	7036 S - 8030 S 8036 S - 8040 S 8044 S - 10025 S 11025 S - 13022 S 14022 S
2	3200 0007	Tappo	Plug	G3/8"	1	4050 S - 4550 S 5050 S - 5550 S
	3202 0015	Tappo	Plug	G1/2"	1	7036 S - 8030 S 8036 S - 8040 S 8044 S - 10025 S 11025 S - 13022 S 14022 S
3	3202 0015	Tappo	Plug	G1/2"	1	4050 S - 4550 S 5050 S - 5550 S
	3202 0115	Tappo	Plug	G3/4"	1	7036 S - 8030 S 8036 S - 8040 S 8044 S - 10025 S 11025 S - 13022 S 14022 S
4	2811 0086	Rondella	Washer	Ø21,2x27x1,5	1	4050 S - 4550 S 5050 S - 5550 S
	2811 0079	Rondella	Washer	Ø21,7x25x1,5	1	7036 S - 8030 S 8036 S - 8040 S 8044 S - 10025 S 11025 S - 13022 S 14022 S
5	3218 0346	Testata Pompa	Pump Manifold	Ø18	1	4050 S - 4550 S 5050 S - 5550 S
	3218 0346	Testata Pompa	Pump Manifold	Ø22	1	7036 S - 8030 S 8036 S - 8040 S 8044 S
	3218 0343	Testata Pompa	Pump Manifold	Ø25	1	10025 S - 11025 S
	3218 0514	Testata Pompa	Pump Manifold	Ø28	1	13022 S - 14022 S
6	3200 0004	Tappo	Plug	G1/4"	1	
7	3609 0179	Vite	Screw	M10x100	8	
8	0009 0299	Anello BK	Anti-Extr. Ring		6	Solo / Only 4550 S - 4550 S 5050 S - 5550 S
9	1210 0053	Guarnizione OR	O-Ring	Ø2,62x15,08	6	4050 S - 4550 S 5050 S - 5550 S
	1210 0048	Guarnizione OR	O-Ring	Ø2,62x20,54	6	7036 S - 8030 S 8036 S - 8040 S 8044 S - 10025 S 11025 S - 13022 S 14022 S
10	3009 0144	Sede Valvola Aspirazione/Mandata	Suction/Delivery Valve Seat		6	4050 S - 4550 S 5050 S - 5550 S
	3009 0145	Sede Valvola Aspirazione/Mandata	Suction/Delivery Valve Seat		6	7036 S - 8030 S 8036 S - 8040 S 8044 S - 10025 S 11025 S - 13022 S 14022 S
11	3604 0017	Valvola Aspirazione/Mandata	Suction/Delivery Valve		6	4050 S - 4550 S 5050 S - 5550 S
	3604 0032	Valvola Aspirazione/Mandata	Suction/Delivery Valve		6	7036 S - 8030 S 8036 S - 8040 S 8044 S - 10025 S 11025 S - 13022 S 14022 S
12	1802 0177	Molla Valvola Aspirazione/Mandata	Suction/Delivery Valve Spring		6	4050 S - 4550 S 5050 S - 5550 S
	1802 0244	Molla Valvola Aspirazione/Mandata	Suction/Delivery Valve Spring		6	7036 S - 8030 S 8036 S - 8040 S 8044 S - 10025 S 11025 S - 13022 S 14022 S
13	1205 0043	Gabbia Valvola Aspirazione/Mandata	Suction/Delivery Valve Cage		6	4050 S - 4550 S 5050 S - 5550 S
	1205 0038	Gabbia Valvola Aspirazione/Mandata	Suction/Delivery Valve Cage		6	7036 S - 8030 S 8036 S - 8040 S 8044 S - 10025 S 11025 S - 13022 S 14022 S
14	3202 0316	Kit Tappo + OR e Anello	Valve Plug Kit + OR and Ring	>250 bar - 3600psi	6	4050 S - 4550 S 5050 S - 5550 S
	3202 0446	Kit Tappo + OR e Anello	Valve Plug Kit + OR and Ring		6	8044 S
	3202 0317	Kit Tappo + OR e Anello	Valve Plug Kit + OR and Ring	<250 bar - 3600psi	6	7036 S - 8030 S 8036 S - 8040 S 10025 S - 11025 S 13022 S - 14022 S

N°	Cod.	Descrizione	Description	Note	Qty	Model
15	1210 0021	Guarnizione OR	O-Ring	Ø2,62x15,54	6	4050 S - 4550 S 5050 S - 5550 S
	1210 0671	Guarnizione OR	O-Ring	Ø2,62x18,72	6	8044 S
	1210 0048	Guarnizione OR	O-Ring	Ø2,62x20,54	6	7036 S - 8030 S 8036 S - 8040 S 10025 S - 11025 S 13022 S - 14022 S
16	0009 0299	Anello BK	Anti-Extr. Ring		6	4050 S - 4550 S 5050 S - 5550 S
	0009 0290	Anello BK	Anti-Extr. Ring		6	7036 S - 8030 S 8036 S - 8040 S 8044 S - 10025 S 11025 S - 13022 S 14022 S
17	0600 0054	Dado Speciale	Special Bolt		3	4050 S - 4550 S 5050 S - 5550 S
	0600 0062	Dado Speciale	Special Bolt		3	7036 S - 8030 S 8036 S - 8040 S 8044 S - 10025 S 11025 S - 13022 S 14022 S
18	2811 0082	Rondella	Washer	Ø8,4x16x1,5	3	4050 S - 4550 S 5050 S - 5550 S
	2811 0123	Rondella	Washer	Ø12x20x1,5	3	7036 S - 8030 S 8036 S - 8040 S 8044 S - 10025 S 11025 S - 13022 S 14022 S
19	0202 0042	Bussola Ceramica	Ceramic Bushing	Ø18	3	4050 S - 4550 S 5050 S - 5550 S
	0202 0043	Bussola Ceramica	Ceramic Bushing	Ø22	3	7036 S - 8030 S 8036 S - 8040 S 8044 S
	0202 0044	Bussola Ceramica	Ceramic Bushing	Ø25	3	10025 S - 11025 S
	0202 0150	Bussola Ceramica	Ceramic Bushing	Ø28	3	13022 S - 14022 S
20	2812 0094	Rondella	Washer		3	4050 S - 4550 S 5050 S - 5550 S
	2812 0083	Rondella	Washer		3	7036 S - 8030 S 8036 S - 8040 S 8044 S - 10025 S 11025 S - 13022 S 14022 S
21	1210 0727	Guarnizione OR	O-Ring	Ø1,78x7,66	3	4050 S - 4550 S 5050 S - 5550 S
	1210 0170	Guarnizione OR	O-Ring	Ø1,78x10,82	3	7036 S - 8030 S 8036 S - 8040 S 8044 S - 10025 S 11025 S - 13022 S 14022 S
22	0009 0270	Anello BK	Anti-Extr. Ring		3	4050 S - 4550 S 5050 S - 5550 S
	0009 0225	Anello BK	Anti-Extr. Ring		3	7036 S - 8030 S 8036 S - 8040 S 8044 S - 10025 S 11025 S - 13022 S 14022 S
23	2409 0209	Pistone Guida	Piston		3	4050 S - 4550 S 5050 S - 5550 S
	2409 0111	Pistone Guida	Piston		3	7036 S - 8030 S 8036 S - 8040 S 8044 S - 10025 S 11025 S - 13022 S 14022 S
24	3011 0026	Spinotto	Gudgeon Pin	Ø14x36	3	
25	0205 0080	Kit Biella	Connecting Rod Kit		3	
26	1210 0348	Guarnizione OR	O-Ring	Ø3,53x142,5	1	
27	0402 0269	Coperchio Carter	Cover		1	
28	3609 0032	Vite	Screw	M6x20	6	
29	1210 0048	Guarnizione OR	O-Ring	Ø2,62x20,54	1	
30	3201 0027	Tappo	Plug	G1/2"	1	
31	3200 0007	Tappo	Plug	G3/8"	1	
32	1210 0440	Guarnizione OR	O-Ring	Ø2x14	1	
33	3609 0257	Vite	Screw	M16x18	4	
34	3009 0296	Flangia	Flange		1	
35	1210 0448	Guarnizione OR	O-Ring	Ø2x70	1	
36	0440 0028	Cuscinetto Rulli Carici	Roller Bearing	Ø30x62x25	1	
37	3200 0075	Tappo Olio	Oil Dipstick		1	
38	0403 0295	Carter Pompa	Pump Crankcase		1	
39	1602 0065	Linguetta	Key	8x7x35	1	Solo / Only 8040 S
	1602 0073	Linguetta	Key	8x7x53	1	



PARTS BREAKDOWN

PRESSURE WASHER

MODEL:HOT5027P-HER

N°	Cod.	Descrizione	Description	Note	Qty	Model
40	0000 0925	Albero Passante	Throughshaft	Ø24 mm	1	4050 S
	0000 0943	Albero Passante	Throughshaft	Ø24 mm	1	4550 S - 5050 S 5550 S
	0000 0679	Albero Passante	Throughshaft	Ø24 mm	1	5550 S - 8030 S 8036 S - 11025 S 14022 S
	0000 0913	Albero Passante	Throughshaft	Ø24 mm	1	8044 S
	0001 0944	Albero Passante	Throughshaft	Ø24 mm	1	5250 S - 10025 S 13022 S
41	3609 0157	Vite	Screw	M8x18	4	
42	0039 0032	Anello Tenuta	Oil Seal	Ø30x52x7	1	
43	1009 0195	Flangia	Flange		1	
44	0600 0304	Distanziale	Spacer	sp. 0,05	1	
	0600 0305	Distanziale	Spacer	sp. 0,1	1	
	0600 0306	Distanziale	Spacer	sp. 0,19	1	
	0600 0307	Distanziale	Spacer	sp. 0,25	1	
45	1210 0448	Guarnizione OR	O-Ring	Ø2x70	1	
46	0440 0028	Cuscinetto Rulli Conici	Roller Bearing	Ø30x62x25	1	
47	0039 0122	Anello Tenuta	Oil Seal	Ø22x32x7	3	
48	1210 0547	Guarnizione OR	O-Ring	Ø2x37	3	
49	0009 0285	Anello Portaguarnizione	Packing Retainer	Ø18	3	4050 S - 4550 S 5050 S - 5550 S
	0009 0283	Anello Portaguarnizione	Packing Retainer	Ø22	3	7036 S - 8030 S 8036 S - 8040 S 8044 S
	0009 0287	Anello Portaguarnizione	Packing Retainer	Ø25	3	10025 S - 11025 S
	0009 0812	Anello Portaguarnizione	Packing Retainer	Ø28	3	13022 S - 14022 S
50	1241 0074	Guarnizione Tenuta	Packing	Ø18	3	4050 S - 4550 S 5050 S - 5550 S
	1241 0076	Guarnizione Tenuta	Packing	Ø22	3	7036 S - 8030 S 8036 S - 8040 S 8044 S
	1241 0078	Guarnizione Tenuta	Packing	Ø25	3	10025 S - 11025 S
	1241 0076	Guarnizione Tenuta	Packing	Ø28	3	13022 S - 14022 S
51	0009 0284	Anello Portaguarnizione	Packing Retainer	Ø18	3	4050 S - 4550 S 5050 S - 5550 S
	0009 0282	Anello Portaguarnizione	Packing Retainer	Ø22	3	7036 S - 8030 S 8036 S - 8040 S 8044 S
	0009 0286	Anello Portaguarnizione	Packing Retainer	Ø25	3	10025 S - 11025 S
	0009 0811	Anello Portaguarnizione	Packing Retainer	Ø28	3	13022 S - 14022 S
52	1241 0073	Guarnizione Tenuta	Packing	Ø18	3	4050 S - 4550 S 5050 S - 5550 S
	1241 0075	Guarnizione Tenuta	Packing	Ø22	3	7036 S - 8030 S 8036 S - 8040 S
	1241 0084	Guarnizione Tenuta	Packing	Ø22	3	8044 S
	1241 0077	Guarnizione Tenuta	Packing	Ø25	3	10025 S - 11025 S
	1241 0075	Guarnizione Tenuta	Packing	Ø28	3	13022 S - 14022 S

N°	Cod.	Descrizione	Description	Note	Qty	Model
101	5019 0648	Kit Guarnizioni Acqua	Water Seal Kit	Ø18	1	4050 S - 4550 S 5050 S - 5550 S
	5019 0646	Kit Guarnizioni Acqua	Water Seal Kit	Ø22	1	7036 S - 8030 S 8036 S - 8040 S
	5019 0299	Kit Guarnizioni Acqua	Water Seal Kit	Ø22	1	8044 S
	5019 0647	Kit Guarnizioni Acqua	Water Seal Kit	Ø25	1	10025 S - 11025 S
	5019 0294	Kit Guarnizioni Acqua	Water Seal Kit	Ø28	1	13022 S - 14022 S
102	2409 0116	Kit Pistone	Piston Kit	Ø18	1	4050 S - 4550 S 5050 S - 5550 S
	2409 0114	Kit Pistone	Piston Kit	Ø22	1	7036 S - 8030 S 8036 S - 8040 S
	2409 0115	Kit Pistone	Piston Kit	Ø25	1	10025 S - 11025 S
	2409 0292	Kit Pistone	Piston Kit	Ø28	1	13022 S - 14022 S
103	5019 0678	Kit Guarnizioni Olio	Oil Seal Kit	<250 bar - 3600psi	1	7036 S - 8030 S 8036 S - 8040 S 10025 S - 11025 S 13022 S - 14022 S
	5019 0300	Kit Guarnizioni Olio	Oil Seal Kit		1	8044 S
	5019 0649	Kit Guarnizioni Olio	Oil Seal Kit	>250 bar - 3600psi	1	4050 S - 4550 S 5050 S - 5550 S
104	5025 0021	Kit Valvola Asp/ Mandata	Complete Valve Kit	>250 bar - 3600psi	1	4050 S - 4550 S 5050 S - 5550 S

Versione Biella Mono-Pezzo

Version Single-Piece Connection rod

60	0205 0071	Biella	Connecting Rod		3	
61	0000 0498	Albero Passante	Throughshaft	Ø24 mm	1	4050 S - 4550 S 5050 S - 5550 S
	0000 0490	Albero Passante	Throughshaft	Ø24 mm	1	5550 S - 8030 S 8036 S - 11025 S
	0000 0497	Albero Passante	Throughshaft	Ø24 mm	1	5250 S - 10025 S
	0001 0319	Albero Passante	Throughshaft	Ø30 mm	1	8040 S

Kit Ricambi

Spare Parts Kit

100	5025 0020	Kit Valvola Asp/ Mandata	Complete Valve Kit	<250 bar - 3600psi	1	7036 S - 8030 S 8036 S - 8040 S 10025 S - 11025 S 13022 S - 14022 S
	5025 0078	Kit Valvola Asp/ Mandata	Complete Valve Kit		1	8044 S

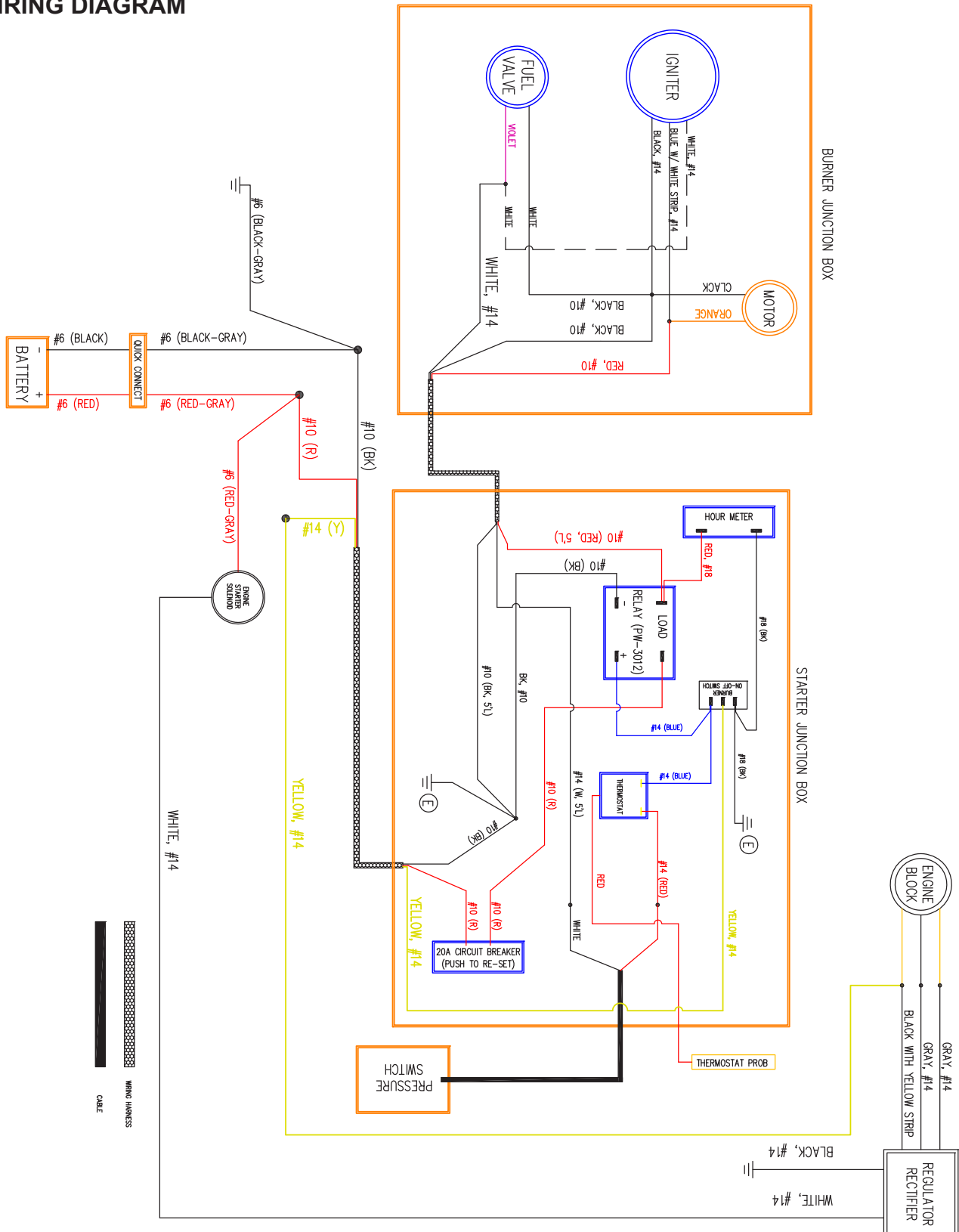


PARTS BREAKDOWN

PRESSURE WASHER

MODEL: HOT5027P-HER

WIRING DIAGRAM





IF YOU NEED ASSISTANCE WITH THE ASSEMBLY OR OPERATION OF
YOUR PRESSURE WASHER, PLEASE CALL 02 4577 2144
OR VISIT OUR WEBSITE:

WWW.BARGROUP.COM.AU